

# ENTHD1 (T-18): sc-86435

## BACKGROUND

Chromosome 22 contains over 500 genes and about 49 million bases. Being the second smallest human chromosome, 22 contains a surprising variety of interesting genes. Phelan-McDermid syndrome, neurofibromatosis type 2 and autism are associated with chromosome 22. A schizophrenia susceptibility locus has been identified on chromosome 22 and studies show that 22q11 deletion symptoms include a high incidence of schizophrenia. Translocations between chromosomes 9 and 22 may lead to the formation of the Philadelphia chromosome and the subsequent production of the novel fusion protein, Bcr-Abl, a potent cell proliferation activator found in several types of leukemia.

## REFERENCES

- Gilbert, F. 1998. Disease genes and chromosomes: disease maps of the human genome. *Chromosome 22. Genet. Test.* 2: 89-97.
- Schwab, S.G. and Wildenauer, D.B. 1999. Chromosome 22 workshop report. *Am. J. Med. Genet.* 88: 276-278.
- Tsilchorozidou, T., et al. 2004. Constitutional rearrangements of chromosome 22 as a cause of neurofibromatosis 2. *J. Med. Genet.* 41: 529-534.
- Arinami, T. 2006. Analyses of the associations between the genes of 22q11 deletion syndrome and schizophrenia. *J. Hum. Genet.* 51: 1037-1045.
- Paylor, R., et al. 2006. TBX1 haploinsufficiency is linked to behavioral disorders in mice and humans: implications for 22q11 deletion syndrome. *Proc. Natl. Acad. Sci. USA* 103: 7729-7734.
- Zheng, X., et al. 2006. Bcr and its mutants, the reciprocal t(9;22)-associated Abl/Bcr fusion proteins, differentially regulate the cytoskeleton and cell motility. *BMC Cancer* 6: 262.
- Ahronowitz, I., et al. 2007. Mutational spectrum of the NF2 gene: a meta-analysis of 12 years of research and diagnostic laboratory findings. *Hum. Mutat.* 28: 1-12.
- Hay, B.N. 2007. Deletion 22q11: spectrum of associated disorders. *Semin. Pediatr. Neurol.* 14: 136-139.

## CHROMOSOMAL LOCATION

Genetic locus: ENTHD1 (human) mapping to 22q13.1.

## SOURCE

ENTHD1 (T-18) is an affinity purified goat polyclonal antibody raised against a peptide mapping within an internal region of ENTHD1 of human origin.

## PRODUCT

Each vial contains 200 µg IgG in 1.0 ml of PBS with < 0.1% sodium azide and 0.1% gelatin.

Blocking peptide available for competition studies, sc-86435 P, (100 µg peptide in 0.5 ml PBS containing < 0.1% sodium azide and 0.2% BSA).

## RESEARCH USE

For research use only, not for use in diagnostic procedures.

## APPLICATIONS

ENTHD1 (T-18) is recommended for detection of ENTHD1 of human origin by Western Blotting (starting dilution 1:200, dilution range 1:100-1:1000), immunoprecipitation [1-2 µg per 100-500 µg of total protein (1 ml of cell lysate)], immunofluorescence (starting dilution 1:50, dilution range 1:50-1:500) and solid phase ELISA (starting dilution 1:30, dilution range 1:30-1:3000).

Suitable for use as control antibody for ENTHD1 siRNA (h): sc-77276, ENTHD1 shRNA Plasmid (h): sc-77276-SH and ENTHD1 shRNA (h) Lentiviral Particles: sc-77276-V.

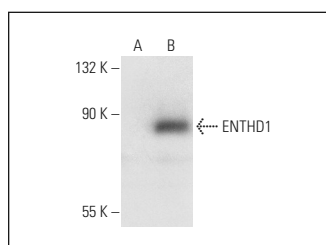
Molecular Weight of ENTHD1: 68 kDa.

Positive Controls: ENTHD1 (h): 293T Lysate: sc-369181.

## RECOMMENDED SECONDARY REAGENTS

To ensure optimal results, the following support (secondary) reagents are recommended: 1) Western Blotting: use donkey anti-goat IgG-HRP: sc-2020 (dilution range: 1:2000-1:100,000) or Cruz Marker™ compatible donkey anti-goat IgG-HRP: sc-2033 (dilution range: 1:2000-1:5000), Cruz Marker™ Molecular Weight Standards: sc-2035, TBS Blotto A Blocking Reagent: sc-2333 and Western Blotting Luminol Reagent: sc-2048. 2) Immunoprecipitation: use Protein A/G PLUS-Agarose: sc-2003 (0.5 ml agarose/2.0 ml). 3) Immunofluorescence: use donkey anti-goat IgG-FITC: sc-2024 (dilution range: 1:100-1:400) or donkey anti-goat IgG-TR: sc-2783 (dilution range: 1:100-1:400) with UltraCruz™ Mounting Medium: sc-24941.

## DATA



ENTHD1 (T-18): sc-86435. Western blot analysis of ENTHD1 expression in non-transfected: sc-117752 (A) and human ENTHD1 transfected: sc-369181 (B) 293T whole cell lysates.

## STORAGE

Store at 4° C, \*\*DO NOT FREEZE\*\*. Stable for one year from the date of shipment. Non-hazardous. No MSDS required.

## PROTOCOLS

See our web site at [www.scbt.com](http://www.scbt.com) or our catalog for detailed protocols and support products.