

Notch 4 (L-16): sc-8645

BACKGROUND

The LIN-12/Notch transmembrane receptors are believed to play a central role in development by regulating cell fate decisions. Four Notch homologs (Notch 1, Notch 2, Notch 3 and Notch 4) have been identified in mammals. The Notch genes are expressed in a variety of embryonic and adult tissues, suggesting that the genes are involved in multiple signaling pathways. Notch proteins have been found to be overexpressed or rearranged in human tumors. Ligands for Notch include Jagged1, Jagged2 and Delta. Jagged1 can activate Notch and prevent myoblast differentiation by inhibiting the expression of muscle regulatory and structural genes. Jagged2 may be involved in tissue development that is dependent upon epithelial-mesenchymal interactions. In addition to its normal expression in the adrenal gland and placenta, Delta expression has also been found in neuroendocrine tumors.

REFERENCES

- Weinmaster, G., et al. 1992. Notch 2: a second mammalian Notch gene. *Development* 116: 931-941.
- Kopan, R., et al. 1993. c. *J. Cell Biol.* 121: 631-641.

CHROMOSOMAL LOCATION

Genetic locus: NOTCH4 (human) mapping to 6p21.32; Notch4 (mouse) mapping to 17 B1.

SOURCE

Notch 4 (L-16) is an affinity purified goat polyclonal antibody raised against a peptide mapping near the N-terminus of Notch 4 of mouse origin.

PRODUCT

Each vial contains 200 µg IgG in 1.0 ml of PBS with < 0.1% sodium azide and 0.1% gelatin.

Blocking peptide available for competition studies, sc-8645 P, (100 µg peptide in 0.5 ml PBS containing < 0.1% sodium azide and 0.2% BSA).

APPLICATIONS

Notch 4 (L-16) is recommended for detection of Notch 4 of mouse, rat and human origin by Western Blotting (starting dilution 1:200, dilution range 1:100-1:1000), immunoprecipitation [1-2 µg per 100-500 µg of total protein (1 ml of cell lysate)], immunofluorescence (starting dilution 1:50, dilution range 1:50-1:500) and solid phase ELISA (starting dilution 1:30, dilution range 1:30-1:3000).

Suitable for use as control antibody for Notch 4 siRNA (h): sc-40137, Notch 4 siRNA (m): sc-40138, Notch 4 shRNA Plasmid (h): sc-40137-SH, Notch 4 shRNA Plasmid (m): sc-40138-SH, Notch 4 shRNA (h) Lentiviral Particles: sc-40137-V and Notch 4 shRNA (m) Lentiviral Particles: sc-40138-V.

Molecular Weight (predicted) of Notch 4 isoforms 1/2/3: 210/61/40 kDa.

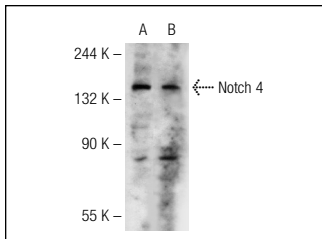
Molecular Weight (observed) of Notch 4: 117-218 kDa.

Positive Controls: Jurkat whole cell lysate: sc-2204, JAR cell lysate: sc-2276 or mouse kidney extract: sc-2255.

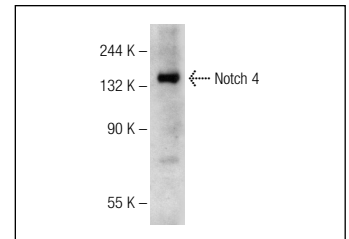
RECOMMENDED SECONDARY REAGENTS

To ensure optimal results, the following support (secondary) reagents are recommended: 1) Western Blotting: use donkey anti-goat IgG-HRP: sc-2020 (dilution range: 1:2000-1:100,000) or Cruz Marker™ compatible donkey anti-goat IgG-HRP: sc-2033 (dilution range: 1:2000-1:5000), Cruz Marker™ Molecular Weight Standards: sc-2035, TBS Blotto A Blocking Reagent: sc-2333 and Western Blotting Luminol Reagent: sc-2048. 2) Immunoprecipitation: use Protein A/G PLUS-Agarose: sc-2003 (0.5 ml agarose/2.0 ml). 3) Immunofluorescence: use donkey anti-goat IgG-FITC: sc-2024 (dilution range: 1:100-1:400) or donkey anti-goat IgG-TR: sc-2783 (dilution range: 1:100-1:400) with UltraCruz™ Mounting Medium: sc-24941.

DATA



Notch 4 (L-16): sc-8645. Western blot analysis of Notch 4 expression in Jurkat (A) and JAR (B) whole cell lysates.



Notch 4 (L-16): sc-8645. Western blot analysis of Notch 4 expression in mouse kidney tissue extract.

SELECT PRODUCT CITATIONS

- Stahl, M., et al. 2008. Roles of POFUT1 and O-fucose in mammalian Notch signaling. *J. Biol. Chem.* 283: 13638-13651.
- Rizzo, P., et al. 2008. Cross-talk between Notch and the estrogen receptor in breast cancer suggests novel therapeutic approaches. *Cancer Res.* 68: 5226-5235.

STORAGE

Store at 4° C, **DO NOT FREEZE**. Stable for one year from the date of shipment. Non-hazardous. No MSDS required.

RESEARCH USE

For research use only, not for use in diagnostic procedures.

PROTOCOLS

See our web site at www.scbt.com or our catalog for detailed protocols and support products.



Try **Notch 4 (A-12): sc-393893** or **Notch 4 (C-3): sc-377399**, our highly recommended monoclonal alternatives to Notch 4 (L-16). Also, for AC, HRP, FITC, PE, Alexa Fluor® 488 and Alexa Fluor® 647 conjugates, see **Notch 4 (A-12): sc-393893**.