

C22orf43 (D-18): sc-86575

BACKGROUND

C22orf43 (chromosome 22 open reading frame 43), also known as MGC33025 or MGC75009, is a 229 amino acid protein encoded by a gene located on human chromosome 22, which contains over 500 genes and about 49 million bases. As the second smallest human chromosome, chromosome 22 contains a wide variety of genes with numerous functions. Phelan-McDermid syndrome, neurofibromatosis type 2 and autism are associated with chromosome 22. A schizophrenia susceptibility locus has been identified on chromosome 22 and studies show that 22q11.23 deletion symptoms include a high incidence of schizophrenia. Translocations between chromosomes 9 and 22 may lead to the formation of the Philadelphia chromosome and the subsequent production of the novel fusion protein, BCR-Abl, a potent cell proliferation activator found in several types of leukemia.

REFERENCES

- Gilbert, F. 1998. Disease genes and chromosomes: disease maps of the human genome. *Chromosome 22. Genet. Test.* 2: 89-97.
- Schwab, S.G., et al. 1999. Chromosome 22 workshop report. *Am. J. Med. Genet.* 88: 276-278.
- Tsilchorozidou, T., et al. 2004. Constitutional rearrangements of chromosome 22 as a cause of neurofibromatosis 2. *J. Med. Genet.* 41: 529-534.
- Arinami, T. 2006. Analyses of the associations between the genes of 22q11 deletion syndrome and schizophrenia. *J. Hum. Genet.* 51: 1037-1045.
- Paylor, R., et al. 2006. Tbx1 haploinsufficiency is linked to behavioral disorders in mice and humans: implications for 22q11 deletion syndrome. *Proc. Natl. Acad. Sci. USA* 103: 7729-7734.
- Zheng, X., et al. 2006. BCR and its mutants, the reciprocal t(9;22)-associated ABL/BCR fusion proteins, differentially regulate the cytoskeleton and cell motility. *BMC Cancer* 6: 262.
- Ahronowitz, I., et al. 2007. Mutational spectrum of the NF2 gene: a meta-analysis of 12 years of research and diagnostic laboratory findings. *Hum. Mutat.* 28: 1-12.
- Hay, B.N. 2007. Deletion 22q11: spectrum of associated disorders. *Semin. Pediatr. Neurol.* 14: 136-139.

CHROMOSOMAL LOCATION

Genetic locus: C22orf43 (human) mapping to 22q11.23.

SOURCE

C22orf43 (D-18) is an affinity purified rabbit polyclonal antibody raised against a peptide mapping within an internal region of C22orf43 of human origin.

PRODUCT

Each vial contains 100 µg IgG in 1.0 ml of PBS with < 0.1% sodium azide and 0.1% gelatin.

Blocking peptide available for competition studies, sc-86575 P, (100 µg peptide in 0.5 ml PBS containing < 0.1% sodium azide and 0.2% BSA).

APPLICATIONS

C22orf43 (D-18) is recommended for detection of C22orf43 of human origin by Western Blotting (starting dilution 1:200, dilution range 1:100-1:1000), immunoprecipitation [1-2 µg per 100-500 µg of total protein (1 ml of cell lysate)], immunofluorescence (starting dilution 1:50, dilution range 1:50-1:500) and solid phase ELISA (starting dilution 1:30, dilution range 1:30-1:3000).

Suitable for use as control antibody for C22orf43 siRNA (h): sc-75497, C22orf43 shRNA Plasmid (h): sc-75497-SH and C22orf43 shRNA (h) Lentiviral Particles: sc-75497-V.

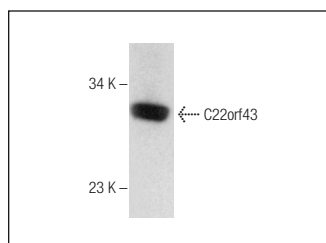
Molecular Weight of C22orf43: 25 kDa.

Positive Controls: Hep G2 cell lysate: sc-2227 or SW480 cell lysate: sc-2219.

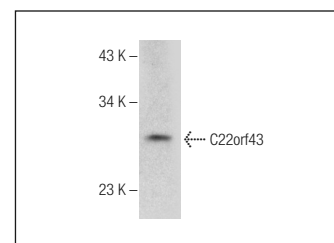
RECOMMENDED SECONDARY REAGENTS

To ensure optimal results, the following support (secondary) reagents are recommended: 1) Western Blotting: use goat anti-rabbit IgG-HRP: sc-2004 (dilution range: 1:2000-1:100,000) or Cruz Marker™ compatible goat anti-rabbit IgG-HRP: sc-2030 (dilution range: 1:2000-1:5000), Cruz Marker™ Molecular Weight Standards: sc-2035, TBS Blotto A Blocking Reagent: sc-2333 and Western Blotting Luminol Reagent: sc-2048. 2) Immunoprecipitation: use Protein A/G PLUS-Agarose: sc-2003 (0.5 ml agarose/2.0 ml). 3) Immunofluorescence: use goat anti-rabbit IgG-FITC: sc-2012 (dilution range: 1:100-1:400) or goat anti-rabbit IgG-TR: sc-2780 (dilution range: 1:100-1:400) with UltraCruz™ Mounting Medium: sc-24941.

DATA



C22orf43 (D-18): sc-86575. Western blot analysis of C22orf43 expression in SW480 whole cell lysate.



C22orf43 (D-18): sc-86575. Western blot analysis of C22orf43 expression in Hep G2 whole cell lysate.

STORAGE

Store at 4° C, ****DO NOT FREEZE****. Stable for one year from the date of shipment. Non-hazardous. No MSDS required.

RESEARCH USE

For research use only, not for use in diagnostic procedures.

PROTOCOLS

See our web site at www.scbt.com or our catalog for detailed protocols and support products.