

LOC729166 (W-14): sc-86654

BACKGROUND

Chromosome 22 contains over 500 genes and about 49 million bases. Being the second smallest human chromosome, 22 contains a surprising variety of interesting genes. Phelan-McDermid syndrome, Neurofibromatosis type 2 and autism are associated with chromosome 22. A schizophrenia susceptibility locus has been identified on chromosome 22 and studies show that 22q11 deletion symptoms include a high incidence of schizophrenia. Translocations between chromosomes 9 and 22 may lead to the formation of the Philadelphia chromosome and the subsequent production of the novel fusion protein, Bcr-Abl, a potent cell proliferation activator found in several types of leukemia. The LOC729166 gene product has been provisionally designated LOC729166 pending further characterization.

REFERENCES

- Gilbert, F. 1998. Disease genes and chromosomes: disease maps of the human genome. *Chromosome 22. Genet. Test.* 2: 89-97.
- Schwab, S.G. and Wildenauer, D.B. 1999. Chromosome 22 workshop report. *Am. J. Med. Genet.* 88: 276-278.
- Tsilchorozidou, T., Menko, F.H., Laloo, F., Kidd, A., De Silva, R., Thomas, H., Smith, P., Malcolmson, A., Dore, J., Madan, K., Brown, A., Yovos, J.G., Tsiligopoulos, M., Vogiatzis, N., Baser, M.E., Wallace, A.J. and Evans, D.G. 2004. Constitutional rearrangements of chromosome 22 as a cause of neurofibromatosis 2. *J. Med. Genet.* 41: 529-534.
- Arinami, T. 2006. Analyses of the associations between the genes of 22q11 deletion syndrome and schizophrenia. *J. Hum. Genet.* 51: 1037-1045.
- Paylor, R., Glaser, B., Mupo, A., Ataliotis, P., Spencer, C., Sobotka, A., Sparks, C., Choi, C.H., Oghalai, J., Curran, S., Murphy, K.C., Monks, S., Williams, N., O'Donovan, M.C., Owen, M.J., Scambler, P.J. and Lindsay, E. 2006. TBX1 haploinsufficiency is linked to behavioral disorders in mice and humans: implications for 22q11 deletion syndrome. *Proc. Natl. Acad. Sci. USA* 103: 7729-7734.
- Zheng, X., Güller, S., Beissert, T., Puccetti, E. and Ruthardt, M. 2006. Bcr and its mutants, the reciprocal t(9;22)-associated Abl/Bcr fusion proteins, differentially regulate the cytoskeleton and cell motility. *BMC Cancer* 6: 262.
- Ahronowitz, I., Xin, W., Kiely, R., Sims, K., MacCollin, M. and Nunes, F.P. 2007. Mutational spectrum of the NF2 gene: a meta-analysis of 12 years of research and diagnostic laboratory findings. *Hum. Mutat.* 28: 1-12.

CHROMOSOMAL LOCATION

Genetic locus: LOC729166 (human) mapping to 22q11.1.

SOURCE

LOC729166 (W-14) is an affinity purified rabbit polyclonal antibody raised against a peptide mapping within an internal region of LOC729166 of human origin.

STORAGE

Store at 4° C, **DO NOT FREEZE**. Stable for one year from the date of shipment. Non-hazardous. No MSDS required.

PRODUCT

Each vial contains 100 µg IgG in 1.0 ml of PBS with < 0.1% sodium azide and 0.1% gelatin.

Blocking peptide available for competition studies, sc-86654 P, (100 µg peptide in 0.5 ml PBS containing < 0.1% sodium azide and 0.2% BSA).

APPLICATIONS

LOC729166 (W-14) is recommended for detection of LOC729166 of human origin by Western Blotting (starting dilution 1:200, dilution range 1:100-1:1000), immunoprecipitation [1-2 µg per 100-500 µg of total protein (1 ml of cell lysate)], immunofluorescence (starting dilution 1:50, dilution range 1:50-1:500) and solid phase ELISA (starting dilution 1:30, dilution range 1:30-1:3000).

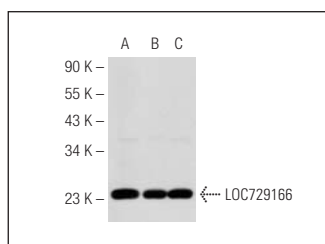
Suitable for use as control antibody for LOC729166 siRNA (h): sc-75622, LOC729166 shRNA Plasmid (h): sc-75622-SH and LOC729166 shRNA (h) Lentiviral Particles: sc-75622-V.

Positive Controls: MES-SA/Dx5 cell lysate: sc-2284, SK-N-MC cell lysate: sc-2237 or HeLa whole cell lysate: sc-2200.

RECOMMENDED SECONDARY REAGENTS

To ensure optimal results, the following support (secondary) reagents are recommended: 1) Western Blotting: use goat anti-rabbit IgG-HRP: sc-2004 (dilution range: 1:2000-1:100,000) or Cruz Marker™ compatible goat anti-rabbit IgG-HRP: sc-2030 (dilution range: 1:2000-1:5000), Cruz Marker™ Molecular Weight Standards: sc-2035, TBS Blotto A Blocking Reagent: sc-2333 and Western Blotting Luminol Reagent: sc-2048. 2) Immunoprecipitation: use Protein A/G PLUS-Agarose: sc-2003 (0.5 ml agarose/2.0 ml). 3) Immunofluorescence: use goat anti-rabbit IgG-FITC: sc-2012 (dilution range: 1:100-1:400) or goat anti-rabbit IgG-TR: sc-2780 (dilution range: 1:100-1:400) with UltraCruz™ Mounting Medium: sc-24941.

DATA



LOC729166 (W-14): sc-86654. Western blot analysis of LOC729166 expression in MES-SA/Dx5 (A), SK-N-MC (B) and HeLa (C) whole cell lysates.

RESEARCH USE

For research use only, not for use in diagnostic procedures.

PROTOCOLS

See our web site at www.scbt.com or our catalog for detailed protocols and support products.