

Nup50 (S-15): sc-86768

BACKGROUND

Nuclear pore complexes (NPCs) are the channels for the bi-directional movement of macromolecules between the nucleus and cytoplasm, and contain more than 100 different subunits. Many of them belong to a family called nucleoporins, which are characterized by the presence of O-linked N-acetylglucosamine moieties and a distinctive pentapeptide repeat (XFXFG). Nup50 (nucleoporin 50), also known as NPAP60 or NPAP60L (nuclear pore-associated protein 60 kDa-like), is a 468 amino acid nuclear protein that functions as a binding site for export receptor-cargo complexes. Localizing to the nucleoplasmic fibrils of the nuclear pore complex, Nup50 associates with various transport receptor proteins including p27. While ubiquitously expressed, Nup50 is found at highest levels in peripheral blood leukocytes, testis and fetal liver, and contains multiple FG repeats in addition to a single RanBD1 domain.

REFERENCES

1. Trichet, V., Shkolny, D., Dunham, I., Beare, D. and McDermid, H.E. 1999. Mapping and complex expression pattern of the human NPAP60L nucleoporin gene. *Cytogenet. Cell Genet.* 85: 221-226.
2. Guan, T., Kehlenbach, R.H., Schirmer, E.C., Kehlenbach, A., Fan, F., Clurman, B.E., Arnheim, N. and Gerace, L. 2000. Nup50, a nucleoplasmically oriented nucleoporin with a role in nuclear protein export. *Mol. Cell. Biol.* 20: 5619-5630.
3. Smitherman, M., Lee, K., Swanger, J., Kapur, R. and Clurman, B.E. 2000. Characterization and targeted disruption of murine Nup50, a p27(Kip1)-interacting component of the nuclear pore complex. *Mol. Cell. Biol.* 20: 5631-5642.
4. Lindsay, M.E., Plafker, K., Smith, A.E., Clurman, B.E. and Macara, I.G. 2002. Npap60/Nup50 is a tri-stable switch that stimulates importin- α : β -mediated nuclear protein import. *Cell* 110: 349-360.
5. Swaminathan, S. and Melchior, F. 2002. Nucleocytoplasmic transport: more than the usual suspects. *Dev. Cell.* 3: 304-306.
6. Online Mendelian Inheritance in Man, OMIM™. 2002. Johns Hopkins University, Baltimore, MD. MIM Number: 604646: World Wide Web URL: <http://www.ncbi.nlm.nih.gov/omim/>
7. Yu, Y., Maggi, L.B., Brady, S.N., Apicelli, A.J., Dai, M.S., Lu, H. and Weber, J.D. 2006. Nucleophosmin is essential for ribosomal protein L5 nuclear export. *Mol. Cell. Biol.* 26: 3798-3809.

CHROMOSOMAL LOCATION

Genetic locus: NUP50 (human) mapping to 22q13.31; Nup50 (mouse) mapping to 15 E2.

SOURCE

Nup50 (S-15) is an affinity purified goat polyclonal antibody raised against a peptide mapping within an internal region of Nup50 of human origin.

RESEARCH USE

For research use only, not for use in diagnostic procedures.

PRODUCT

Each vial contains 200 μ g IgG in 1.0 ml of PBS with < 0.1% sodium azide and 0.1% gelatin.

Blocking peptide available for competition studies, sc-86768 P, (100 μ g peptide in 0.5 ml PBS containing < 0.1% sodium azide and 0.2% BSA).

APPLICATIONS

Nup50 (S-15) is recommended for detection of Nup50 of mouse, rat and human origin by Western Blotting (starting dilution 1:200, dilution range 1:100-1:1000), immunoprecipitation [1-2 μ g per 100-500 μ g of total protein (1 ml of cell lysate)], immunofluorescence (starting dilution 1:50, dilution range 1:50-1:500) and solid phase ELISA (starting dilution 1:30, dilution range 1:30-1:3000); non cross-reactive with other Nup family members.

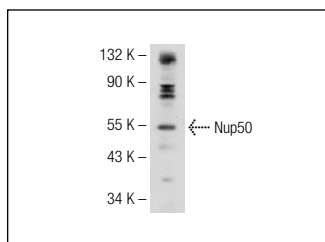
Nup50 (S-15) is also recommended for detection of Nup50 in additional species, including equine, canine, bovine, porcine and avian.

Suitable for use as control antibody for Nup50 siRNA (h): sc-75979, Nup50 siRNA (m): sc-150125, Nup50 shRNA Plasmid (h): sc-75979-SH, Nup50 shRNA Plasmid (m): sc-150125-SH, Nup50 shRNA (h) Lentiviral Particles: sc-75979-V and Nup50 shRNA (m) Lentiviral Particles: sc-150125-V.

Molecular Weight of Nup50: 50 kDa.

Positive Controls: NIH/3T3 nuclear extract: sc-2138.

DATA



Nup50 (S-15): sc-86768. Western blot analysis of Nup50 expression in NIH/3T3 nuclear extract.

STORAGE

Store at 4° C, **DO NOT FREEZE**. Stable for one year from the date of shipment. Non-hazardous. No MSDS required.

PROTOCOLS

See our web site at www.scbt.com or our catalog for detailed protocols and support products.


 MONOS
Satisfaction
Guaranteed

Try **Nup50 (G-4): sc-398993** or **Nup50 (B-6): sc-398992**, our highly recommended monoclonal alternatives to Nup50 (S-15).