

POLR3H (D-19): sc-86797

BACKGROUND

Eukaryotes produce 3 distinct classes of RNA polymerase, Pol I, II and III. Each polymerase is responsible for the synthesis of a different class of RNA. RNA polymerase III (Pol III) transcribes the 5S rRNA genes and all of the tRNA (transfer RNA) genes. POLR3H (DNA-directed RNA polymerase III subunit H), also known as DNA-directed RNA polymerase III subunit RPC8, is a 204 amino acid nuclear protein that is one of the 17 subunits that comprise Pol III. Using the four ribonucleoside triphosphates as substrates, POLR3H catalyzes the transcription of DNA into RNA. A possible Pol III subcomplex is formed via the interaction between POLR3H and CGRP-RCP. There are two isoforms of POLR3H that are produced as a result of alternative splicing events.

REFERENCES

- Willis, I.M. 1993. RNA polymerase III. Genes, factors and transcriptional specificity. *Eur. J. Biochem.* 212: 1-11.
- Buratowski, S. 1994. RNA polymerase III transcription in the yeast *Saccharomyces cerevisiae*. *Genet. Eng.* 16: 1-9.
- Bardeleben, C., et al. 1994. Encounters of *Saccharomyces cerevisiae* RNA polymerase III with its transcription factors during RNA chain elongation. *J. Mol. Biol.* 235: 1193-1205.
- Evans, B.N., et al. 2000. CGRP-RCP, a novel protein required for signal transduction at calcitonin gene-related peptide and adrenomedullin receptors. *J. Biol. Chem.* 275: 31438-31443.
- Hirosawa, M., et al. 2001. Identification of novel transcribed sequences on human chromosome 22 by expressed sequence tag mapping. *DNA Res.* 8: 1-9.
- Hu, P., et al. 2002. Characterization of human RNA polymerase III identifies orthologues for *Saccharomyces cerevisiae* RNA polymerase III subunits. *Mol. Cell. Biol.* 22: 8044-8055.
- Siaut, M., et al. 2003. An Rpb4/Rpb7-like complex in yeast RNA polymerase III contains the orthologue of mammalian CGRP-RCP. *Mol. Cell. Biol.* 23: 195-205.
- Tan, Q., et al. 2003. Loss of the Rpb4/Rpb7 subcomplex in a mutant form of the Rpb6 subunit shared by RNA polymerases I, II, and III. *Mol. Cell. Biol.* 23: 3329-3338.
- Sampath, V. and Sadhale, P. 2005. Rpb4 and Rpb7: a sub-complex integral to multi-subunit RNA polymerases performs a multitude of functions. *IUBMB Life* 57: 93-102.

CHROMOSOMAL LOCATION

Genetic locus: POLR3H (human) mapping to 22q13.2; Polr3h (mouse) mapping to 15 E1.

SOURCE

POLR3H (D-19) is an affinity purified rabbit polyclonal antibody raised against a peptide mapping within an internal region of POLR3H of human origin.

PRODUCT

Each vial contains 100 µg IgG in 1.0 ml of PBS with < 0.1% sodium azide and 0.1% gelatin.

Blocking peptide available for competition studies, sc-86797 P, (100 µg peptide in 0.5 ml PBS containing < 0.1% sodium azide and 0.2% BSA).

APPLICATIONS

POLR3H (D-19) is recommended for detection of POLR3H of mouse, rat and human origin by Western Blotting (starting dilution 1:200, dilution range 1:100-1:1000), immunoprecipitation [1-2 µg per 100-500 µg of total protein (1 ml of cell lysate)], immunofluorescence (starting dilution 1:50, dilution range 1:50-1:500) and solid phase ELISA (starting dilution 1:30, dilution range 1:30-1:3000).

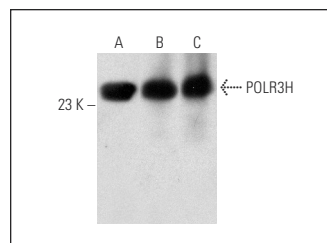
POLR3H (D-19) is also recommended for detection of POLR3H in additional species, including equine, canine, bovine, porcine and avian.

Suitable for use as control antibody for POLR3H siRNA (h): sc-76194, POLR3H siRNA (m): sc-152381, POLR3H shRNA Plasmid (h): sc-76194-SH, POLR3H shRNA Plasmid (m): sc-152381-SH, POLR3H shRNA (h) Lentiviral Particles: sc-76194-V and POLR3H shRNA (m) Lentiviral Particles: sc-152381-V.

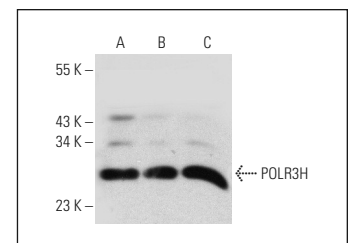
Molecular Weight of POLR3H: 23 kDa.

Positive Controls: mouse liver extract: sc-2256, rat liver extract: sc-2395 or NIH/3T3 whole cell lysate: sc-2210.

DATA



POLR3H (D-19): sc-86797. Western blot analysis of POLR3H expression in NIH/3T3 whole cell lysate (A) and mouse liver (B) and rat liver (C) tissue extracts.



POLR3H (D-19): sc-86797. Western blot analysis of POLR3H expression in SK-MEL-24 (A), SK-MEL-28 (B) and MDA-MB-435S (C) whole cell lysates.

STORAGE

Store at 4° C, **DO NOT FREEZE**. Stable for one year from the date of shipment. Non-hazardous. No MSDS required.

RESEARCH USE

For research use only, not for use in diagnostic procedures.

PROTOCOLS

See our web site at www.scbt.com or our catalog for detailed protocols and support products.