

PRR5 (K-18): sc-86803

BACKGROUND

Proline-rich proteins are often involved in protein-protein interactions and typically act as ligands for SH3, WW and EVH1 domains. PRR5 (proline-rich protein 5), also known as protein observed with Rictor-1 (Protor-1), is a 388 amino acid protein that is a subunit of mammalian target of Rapamycin complex 2 (mTORC2), a multimeric kinase that is involved in the regulation of the actin cytoskeleton and phosphorylates Akt1, SGK and PKC α . Other proteins that make up mTORC2 include Rictor, MAPKAP-1, FRAP and LST8. PRR5 plays an important role in the modulation of platelet-derived growth factor signaling and in the regulation of PDGFR- β expression. Since the gene encoding PRR5 is located in a region that frequently undergoes loss of heterozygosity in breast cancer, it is likely that PRR5 is a tumor suppressor. There are four isoforms of PRR5 that are produced as a result of alternative splicing events.

REFERENCES

- Johnstone, C.N., Castellví-Bel, S., Chang, L.M., Sung, R.K., Bowser, M.J., Pique, J.M., Castells, A. and Rustgi, A.K. 2005. PRR5 encodes a conserved proline-rich protein predominant in kidney: analysis of genomic organization, expression, and mutation status in breast and colorectal carcinomas. *Genomics* 85: 338-351.
- Pearce, L.R., Huang, X., Boudeau, J., Pawłowski, R., Wullschleger, S., Deak, M., Ibrahim, A.F., Gourelay, R., Magnuson, M.A. and Alessi, D.R. 2007. Identification of Protor as a novel Rictor-binding component of mTOR complex-2. *Biochem. J.* 405: 513-522.
- Woo, S.Y., Kim, D.H., Jun, C.B., Kim, Y.M., Haar, E.V., Lee, S.I., Hegg, J.W., Bandhakavi, S., Griffin, T.J. and Kim, D.H. 2007. PRR5, a novel component of mTOR complex 2, regulates platelet-derived growth factor receptor β expression and signaling. *J. Biol. Chem.* 282: 25604-25612.
- Thedieck, K., Polak, P., Kim, M.L., Molle, K.D., Cohen, A., Jenö, P., Arriemerlou, C. and Hall, M.N. 2007. PRAS40 and PRR5-like protein are new mTOR interactors that regulate apoptosis. *PLoS ONE* 2: e1217.
- Nakamichi, N., Kita, M., Niinuma, K., Ito, S., Yamashino, T., Mizoguchi, T. and Mizuno, T. 2007. *Arabidopsis* clock-associated pseudo-response regulators PRR9, PRR7 and PRR5 coordinately and positively regulate flowering time through the canonical CONSTANS-dependent photoperiodic pathway. *Plant Cell Physiol.* 48: 822-832.
- Kawamura, H., Ito, S., Yamashino, T., Niwa, Y., Nakamichi, N. and Mizuno, T. 2008. Characterization of genetic links between two clock-associated genes, GI and PRR5 in the current clock model of *Arabidopsis thaliana*. *Biosci. Biotechnol. Biochem.* 72: 2770-2774.

CHROMOSOMAL LOCATION

Genetic locus: PRR5 (human) mapping to 22q13.31; Prr5 (mouse) mapping to 15 E2.

SOURCE

PRR5 (K-18) is an affinity purified rabbit polyclonal antibody raised against a peptide mapping within an internal region of PRR5 of human origin.

PRODUCT

Each vial contains 100 μ g IgG in 1.0 ml of PBS with < 0.1% sodium azide and 0.1% gelatin.

Blocking peptide available for competition studies, sc-86803 P, (100 μ g peptide in 0.5 ml PBS containing < 0.1% sodium azide and 0.2% BSA).

APPLICATIONS

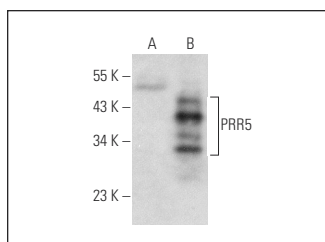
PRR5 (K-18) is recommended for detection of PRR5 of mouse, rat and human origin by Western Blotting (starting dilution 1:200, dilution range 1:100-1:1000), immunoprecipitation [1-2 μ g per 100-500 μ g of total protein (1 ml of cell lysate)], immunofluorescence (starting dilution 1:50, dilution range 1:50-1:500) and solid phase ELISA (starting dilution 1:30, dilution range 1:30-1:3000); non cross-reactive with other PRR5 isoforms.

Suitable for use as control antibody for PRR5 siRNA (h): sc-76261, PRR5 siRNA (m): sc-152512, PRR5 shRNA Plasmid (h): sc-76261-SH, PRR5 shRNA Plasmid (m): sc-152512-SH, PRR5 shRNA (h) Lentiviral Particles: sc-76261-V and PRR5 shRNA (m) Lentiviral Particles: sc-152512-V.

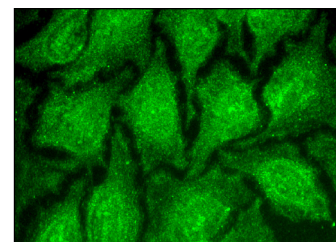
Molecular Weight of PRR5: 33-43 kDa.

Positive Controls: PRR5 (h): 293T Lysate: sc-112138, HeLa whole cell lysate: sc-2200 or Hep G2 cell lysate: sc-2227.

DATA



PRR5 (K-18): sc-86803. Western blot analysis of PRR5 expression in non-transfected: sc-117752 (A) and human PRR5 transfected: sc-112138 (B) 293T whole cell lysates.



PRR5 (K-18): sc-86803. Immunofluorescence staining of methanol-fixed HeLa cells showing membrane localization.

STORAGE

Store at 4° C, ****DO NOT FREEZE****. Stable for one year from the date of shipment. Non-hazardous. No MSDS required.

RESEARCH USE

For research use only, not for use in diagnostic procedures.

MONOS
Satisfaction
Guaranteed

Try **PRR5 (A-7): sc-390469**, our highly recommended monoclonal alternative to PRR5 (K-18).