

# PRR5 (S-14): sc-86804

## BACKGROUND

Proline-rich proteins are often involved in protein-protein interactions and typically act as ligands for SH3, WW and EVH1 domains. PRR5 (proline-rich protein 5), also known as protein observed with Rictor-1 (Protor-1), is a 388 amino acid protein that is a subunit of mammalian target of Rapamycin complex 2 (mTORC2), a multimeric kinase that is involved in the regulation of the actin cytoskeleton and phosphorylates Akt1, SGK and PKC  $\alpha$ . Other proteins that make up mTORC2 include Rictor, MAPKAP-1, FRAP and LST8. PRR5 plays an important role in the modulation of platelet-derived growth factor signaling and in the regulation of PDGFR- $\beta$  expression. Since the gene encoding PRR5 is located in a region that frequently undergoes loss of heterozygosity in breast cancer, it is likely that PRR5 is a tumor suppressor. There are four isoforms of PRR5 that are produced as a result of alternative splicing events.

## CHROMOSOMAL LOCATION

Genetic locus: PRR5 (human) mapping to 22q13.31; Prr5 (mouse) mapping to 15 E2.

## SOURCE

PRR5 (S-14) is an affinity purified rabbit polyclonal antibody raised against a peptide mapping within an internal region of PRR5 of human origin.

## PRODUCT

Each vial contains 100  $\mu$ g IgG in 1.0 ml of PBS with < 0.1% sodium azide and 0.1% gelatin.

Blocking peptide available for competition studies, sc-86804 P, (100  $\mu$ g peptide in 0.5 ml PBS containing < 0.1% sodium azide and 0.2% BSA).

## STORAGE

Store at 4° C, **\*\*DO NOT FREEZE\*\***. Stable for one year from the date of shipment. Non-hazardous. No MSDS required.

## APPLICATIONS

PRR5 (S-14) is recommended for detection of PRR5 of mouse, rat and human origin by Western Blotting (starting dilution 1:200, dilution range 1:100-1:1000), immunoprecipitation [1-2  $\mu$ g per 100-500  $\mu$ g of total protein (1 ml of cell lysate)], immunofluorescence (starting dilution 1:50, dilution range 1:50-1:500) and solid phase ELISA (starting dilution 1:30, dilution range 1:30-1:3000); non cross-reactive with other PRR5 isoforms.

PRR5 (S-14) is also recommended for detection of PRR5 in additional species, including equine, canine, bovine and porcine.

Suitable for use as control antibody for PRR5 siRNA (h): sc-76261, PRR5 siRNA (m): sc-152512, PRR5 shRNA Plasmid (h): sc-76261-SH, PRR5 shRNA Plasmid (m): sc-152512-SH, PRR5 shRNA (h) Lentiviral Particles: sc-76261-V and PRR5 shRNA (m) Lentiviral Particles: sc-152512-V.

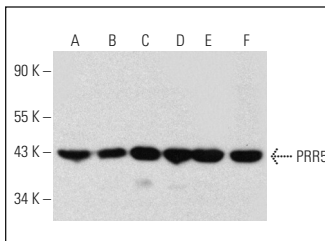
Molecular Weight of PRR5: 33-43 kDa.

Positive Controls: MDA-MB-231 cell lysate: sc-2232, HeLa whole cell lysate: sc-2200 or Hep G2 cell lysate: sc-2227.

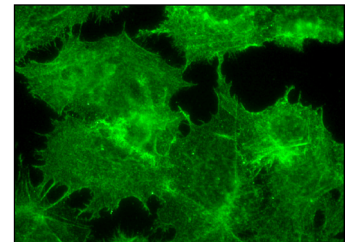
## RECOMMENDED SECONDARY REAGENTS

To ensure optimal results, the following support (secondary) reagents are recommended: 1) Western Blotting: use goat anti-rabbit IgG-HRP: sc-2004 (dilution range: 1:2000-1:100,000) or Cruz Marker™ compatible goat anti-rabbit IgG-HRP: sc-2030 (dilution range: 1:2000-1:5000), Cruz Marker™ Molecular Weight Standards: sc-2035, TBS Blotto A Blocking Reagent: sc-2333 and Western Blotting Luminol Reagent: sc-2048. 2) Immunoprecipitation: use Protein A/G PLUS-Agarose: sc-2003 (0.5 ml agarose/2.0 ml). 3) Immunofluorescence: use goat anti-rabbit IgG-FITC: sc-2012 (dilution range: 1:100-1:400) or goat anti-rabbit IgG-TR: sc-2780 (dilution range: 1:100-1:400) with UltraCruz™ Mounting Medium: sc-24941.

## DATA



PRR5 (S-14): sc-86804. Western blot analysis of PRR5 expression in MCF7 (A), SW480 (B), MDA-MB-231 (C), HeLa (D), HEK293 (E) and Hep G2 (F) whole cell lysates.



PRR5 (S-14): sc-86804. Immunofluorescence staining of formalin-fixed Hep G2 cells showing membrane localization.

## RESEARCH USE

For research use only, not for use in diagnostic procedures.

## PROTOCOLS

See our web site at [www.scbt.com](http://www.scbt.com) or our catalog for detailed protocols and support products.


 MONOS  
Satisfaction  
Guaranteed

Try **PRR5 (A-7): sc-390469**, our highly recommended monoclonal alternative to PRR5 (S-14).