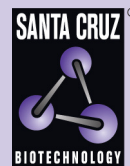


# ZNF279 (C-12): sc-86951



The Power to Question

## BACKGROUND

Zinc-finger proteins contain DNA-binding domains and have a wide variety of functions, most of which encompass some form of transcriptional activation or repression. The majority of zinc-finger proteins contain a Krüppel-type DNA binding domain and a KRAB domain, which is thought to interact with KAP1, thereby recruiting histone modifying proteins. As a member of the krueppel C<sub>2</sub>H<sub>2</sub>-type zinc-finger protein family, ZNF279 (zinc finger protein 279), also known as ZNF280B, SUHW2 and ZNF632, is a 543 amino acid nuclear protein that contains four C<sub>2</sub>H<sub>2</sub>-type zinc fingers and may function as a transcription factor. ZNF279 is encoded by a gene located on human chromosome 22, which houses over 500 genes and is the second smallest human chromosome. Mutations in several of the genes that map to chromosome 22 are involved in the development of Phelan-McDermid syndrome, Neurofibromatosis type 2, autism and schizophrenia.

## REFERENCES

1. Thiesen, H.J. 1990. Multiple genes encoding zinc finger domains are expressed in human T cells. *New Biol.* 2: 363-374.
2. Rosenfeld, R. and Margalit, H. 1993. Zinc fingers: conserved properties that can distinguish between spurious and actual DNA-binding motifs. *J. Biomol. Struct. Dyn.* 11: 557-570.
3. Schwab, S.G. and Wildenauer, D.B. 1999. Chromosome 22 workshop report. *Am. J. Med. Genet.* 88: 276-278.
4. Nishioka, M., Kohno, T., Takahashi, M., Niki, T., Yamada, T., Sone, S. and Yokota, J. 2000. Identification of a 428-kb homozygously deleted region disrupting the SEZ6L gene at 22q12.1 in a lung cancer cell line. *Oncogene* 19: 6251-6260.
5. Edelstein, L.C. and Collins, T. 2005. The SCAN domain family of zinc finger transcription factors. *Gene* 359: 1-17.
6. Hay, B.N. 2007. Deletion 22q11: spectrum of associated disorders. *Semin. Pediatr. Neurol.* 14: 136-139.
7. Liu, J. and Stormo, G.D. 2008. Context-dependent DNA recognition code for C<sub>2</sub>H<sub>2</sub> zinc-finger transcription factors. *Bioinformatics* 24: 1850-1857.

## CHROMOSOMAL LOCATION

Genetic locus: ZNF280B (human) mapping to 22q11.22.

## SOURCE

ZNF279 (C-12) is an affinity purified rabbit polyclonal antibody raised against a peptide mapping near the C-terminus of ZNF279 of human origin.

## STORAGE

Store at 4° C, **\*\*DO NOT FREEZE\*\***. Stable for one year from the date of shipment. Non-hazardous. No MSDS required.

## PROTOCOLS

See our web site at [www.scbt.com](http://www.scbt.com) or our catalog for detailed protocols and support products.

## PRODUCT

Each vial contains 100 µg IgG in 1.0 ml of PBS with < 0.1% sodium azide and 0.1% gelatin.

Blocking peptide available for competition studies, sc-86951 P, (100 µg peptide in 0.5 ml PBS containing < 0.1% sodium azide and 0.2% BSA).

## APPLICATIONS

ZNF279 (C-12) is recommended for detection of ZNF279 of human origin by Western Blotting (starting dilution 1:200, dilution range 1:100-1:1000), immunoprecipitation [1-2 µg per 100-500 µg of total protein (1 ml of cell lysate)], immunofluorescence (starting dilution 1:50, dilution range 1:50-1:500) and solid phase ELISA (starting dilution 1:30, dilution range 1:30-1:3000); non cross-reactive with other ZNF family members.

Suitable for use as control antibody for ZNF279 siRNA (h): sc-76976, ZNF279 shRNA Plasmid (h): sc-76976-SH and ZNF279 shRNA (h) Lentiviral Particles: sc-76976-V.

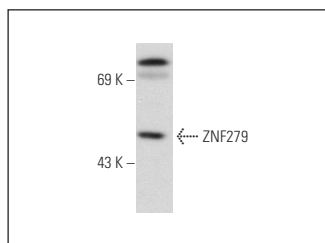
Molecular Weight of ZNF279: 62 kDa.

Positive Controls: HeLa whole cell lysate: sc-2200.

## RECOMMENDED SECONDARY REAGENTS

To ensure optimal results, the following support (secondary) reagents are recommended: 1) Western Blotting: use goat anti-rabbit IgG-HRP: sc-2004 (dilution range: 1:2000-1:100,000) or Cruz Marker™ compatible goat anti-rabbit IgG-HRP: sc-2030 (dilution range: 1:2000-1:5000), Cruz Marker™ Molecular Weight Standards: sc-2035, TBS Blotto A Blocking Reagent: sc-2333 and Western Blotting Luminol Reagent: sc-2048. 2) Immunoprecipitation: use Protein A/G PLUS-Agarose: sc-2003 (0.5 ml agarose/2.0 ml). 3) Immunofluorescence: use goat anti-rabbit IgG-FITC: sc-2012 (dilution range: 1:100-1:400) or goat anti-rabbit IgG-TR: sc-2780 (dilution range: 1:100-1:400) with UltraCruz™ Mounting Medium: sc-24941.

## DATA



ZNF279 (C-12): sc-86951. Western blot analysis of ZNF279 expression in HeLa whole cell lysate.

## RESEARCH USE

For research use only, not for use in diagnostic procedures.