

# ARHGEF10 (I-14): sc-86974

## BACKGROUND

ARHGEF10 (Rho guanine nucleotide exchange factor 10), also known as GEF10 or KIAA0294, is a 1,369 amino acid protein that contains one DBL-homology domain and is thought to play a role in myelination of peripheral nerves, specifically during development. ARHGEF10 is expressed as four alternatively spliced isoforms that are present at low levels in ovary, lung, testis and kidney, with considerably higher expression in the central and peripheral nervous systems. Defects in the gene encoding ARHGEF10 are the cause of slowed nerve conduction velocity (SNCV), an autosomal dominant disorders that is characterized by a reduction in nerve velocities resulting from lack of proper myelination.

## REFERENCES

- Nagase, T., Ishikawa, K., Nakajima, D., Ohira, M., Seki, N., Miyajima, N., Tanaka, A., Kotani, H., Nomura, N. and Ohara, O. 1997. Prediction of the coding sequences of unidentified human genes. VII. The complete sequences of 100 new cDNA clones from brain which can code for large proteins *in vitro*. DNA Res. 4: 141-150.
- Nelis, E., De Jonghe, P., De Vriendt, E., Patel, P.I., Martin, J.J. and Van Broeckhoven, C. 1998. Mutation analysis of the nerve specific promoter of the peripheral myelin protein 22 gene in CMT1 disease and HNPP. J. Med. Genet. 35: 590-593.
- Online Mendelian Inheritance in Man, OMIM™. 2002. Johns Hopkins University, Baltimore, MD. MIM Number: 608136. World Wide Web URL: <http://www.ncbi.nlm.nih.gov/omim/>
- Verhoeven, K., De Jonghe, P., Van de Putte, T., Nelis, E., Zwijsen, A., Verpoorten, N., De Vriendt, E., Jacobs, A., Van Gerwen, V., Francis, A., Ceuterick, C., Huylebroeck, D. and Timmerman, V. 2003. Slowed conduction and thin myelination of peripheral nerves associated with mutant Rho Guanine-nucleotide exchange factor 10. Am. J. Hum. Genet. 73: 926-932.
- Mohl, M., Winkler, S., Wieland, T. and Lutz, S. 2006. Gef10—the third member of a Rho-specific guanine nucleotide exchange factor subfamily with unusual protein architecture. Naunyn Schmiedeberg's Arch. Pharmacol. 373: 333-341.
- Jungerius, B.J., Hoogendoorn, M.L., Bakker, S.C., Van't Slot, R., Bardoel, A.F., Ophoff, R.A., Wijmenga, C., Kahn, R.S. and Sinke, R.J. 2008. An association screen of Myelin-related genes implicates the chromosome 22q11 PIK4CA gene in schizophrenia. Mol. Psychiatry. 13: 1060-1068.

## CHROMOSOMAL LOCATION

Genetic locus: ARHGEF10 (human) mapping to 8p23.3; Arhgef10 (mouse) mapping to 8 A1.1.

## STORAGE

Store at 4° C, \*\*DO NOT FREEZE\*\*. Stable for one year from the date of shipment. Non-hazardous. No MSDS required.

## RESEARCH USE

For research use only, not for use in diagnostic procedures.

## SOURCE

ARHGEF10 (I-14) is an affinity purified goat polyclonal antibody raised against a peptide mapping within an internal region of ARHGEF10 of human origin.

## PRODUCT

Each vial contains 200 µg IgG in 1.0 ml of PBS with < 0.1% sodium azide and 0.1% gelatin.

Blocking peptide available for competition studies, sc-86974 P, (100 µg peptide in 0.5 ml PBS containing < 0.1% sodium azide and 0.2% BSA).

## APPLICATIONS

ARHGEF10 (I-14) is recommended for detection of ARHGEF10 of mouse, rat and human origin by Western Blotting (starting dilution 1:200, dilution range 1:100-1:1000), immunoprecipitation [1-2 µg per 100-500 µg of total protein (1 ml of cell lysate)], immunofluorescence (starting dilution 1:50, dilution range 1:50-1:500) and solid phase ELISA (starting dilution 1:30, dilution range 1:30-1:3000).

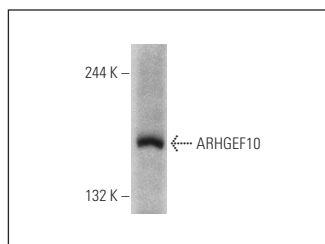
ARHGEF10 (I-14) is also recommended for detection of ARHGEF10 in additional species, including equine, canine, porcine and avian.

Suitable for use as control antibody for ARHGEF10 siRNA (h): sc-77826, ARHGEF10 siRNA (m): sc-141221, ARHGEF10 shRNA Plasmid (h): sc-77826-SH, ARHGEF10 shRNA Plasmid (m): sc-141221-SH, ARHGEF10 shRNA (h) Lentiviral Particles: sc-77826-V and ARHGEF10 shRNA (m) Lentiviral Particles: sc-141221-V.

Molecular Weight of ARHGEF10: 152 kDa.

Positive Controls: HeLa whole cell lysate: sc-2200.

## DATA



ARHGEF10 (I-14): sc-86974. Western blot analysis of ARHGEF10 expression in HeLa whole cell lysate.

## PROTOCOLS

See our web site at [www.scbt.com](http://www.scbt.com) or our catalog for detailed protocols and support products.