

NDUFAF6 (K-13): sc-87001

BACKGROUND

Made up of nearly 146 million bases, chromosome 8 encodes about 800 genes. Translocation of portions of chromosome 8 with amplifications of the c-Myc gene are found in some leukemias and lymphomas, and are typically associated with a poor prognosis. Portions of chromosome 8 have been linked to schizophrenia and bipolar disorder. Trisomy 8, also known as Warkany syndrome 2, most often results in early miscarriage but is occasionally seen in a mosaic form in surviving patients who suffer to a varying degree from a number of symptoms, including retarded mental and motor development, and certain facial and developmental defects. WRN is a DNA helicase encoded by chromosome 8 and shown defective in those with the early aging disorder Werner syndrome. Chromosome 8 is also associated with Pfeiffer syndrome, congenital hypothyroidism and Waardenburg syndrome. The C8orf38 gene product has been implicated as a cause of mitochondrial complex I deficiency (MT-C1D), disorder of the mitochondrial respiratory chain that causes a wide range of clinical disorders.

REFERENCES

1. Robin, N.H., et al. 1994. Linkage of Pfeiffer syndrome to chromosome 8 centromere and evidence for genetic heterogeneity. *Hum. Mol. Genet.* 3: 2153-2158.
2. Zollino, M., et al. 1995. Constitutional trisomy 8 and myelodysplasia: report of a case and review of the literature. *Leuk. Res.* 19: 733-736.
3. Kashino, G., et al. 2001. Preferential expression of an intact WRN gene in Werner syndrome cell lines in which a normal chromosome 8 has been introduced. *Biochem. Biophys. Res. Commun.* 289: 111-115.
4. Selicorni, A., et al. 2002. Cytogenetic mapping of a novel locus for type II Waardenburg syndrome. *Hum. Genet.* 110: 64-67.
5. McQueen, M.B., et al. 2005. Combined analysis from eleven linkage studies of bipolar disorder provides strong evidence of susceptibility loci on chromosomes 6q and 8q. *Am. J. Hum. Genet.* 77: 582-595.
6. Mossafa, H., et al. 2006. Non-Hodgkin's lymphomas with Burkitt-like cells are associated with c-Myc amplification and poor prognosis. *Leuk. Lymphoma* 47: 1885-1893.
7. Nusbaum, C., et al. 2006. DNA sequence and analysis of human chromosome 8. *Nature* 439: 331-335.
8. Agrelo, R., et al. 2006. Epigenetic inactivation of the premature aging Werner syndrome gene in human cancer. *Proc. Natl. Acad. Sci. USA* 103: 8822-8827.
9. Pagliarini, D.J., et al. 2008. A mitochondrial protein compendium elucidates complex I disease biology. *Cell* 134: 112-123.

CHROMOSOMAL LOCATION

Genetic locus: NDUFAF6 (human) mapping to 8q22.1; 2310030N02Rik (mouse) mapping to 4 A1.

SOURCE

NDUFAF6 (K-13) is an affinity purified rabbit polyclonal antibody raised against a peptide mapping near the C-terminus of NDUFAF6 of human origin.

PRODUCT

Each vial contains 100 µg IgG in 1.0 ml of PBS with < 0.1% sodium azide and 0.1% gelatin.

Blocking peptide available for competition studies, sc-87001 P, (100 µg peptide in 0.5 ml PBS containing < 0.1% sodium azide and 0.2% BSA).

APPLICATIONS

NDUFAF6 (K-13) is recommended for detection of NDUFAF6 of human origin, 2310030N02Rik of mouse origin and the corresponding rat homolog by Western Blotting (starting dilution 1:200, dilution range 1:100-1:1000), immunoprecipitation [1-2 µg per 100-500 µg of total protein (1 ml of cell lysate)], immunofluorescence (starting dilution 1:50, dilution range 1:50-1:500) and solid phase ELISA (starting dilution 1:30, dilution range 1:30-1:3000).

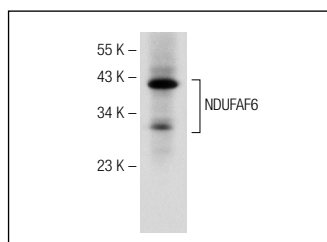
NDUFAF6 (K-13) is also recommended for detection of NDUFAF6 in additional species, including porcine.

Suitable for use as control antibody for NDUFAF6 siRNA (h): sc-77742, 2310030N02Rik siRNA (m): sc-108681, NDUFAF6 shRNA Plasmid (h): sc-77742-SH, 2310030N02Rik shRNA Plasmid (m): sc-108681-SH, NDUFAF6 shRNA (h) Lentiviral Particles: sc-77742-V and 2310030N02Rik shRNA (m) Lentiviral Particles: sc-108681-V.

Molecular Weight of NDUFAF6 isoforms: 38/33/13 kDa.

Positive Controls: Mouse liver extract: sc-2256.

DATA



NDUFAF6 (K-13): sc-87001. Western blot analysis of NDUFAF6 expression in mouse liver tissue extract.

STORAGE

Store at 4° C, ****DO NOT FREEZE****. Stable for one year from the date of shipment. Non-hazardous. No MSDS required.

RESEARCH USE

For research use only, not for use in diagnostic procedures.

PROTOCOLS

See our web site at www.scbt.com or our catalog for detailed protocols and support products.