

copine 3 (F-12): sc-87052

BACKGROUND

Copine 3, also known as CPNE3, CPN3 or COPN3, is a member of the copine family of evolutionarily conserved, soluble, calcium-dependent, membrane-binding proteins. Members of the copine family are involved in signal transduction and membrane trafficking. Copine 3 is ubiquitously expressed and contains two N-terminal C2 domains and one C-terminal VWFA (von Willebrand factor A) domain, which is also referred to as the A domain or the core domain. As is characteristic of the copine family, copine 3 functions in membrane trafficking and is capable of binding phospholipids in a calcium-dependent manner. Differing from other members of the copine family, copine 3 may possess some intrinsic kinase activity. Copine 3 exists as a monomer in the cytosol and undergoes a conformational change upon binding to calcium.

REFERENCES

- Creutz, C.E., Tomsig, J.L., Snyder, S.L., Gautier, M.C., Skouri, F., Beisson, J. and Cohen, J. 1998. The copines, a novel class of C2 domain-containing, calcium-dependent, phospholipid-binding proteins conserved from *Paramecium* to humans. *J. Biol. Chem.* 273: 1393-1402.
- Caudell, E.G., Caudell, J.J., Tang, C.H., Yu, T.K., Frederick, M.J. and Grimm, E.A. 2000. Characterization of human copine 3 as a phosphoprotein with associated kinase activity. *Biochemistry* 39: 13034-13043.
- Tomsig, J.L. and Creutz, C.E. 2000. Biochemical characterization of copine: a ubiquitous Ca²⁺-dependent, phospholipid-binding protein. *Biochemistry* 39: 16163-16175.
- Tomsig, J.L. and Creutz, C.E. 2002. Copines: a ubiquitous family of Ca²⁺-dependent phospholipid-binding proteins. *Cell. Mol. Life Sci.* 59: 1467-1477.
- Tomsig, J.L., Snyder, S.L. and Creutz, C.E. 2003. Identification of targets for calcium signaling through the copine family of proteins. Characterization of a coiled-coil copine-binding motif. *J. Biol. Chem.* 278: 10048-10054.
- Cowland, J.B., Carter, D., Bjerregaard, M.D., Johnsen, A.H., Borregaard, N. and Lollike, K. 2003. Tissue expression of copines and isolation of copines 1 and 3 from the cytosol of human neutrophils. *J. Leukoc. Biol.* 74: 379-388.
- Thomas, G., Jacobs, K.B., Yeager, M., Kraft, P., Wacholder, S., Orr, N., Yu, K., Chatterjee, N., Welch, R., Hutchinson, A., Crenshaw, A., Cancel-Tassin, G., Staats, B.J., Wang, Z., Gonzalez-Bosquet, J., Fang, J., Deng, X., et al. 2008. Multiple loci identified in a genome-wide association study of prostate cancer. *Nat. Genet.* 40: 310-315.

CHROMOSOMAL LOCATION

Genetic locus: CPNE3 (human) mapping to 8q21.3; Cpne3 (mouse) mapping to 4 A3.

SOURCE

copine 3 (F-12) is an affinity purified rabbit polyclonal antibody raised against a peptide mapping within an internal region of copine 3 of human origin.

RESEARCH USE

For research use only, not for use in diagnostic procedures.

PRODUCT

Each vial contains 100 µg IgG in 1.0 ml of PBS with < 0.1% sodium azide and 0.1% gelatin.

Blocking peptide available for competition studies, sc-87052 P, (100 µg peptide in 0.5 ml PBS containing < 0.1% sodium azide and 0.2% BSA).

APPLICATIONS

copine 3 (F-12) is recommended for detection of copine 3 of mouse, rat and human origin by Western Blotting (starting dilution 1:200, dilution range 1:100-1:1000), immunoprecipitation [1-2 µg per 100-500 µg of total protein (1 ml of cell lysate)], immunofluorescence (starting dilution 1:50, dilution range 1:50-1:500) and solid phase ELISA (starting dilution 1:30, dilution range 1:30-1:3000); non cross-reactive with other copine family members.

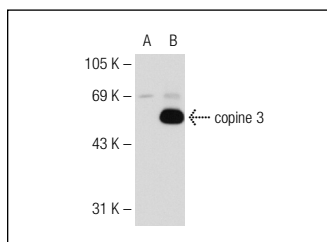
copine 3 (F-12) is also recommended for detection of copine 3 in additional species, including canine, bovine, porcine and avian.

Suitable for use as control antibody for copine 3 siRNA (h): sc-77730, copine 3 siRNA (m): sc-142504, copine 3 shRNA Plasmid (h): sc-77730-SH, copine 3 shRNA Plasmid (m): sc-142504-SH, copine 3 shRNA (h) Lentiviral Particles: sc-77730-V and copine 3 shRNA (m) Lentiviral Particles: sc-142504-V.

Molecular Weight of copine 3: 61 kDa.

Positive Controls: copine 3 (h): 293T Lysate: sc-117061.

DATA



copine 3 (F-12): sc-87052. Western blot analysis of copine 3 expression in non-transfected: sc-117752 (A) and human copine 3 transfected: sc-117061 (B) 293T whole cell lysates.

STORAGE

Store at 4° C, **DO NOT FREEZE**. Stable for one year from the date of shipment. Non-hazardous. No MSDS required.

PROTOCOLS

See our web site at www.scbt.com or our catalog for detailed protocols and support products.

MONOS
Satisfaction
Guaranteed

Try **copine 3 (C-7): sc-390143** or **copine 1/3 (E-8): sc-393249**, our highly recommended monoclonal alternatives to copine 3 (F-12).