

# Ly-6D (T-14): sc-87278

## BACKGROUND

Ly-6D (Lymphocyte antigen 6D), also known as E48 antigen, is a 128 amino acid glycoprotein that is expressed in squamous cell carcinoma cell lines and squamous cell epithelia tissue. Ly-6D contains a signal peptide, two theoretical phosphorylation sites and three putative myristoylation sites. Upregulation of the gene encoding Ly-6D in head and neck cancers is associated with poor prognosis and high expression of Ly-6D has been linked to enhanced cell migration. Ly-6D is frequently used as a molecular marker for diagnosis and therapy of head-and-neck squamous cell carcinoma (HNSCC). It has been suggested that Ly-6D may regulate the expression levels of certain fucosylated E-Selectin ligands and protein FX, a protein that contributes to the last step in the synthesis of GDP-L-fucose, in HNSCC cell lines. This finding is indicative that Ly-6D may regulate tumor cell adhesion in inflamed vessel walls that express E-Selectin.

## REFERENCES

1. Brakenhoff, R.H., et al. 1995. The human E48 antigen, highly homologous to the murine Ly-6 antigen ThB, is a GPI-anchored molecule apparently involved in keratinocyte cell-cell adhesion. *J. Cell Biol.* 129: 1677-1689.
2. Brakenhoff, R.H., et al. 1997. A gain of novel tissue specificity in the human Ly-6 gene E48. *J. Immunol.* 159: 4879-4886.
3. Shan, X., et al. 1998. Characterization and mapping to human chromosome 8q24.3 of Ly-6-related gene 9804 encoding an apparent homologue of mouse TSA-1. *J. Immunol.* 160: 197-208.
4. Eshel, R., et al. 2000. The GPI-linked Ly-6 antigen E48 regulates expression levels of the FX enzyme and of E-Selectin ligands on head and neck squamous carcinoma cells. *J. Biol. Chem.* 275: 12833-12840.
5. Online Mendelian Inheritance in Man, OMIM™. 2001. Johns Hopkins University, Baltimore, MD. MIM Number: 606204. World Wide Web URL: <http://www.ncbi.nlm.nih.gov/omim/>
6. Tsukada, Y., et al. 2002. Expression of Ly-6D on the surface of normal and neoplastic mammary epithelial cells of the mouse. *Jpn. J. Cancer Res.* 93: 986-993.

## CHROMOSOMAL LOCATION

Genetic locus: LY6D (human) mapping to 8q24.3.

## SOURCE

Ly-6D (T-14) is an affinity purified goat polyclonal antibody raised against a peptide mapping within an internal region of Ly-6D of human origin.

## PRODUCT

Each vial contains 200 µg IgG in 1.0 ml of PBS with < 0.1% sodium azide and 0.1% gelatin.

Blocking peptide available for competition studies, sc-87278 P, (100 µg peptide in 0.5 ml PBS containing < 0.1% sodium azide and 0.2% BSA).

## RESEARCH USE

For research use only, not for use in diagnostic procedures.

## APPLICATIONS

Ly-6D (T-14) is recommended for detection of Ly-6D of human origin by Western Blotting (starting dilution 1:200, dilution range 1:100-1:1000), immunoprecipitation [1-2 µg per 100-500 µg of total protein (1 ml of cell lysate)], immunofluorescence (starting dilution 1:50, dilution range 1:50-1:500) and solid phase ELISA (starting dilution 1:30, dilution range 1:30-1:3000).

Suitable for use as control antibody for Ly-6D siRNA (h): sc-77553, Ly-6D shRNA Plasmid (h): sc-77553-SH and Ly-6D shRNA (h) Lentiviral Particles: sc-77553-V.

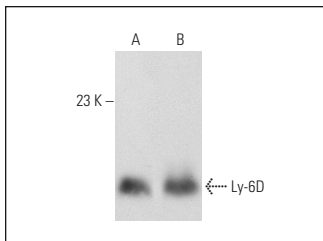
Molecular Weight of Ly-6D: 17 kDa.

Positive Controls: SCC-4 whole cell lysate: sc-364363, SCC-25 whole cell lysate or A-431 whole cell lysate: sc-2201.

## RECOMMENDED SECONDARY REAGENTS

To ensure optimal results, the following support (secondary) reagents are recommended: 1) Western Blotting: use donkey anti-goat IgG-HRP: sc-2020 (dilution range: 1:2000-1:100,000) or Cruz Marker™ compatible donkey anti-goat IgG-HRP: sc-2033 (dilution range: 1:2000-1:5000), Cruz Marker™ Molecular Weight Standards: sc-2035, TBS Blotto A Blocking Reagent: sc-2333 and Western Blotting Luminol Reagent: sc-2048. 2) Immunoprecipitation: use Protein A/G PLUS-Agarose: sc-2003 (0.5 ml agarose/2.0 ml). 3) Immunofluorescence: use donkey anti-goat IgG-FITC: sc-2024 (dilution range: 1:100-1:400) or donkey anti-goat IgG-TR: sc-2783 (dilution range: 1:100-1:400) with UltraCruz™ Mounting Medium: sc-24941.

## DATA



Ly-6D (T-14): sc-87278. Western blot analysis of Ly-6D expression in SCC-4 (A) and SCC-25 (B) whole cell lysates.

## STORAGE

Store at 4° C, \*\*DO NOT FREEZE\*\*. Stable for one year from the date of shipment. Non-hazardous. No MSDS required.


 MONOS  
Satisfaction  
Guaranteed

Try **Ly-6D (C-8): sc-373838** or **Ly-6D (F-6): sc-374193**, our highly recommended monoclonal alternatives to Ly-6D (T-14).