

# MRP-S28 (A-14): sc-87311

## BACKGROUND

Mammalian mitochondrial ribosomes (mitoribosomes) are responsible for protein synthesis within the mitochondrion. The mitoribosomes are composed of a 4:1 ratio of protein to RNA, with the proteins forming two subunits, the 28S subunit and the 39S subunit. Across species, the proteins that make up the mitoribosome subunits vary greatly in sequence, preventing easy recognition by sequence homology. MRP-S28 (mitochondrial 28S ribosomal protein S28), also known as S28mt or MRP-S35, is a 187 amino acid mitochondrial ribosomal protein. Localized to mitochondria, MRP-S28 is present in the 28S subunit of the mitoribosomes.

## REFERENCES

1. Goldschmidt-Reisin, S., Kitakawa, M., Herfurth, E., Wittmann-Liebold, B., Grohmann, L. and Graack, H.R. 1998. Mammalian mitochondrial ribosomal proteins. N-terminal amino acid sequencing, characterization, and identification of corresponding gene sequences. *J. Biol. Chem.* 273: 34828-34836.
2. Hattori, A., Okumura, K., Nagase, T., Kikuno, R., Hirose, M. and Ohara, O. 2000. Characterization of long cDNA clones from human adult spleen. *DNA Res.* 7: 357-366.
3. Koc, E.C., Burkhart, W., Blackburn, K., Moseley, A., Koc, H. and Spremulli, L.L. 2000. A proteomics approach to the identification of mammalian mitochondrial small subunit ribosomal proteins. *J. Biol. Chem.* 275: 32585-32591.
4. Cavdar Koc, E., Burkhart, W., Blackburn, K., Moseley, A. and Spremulli, L.L. 2001. The small subunit of the mammalian mitochondrial ribosome. Identification of the full complement of ribosomal proteins present. *J. Biol. Chem.* 276: 19363-19374.
5. Kenmochi, N., Suzuki, T., Uechi, T., Magoori, M., Kuniba, M., Higa, S., Watanabe, K. and Tanaka, T. 2001. The human mitochondrial ribosomal protein genes: mapping of 54 genes to the chromosomes and implications for human disorders. *Genomics* 77: 65-70.
6. Scanlan, M.J., Gout, I., Gordon, C.M., Williamson, B., Stockert, E., Gure, A.O., Jäger, D., Chen, Y.T., Mackay, A., O'Hare, M.J. and Old, L.J. 2001. Humoral immunity to human breast cancer: antigen definition and quantitative analysis of mRNA expression. *Cancer Immun.* 1: 4.
7. Zhang, Z. and Gerstein, M. 2003. Identification and characterization of over 100 mitochondrial ribosomal protein pseudogenes in the human genome. *Genomics* 81: 468-480.

## CHROMOSOMAL LOCATION

Genetic locus: MRPS28 (human) mapping to 8q21.13; Mrps28 (mouse) mapping to 3 A1.

## SOURCE

MRP-S28 (A-14) is an affinity purified goat polyclonal antibody raised against a peptide mapping within an internal region of MRP-S28 of human origin.

## RESEARCH USE

For research use only, not for use in diagnostic procedures.

## PRODUCT

Each vial contains 200 µg IgG in 1.0 ml of PBS with < 0.1% sodium azide and 0.1% gelatin.

Blocking peptide available for competition studies, sc-87311 P, (100 µg peptide in 0.5 ml PBS containing < 0.1% sodium azide and 0.2% BSA).

## APPLICATIONS

MRP-S28 (A-14) is recommended for detection of MRP-S28 of mouse, rat and human origin by Western Blotting (starting dilution 1:200, dilution range 1:100-1:1000), immunofluorescence (starting dilution 1:50, dilution range 1:50-1:500) and solid phase ELISA (starting dilution 1:30, dilution range 1:30-1:3000).

Suitable for use as control antibody for MRP-S28 siRNA (h): sc-77576, MRP-S28 siRNA (m): sc-149628, MRP-S28 shRNA Plasmid (h): sc-77576-SH, MRP-S28 shRNA Plasmid (m): sc-149628-SH, MRP-S28 shRNA (h) Lentiviral Particles: sc-77576-V and MRP-S28 shRNA (m) Lentiviral Particles: sc-149628-V.

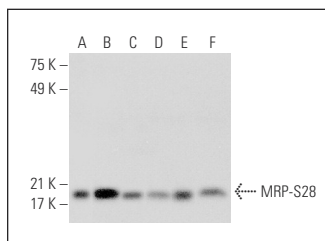
Molecular Weight of MRP-S28: 21 kDa.

Positive Controls: HeLa whole cell lysate: sc-2200, Hep G2 cell lysate: sc-2227 or K-562 whole cell lysate: sc-2203.

## RECOMMENDED SECONDARY REAGENTS

To ensure optimal results, the following support (secondary) reagents are recommended: 1) Western Blotting: use donkey anti-goat IgG-HRP: sc-2020 (dilution range: 1:2000-1:100,000) or Cruz Marker™ compatible donkey anti-goat IgG-HRP: sc-2033 (dilution range: 1:2000-1:5000), Cruz Marker™ Molecular Weight Standards: sc-2035, TBS Blotto A Blocking Reagent: sc-2333 and Western Blotting Luminol Reagent: sc-2048. 2) Immunofluorescence: use donkey anti-goat IgG-FITC: sc-2024 (dilution range: 1:100-1:400) or donkey anti-goat IgG-TR: sc-2783 (dilution range: 1:100-1:400) with UltraCruz™ Mounting Medium: sc-24941.

## DATA



MRP-S28 (A-14): sc-87311. Western blot analysis of MRP-S28 expression in HeLa (A), Hep G2 (B), U-251-MG (C), Jurkat (D), K-562 (E) and A549 (F) whole cell lysates.

## STORAGE

Store at 4° C, \*\*DO NOT FREEZE\*\*. Stable for one year from the date of shipment. Non-hazardous. No MSDS required.