

## NPAL2 (N-14): sc-87332

### BACKGROUND

Non-imprinted in Prader-Willi/Angelman syndrome (NIPA) proteins are highly conserved receptors or transporters. A family known as the NIPA-like domain containing (NPAL) proteins are closely related to the NIPA proteins, but most are uncharacterized and their functions are unknown. NPAL2 (NIPA-like domain containing 2), also known as NIPAL2, is a 368 amino acid multi-pass membrane protein belonging to the NIPA family and is encoded by a gene located on human chromosome 8. Human chromosome 8 consists of nearly 146 million base pairs, houses more than 800 genes and is associated with a variety of diseases and malignancies. Schizophrenia, bipolar disorder, Trisomy 8, Pfeiffer syndrome, congenital hypothyroidism, Waardenburg syndrome and some leukemias and lymphomas are thought to occur as a result of defects in specific genes that map to chromosome 8.

### REFERENCES

1. Kashino, G., Kodama, S., Suzuki, K., Oshimura, M. and Watanabe, M. 2001. Preferential expression of an intact WRN gene in Werner syndrome cell lines in which a normal chromosome 8 has been introduced. *Biochem. Biophys. Res. Commun.* 289: 111-115.
2. Chai, J.H., Locke, D.P., Grealley, J.M., Knoll, J.H., Ohta, T., Dunai, J., Yavor, A., Eichler, E.E. and Nicholls, R.D. 2003. Identification of four highly conserved genes between breakpoint hotspots BP1 and BP2 of the Prader-Willi/Angelman syndromes deletion region that have undergone evolutionary transposition mediated by flanking duplicons. *Am. J. Hum. Genet.* 73: 898-925.
3. Diene, G., Postel-Vinay, A., Pinto, G., Polak, M. and Tauber, M. 2007. The Prader-Willi syndrome. *Ann. Endocrinol.* 68: 129-137.
4. Goytain, A., Hines, R.M. and Quamme, G.A. 2008. Functional characterization of NIPA2, a selective Mg<sup>2+</sup> transporter. *Am. J. Physiol., Cell Physiol.* 295: C944-C953.
5. Guthrie, K.A., Tishkevich, N.R. and Nelson, J.L. 2009. Non-inherited maternal human leukocyte antigen alleles in susceptibility to familial rheumatoid arthritis. *Ann. Rheum. Dis.* 68: 107-109.
6. Grzmil, P., Konietzko, J., Boehm, D., Hölter, S.M., Hoelter, S.M., Aguilar-Pimentel, A., Aguilar, A., Javaheri, A., Kalaydjiev, S., Adler, T., Bolle, I., Adham, I., Dixkens, C., Wolf, S., Fuchs, H., Gailus-Durner, V., et al. 2009. Targeted disruption of the mouse *Npal3* gene leads to deficits in behavior, increased IgE levels, and impaired lung function. *Cytogenet. Genome Res.* 125: 186-200.
7. Quamme, G.A. 2010. Molecular identification of ancient and modern mammalian magnesium transporters. *Am. J. Physiol., Cell Physiol.* 298: C407-C429.

### CHROMOSOMAL LOCATION

Genetic locus: NIPAL2 (human) mapping to 8q22.2; Nipal2 (mouse) mapping to 15 B3.1.

### SOURCE

NPAL2 (N-14) is an affinity purified goat polyclonal antibody raised against a peptide mapping near the N-terminus of NPAL2 of human origin.

### PRODUCT

Each vial contains 200 µg IgG in 1.0 ml of PBS with < 0.1% sodium azide and 0.1% gelatin.

Blocking peptide available for competition studies, sc-87332 P, (100 µg peptide in 0.5 ml PBS containing < 0.1% sodium azide and 0.2% BSA).

### APPLICATIONS

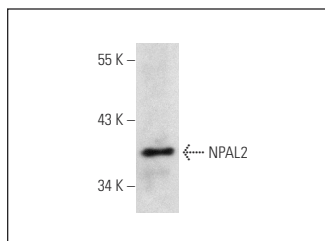
NPAL2 (N-14) is recommended for detection of NPAL2 of mouse, rat and human origin by Western Blotting (starting dilution 1:200, dilution range 1:100-1:1000), immunoprecipitation [1-2 µg per 100-500 µg of total protein (1 ml of cell lysate)], immunofluorescence (starting dilution 1:50, dilution range 1:50-1:500) and solid phase ELISA (starting dilution 1:30, dilution range 1:30-1:3000); non cross-reactive with NPAL3.

Suitable for use as control antibody for NPAL2 siRNA (h): sc-77753, NPAL2 siRNA (m): sc-150044, NPAL2 shRNA Plasmid (h): sc-77753-SH, NPAL2 shRNA Plasmid (m): sc-150044-SH, NPAL2 shRNA (h) Lentiviral Particles: sc-77753-V and NPAL2 shRNA (m) Lentiviral Particles: sc-150044-V.

Molecular Weight of NPAL2: 41 kDa.

Positive Controls: mouse prostate extract: sc-364249.

### DATA



NPAL2 (N-14): sc-87332. Western blot analysis of NPAL2 expression in mouse prostate tissue extract.

### STORAGE

Store at 4° C, **\*\*DO NOT FREEZE\*\***. Stable for one year from the date of shipment. Non-hazardous. No MSDS required.

### RESEARCH USE

For research use only, not for use in diagnostic procedures.

### PROTOCOLS

See our web site at [www.scbt.com](http://www.scbt.com) or our catalog for detailed protocols and support products.