

PROSC (E-14): sc-87370

BACKGROUND

PROSC (proline synthetase co-transcribed bacterial homolog protein) is a 275 amino acid ubiquitously expressed enzyme that is highly conserved from bacteria to mammals. The gene encoding PROSC is cotranscribed with proline synthetase. PROSC requires the cofactor pyridoxal phosphate, the active form of vitamin B6 that acts in all transamination reactions. The PROSC gene maps to human chromosome 8, which is made up of nearly 146 million bases and encodes about 800 genes. Translocation of portions of chromosome 8 with amplifications of the c-Myc gene are found in some leukemias and lymphomas, and are typically associated with a poor prognosis. Portions of chromosome 8 have been linked to schizophrenia and bipolar disorder. Chromosome 8 is also associated with Pfeiffer syndrome, congenital hypothyroidism and Waardenburg syndrome.

REFERENCES

- Wildenauer, D.B. and Schwab, S.G. 1999. Chromosomes 8 and 10 workshop. *Am. J. Med. Genet.* 88: 239-243.
- Ikegawa, S., Isomura, M., Koshizuka, Y. and Nakamura, Y. 1999. Cloning and characterization of human and mouse PROSC (proline synthetase co-transcribed) genes. *J. Hum. Genet.* 44: 337-342.
- Kashino, G., Kodama, S., Suzuki, K., Oshimura, M. and Watanabe, M. 2001. Preferential expression of an intact WRN gene in Werner syndrome cell lines in which a normal chromosome 8 has been introduced. *Biochem. Biophys. Res. Commun.* 289: 111-115.
- Wiemann, S., Weil, B., Wellenreuther, R., Gassenhuber, J., Glassl, S., Ansorge, W., Böcher, M., Blöcker, H., Bauersachs, S., Blum, H., Lauber, J., Dusterhöft, A., Beyer, A., Köhrer, K., Strack, N., Mewes, H.W., et al. 2001. Toward a catalog of human genes and proteins: sequencing and analysis of 500 novel complete protein coding human cDNAs. *Genome Res.* 11: 422-435.
- Selicorni, A., Gueneri, S., Ratti, A. and Pizzuti, A. 2002. Cytogenetic mapping of a novel locus for type II Waardenburg syndrome. *Hum. Genet.* 110: 64-67.
- Percudani, R. and Peracchi, A. 2003. A genomic overview of pyridoxal-phosphate-dependent enzymes. *EMBO Rep.* 4: 850-854.
- Eliot, A.C. and Kirsch, J.F. 2004. Pyridoxal phosphate enzymes: mechanistic, structural, and evolutionary considerations. *Annu. Rev. Biochem.* 73: 383-415.
- Nusbaum, C., Mikkelsen, T.S., Zody, M.C., Asakawa, S., Taudien, S., Garber, M., Kodira, C.D., Schueler, M.G., Shimizu, A., Whittaker, C.A., Chang, J.L., Cuomo, C.A., Dewar, K., FitzGerald, M.G., Yang, X., Allen, N.R., et al. 2006. DNA sequence and analysis of human chromosome 8. *Nature* 439: 331-335.

CHROMOSOMAL LOCATION

Genetic locus: PROSC (human) mapping to 8p11.23; Prosc (mouse) mapping to 8 A2.

RESEARCH USE

For research use only, not for use in diagnostic procedures.

SOURCE

PROSC (E-14) is an affinity purified goat polyclonal antibody raised against a peptide mapping within an internal region of PROSC of human origin.

PRODUCT

Each vial contains 200 µg IgG in 1.0 ml of PBS with < 0.1% sodium azide and 0.1% gelatin.

Blocking peptide available for competition studies, sc-87370 P, (100 µg peptide in 0.5 ml PBS containing < 0.1% sodium azide and 0.2% BSA).

APPLICATIONS

PROSC (E-14) is recommended for detection of PROSC of mouse, rat and human origin by Western Blotting (starting dilution 1:200, dilution range 1:100-1:1000), immunoprecipitation [1-2 µg per 100-500 µg of total protein (1 ml of cell lysate)], immunofluorescence (starting dilution 1:50, dilution range 1:50-1:500) and solid phase ELISA (starting dilution 1:30, dilution range 1:30-1:3000).

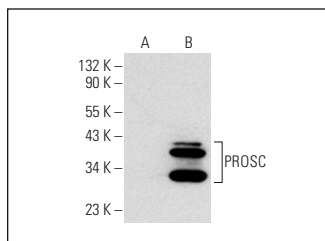
PROSC (E-14) is also recommended for detection of PROSC in additional species, including equine, canine, bovine and porcine.

Suitable for use as control antibody for PROSC siRNA (h): sc-77811, PROSC siRNA (m): sc-152482, PROSC shRNA Plasmid (h): sc-77811-SH, PROSC shRNA Plasmid (m): sc-152482-SH, PROSC shRNA (h) Lentiviral Particles: sc-77811-V and PROSC shRNA (m) Lentiviral Particles: sc-152482-V.

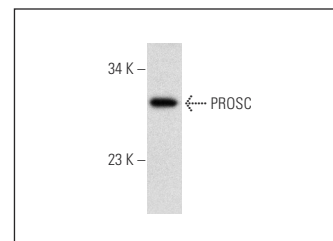
Molecular Weight of PROSC: 30 kDa.

Positive Controls: PROSC (h): 293T Lysate: sc-177782, Jurkat whole cell lysate: sc-2204 or K-562 whole cell lysate: sc-2203.

DATA



PROSC (E-14): sc-87370. Western blot analysis of PROSC expression in non-transfected: sc-117752 (A) and human PROSC transfected: sc-177782 (B) 293T whole cell lysates.



PROSC (E-14): sc-87370. Western blot analysis of PROSC expression in Jurkat whole cell lysate.

STORAGE

Store at 4° C, ****DO NOT FREEZE****. Stable for one year from the date of shipment. Non-hazardous. No MSDS required.

PROTOCOLS

See our web site at www.scbt.com or our catalog for detailed protocols and support products.