

# REEP4 (K-12): sc-87392

## BACKGROUND

REEP4 (receptor accessory protein 4), which is also known as Receptor expression-enhancing protein 4, PP432, FLJ22246, C8orf20 or FLJ22277, is a 257 amino acid multi-pass membrane protein that interacts with odorant receptor proteins. REEP4 may be involved increasing odorant receptors on cell surfaces, although REEP4 itself is not expressed in olfactory neurons. REEP4 is a member of the DP1 family and has two isoforms which form as a result of alternative splicing events. The gene encoding REEP4 maps to human chromosome 8p21.3. Consisting of nearly 146 million base pairs, chromosome 8 encodes over 800 genes and is associated with a variety of diseases and malignancies. Schizophrenia, bipolar disorder, Trisomy 8, Pfeiffer syndrome, congenital hypothyroidism, Waardenburg syndrome and some leukemias and lymphomas are thought to occur as a result of defects in specific genes that maps to chromosome 8.

## REFERENCES

- Wildenauer, D.B. and Schwab, S.G. 1999. Chromosomes 8 and 10 workshop. *Am. J. Med. Genet.* 88: 239-243.
- Kashino, G., et al. 2001. Preferential expression of an intact WRN gene in Werner syndrome cell lines in which a normal chromosome 8 has been introduced. *Biochem. Biophys. Res. Commun.* 289: 111-115.
- Selicorni, A., et al. 2002. Cytogenetic mapping of a novel locus for type II Waardenburg syndrome. *Hum. Genet.* 110: 64-67.
- Saito, H., et al. 2004. RTP family members induce functional expression of mammalian odorant receptors. *Cell* 119: 679-691.
- McQueen, M.B., et al. 2005. Combined analysis from eleven linkage studies of bipolar disorder provides strong evidence of susceptibility loci on chromosomes 6q and 8q. *Am. J. Hum. Genet.* 77: 582-595.
- Agrelo, R., et al. 2006. Epigenetic inactivation of the premature aging Werner syndrome gene in human cancer. *Proc. Natl. Acad. Sci USA* 103: 8822-8827.
- Mossafa, H., et al. 2006. Non-Hodgkin's lymphomas with Burkitt-like cells are associated with c-Myc amplification and poor prognosis. *Leuk. Lymphoma* 47: 1885-1893.

## CHROMOSOMAL LOCATION

Genetic locus: REEP4 (human) mapping to 8p21.3; Reep4 (mouse) mapping to 14 D2.

## SOURCE

REEP4 (K-12) is an affinity purified goat polyclonal antibody raised against a peptide mapping within an internal region of REEP4 of human origin.

## PRODUCT

Each vial contains 200 µg IgG in 1.0 ml of PBS with < 0.1% sodium azide and 0.1% gelatin.

Blocking peptide available for competition studies, sc-87392 P, (100 µg peptide in 0.5 ml PBS containing < 0.1% sodium azide and 0.2% BSA).

## APPLICATIONS

REEP4 (K-12) is recommended for detection of REEP4 of mouse, rat and human origin by Western Blotting (starting dilution 1:200, dilution range 1:100-1:1000), immunoprecipitation [1-2 µg per 100-500 µg of total protein (1 ml of cell lysate)], immunofluorescence (starting dilution 1:50, dilution range 1:50-1:500) and solid phase ELISA (starting dilution 1:30, dilution range 1:30-1:3000).

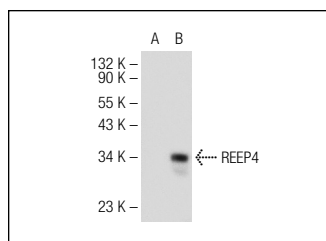
REEP4 (K-12) is also recommended for detection of REEP4 in additional species, including canine and bovine.

Suitable for use as control antibody for REEP4 siRNA (h): sc-77726, REEP4 siRNA (m): sc-152793, REEP4 shRNA Plasmid (h): sc-77726-SH, REEP4 shRNA Plasmid (m): sc-152793-SH, REEP4 shRNA (h) Lentiviral Particles: sc-77726-V and REEP4 shRNA (m) Lentiviral Particles: sc-152793-V.

Molecular Weight of REEP4: 29 kDa.

Positive Controls: REEP4 (h): 293T Lysate: sc-113048.

## DATA



REEP4 (K-12): sc-87392. Western blot analysis of REEP4 expression in non-transfected: sc-117752 (A) and human REEP4 transfected: sc-113048 (B) 293T whole cell lysates.

## STORAGE

Store at 4° C, **\*\*DO NOT FREEZE\*\***. Stable for one year from the date of shipment. Non-hazardous. No MSDS required.

## RESEARCH USE

For research use only, not for use in diagnostic procedures.

## PROTOCOLS

See our web site at [www.scbt.com](http://www.scbt.com) or our catalog for detailed protocols and support products.

**MONOS**  
Satisfaction  
Guaranteed

Try **REEP4 (H-12): sc-398191**, our highly recommended monoclonal alternative to REEP4 (K-12).