

# Ribosomal Protein L8 (W-15): sc-87399

## BACKGROUND

Ribosomes, the organelles that catalyze protein synthesis, are composed of a small subunit (40S) and a large subunit (60S) that consist of over 80 distinct ribosomal proteins. Mammalian ribosomal proteins are encoded by multigene families that contain processed pseudogenes and one functional intron-containing gene within their coding regions. Ribosomal Protein L8, also known as RPL8, is a 257 amino acid protein that localizes to the cytoplasm and exists as a component of the 60S subunit where it is thought to play a role in aminoacyl-tRNA binding, specifically at the ribosomal subunit interface. Ribosomal Protein L8 exists as multiple processed pseudogenes that are scattered throughout the genome. The gene encoding Ribosomal Protein L8 maps to human chromosome 8, which consists of nearly 146 million base pairs, houses more than 800 genes and is associated with a variety of diseases and malignancies.

## REFERENCES

- Hanes, J., et al. 1993. Characterization by cDNA cloning of the mRNA of human Ribosomal Protein L8. *Biochem. Biophys. Res. Commun.* 197: 1223-1228.
- Wool, I.G., et al. 1995. Structure and evolution of mammalian ribosomal proteins. *Biochem. Cell Biol.* 73: 933-947.
- Kenmochi, N., et al. 1998. A map of 75 human ribosomal protein genes. *Genome Res.* 8: 509-523.
- Online Mendelian Inheritance in Man, OMIM<sup>™</sup>. 1999. Johns Hopkins University, Baltimore, MD. MIM Number: 604177. World Wide Web URL: <http://www.ncbi.nlm.nih.gov/omim/>

## CHROMOSOMAL LOCATION

Genetic locus: RPL8 (human) mapping to 8q24.3; Rpl8 (mouse) mapping to 15 D3.

## SOURCE

Ribosomal Protein L8 (W-15) is an affinity purified goat polyclonal antibody raised against a peptide mapping within an internal region of Ribosomal Protein L8 of human origin.

## PRODUCT

Each vial contains 200 µg IgG in 1.0 ml of PBS with < 0.1% sodium azide and 0.1% gelatin.

Blocking peptide available for competition studies, sc-87399 P, (100 µg peptide in 0.5 ml PBS containing < 0.1% sodium azide and 0.2% BSA).

## STORAGE

Store at 4° C, **\*\*DO NOT FREEZE\*\***. Stable for one year from the date of shipment. Non-hazardous. No MSDS required.

## PROTOCOLS

See our web site at [www.scbt.com](http://www.scbt.com) or our catalog for detailed protocols and support products.

## APPLICATIONS

Ribosomal Protein L8 (W-15) is recommended for detection of Ribosomal Protein L8 of mouse, rat and human origin by Western Blotting (starting dilution 1:200, dilution range 1:100-1:1000), immunoprecipitation [1-2 µg per 100-500 µg of total protein (1 ml of cell lysate)], immunofluorescence (starting dilution 1:50, dilution range 1:50-1:500) and solid phase ELISA (starting dilution 1:30, dilution range 1:30-1:3000); non cross-reactive with Ribosomal family members.

Ribosomal Protein L8 (W-15) is also recommended for detection of Ribosomal Protein L8 in additional species, including canine, bovine, porcine and avian.

Suitable for use as control antibody for Ribosomal Protein L8 siRNA (h): sc-77802, Ribosomal Protein L8 siRNA (m): sc-152927, Ribosomal Protein L8 shRNA Plasmid (h): sc-77802-SH, Ribosomal Protein L8 shRNA Plasmid (m): sc-152927-SH, Ribosomal Protein L8 shRNA (h) Lentiviral Particles: sc-77802-V and Ribosomal Protein L8 shRNA (m) Lentiviral Particles: sc-152927-V.

Molecular Weight of (predicted) Ribosomal Protein L8: 28 kDa.

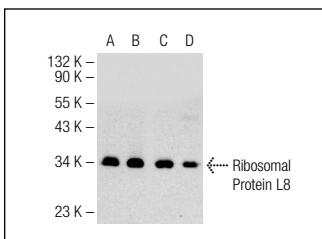
Molecular Weight of (observed) Ribosomal Protein L8: 34 kDa.

Positive Controls: Hep G2 cell lysate: sc-2227, HeLa whole cell lysate: sc-2200 or Jurkat nuclear extract: sc-2132.

## RECOMMENDED SECONDARY REAGENTS

To ensure optimal results, the following support (secondary) reagents are recommended: 1) Western Blotting: use donkey anti-goat IgG-HRP: sc-2020 (dilution range: 1:2000-1:100,000) or Cruz Marker<sup>™</sup> compatible donkey anti-goat IgG-HRP: sc-2033 (dilution range: 1:2000-1:5000), Cruz Marker<sup>™</sup> Molecular Weight Standards: sc-2035, TBS Blotto A Blocking Reagent: sc-2333 and Western Blotting Luminol Reagent: sc-2048. 2) Immunoprecipitation: use Protein A/G PLUS-Agarose: sc-2003 (0.5 ml agarose/2.0 ml). 3) Immunofluorescence: use donkey anti-goat IgG-FITC: sc-2024 (dilution range: 1:100-1:400) or donkey anti-goat IgG-TR: sc-2783 (dilution range: 1:100-1:400) with UltraCruz<sup>™</sup> Mounting Medium: sc-24941.

## DATA



Ribosomal Protein L8 (W-15): sc-87399. Western blot analysis of Ribosomal Protein L8 expression in Hep G2 (A) and Jurkat (B) whole cell lysates and Hep G2 (C) and Jurkat (D) nuclear extracts.

## RESEARCH USE

For research use only, not for use in diagnostic procedures.