

RPESP (D-20): sc-87409

BACKGROUND

Made up of nearly 146 million bases, chromosome 8 encodes about 800 genes. Translocation of portions of chromosome 8 with amplifications of the c-Myc gene are found in some leukemias and lymphomas, and typically associated with a poor prognosis. Portions of chromosome 8 have been linked to schizophrenia and bipolar disorder. Trisomy 8, also known as Warkany syndrome 2, most often results in early miscarriage but is occasionally seen in a mosaic form in surviving patients who suffer to a varying degree from a number of symptoms including retarded mental and motor development, and certain facial and developmental defects. WRN is a DNA helicase encoded by chromosome 8 and shown defective in those with the early aging disorder Werner syndrome. Chromosome 8 is also associated with Pfeiffer syndrome, congenital hypothyroidism and Waardenburg syndrome.

REFERENCES

1. Wildenauer, D.B. and Schwab, S.G. 1999. Chromosomes 8 and 10 workshop. *Am. J. Med. Genet.* 88: 239-243.
2. Kashino, G., Kodama, S., Suzuki, K., Oshimura, M. and Watanabe, M. 2001. Preferential expression of an intact WRN gene in Werner syndrome cell lines in which a normal chromosome 8 has been introduced. *Biochem. Biophys. Res. Commun.* 289: 111-115.
3. Selicorni, A., Gueneri, S., Ratti, A. and Pizzuti, A. 2002. Cytogenetic mapping of a novel locus for type II Waardenburg syndrome. *Hum. Genet.* 110: 64-67.
4. McQueen, M.B., Devlin, B., Faraone, S.V., Nimgaonkar, V.L., Sklar, P., Smoller, J.W., Abou Jamra, R., Albus, M., et al. 2005. Combined analysis from eleven linkage studies of bipolar disorder provides strong evidence of susceptibility loci on chromosomes 6q and 8q. *Am. J. Hum. Genet.* 77: 582-595.

CHROMOSOMAL LOCATION

Genetic locus: C8orf84 (human) mapping to 8q21.11; Gm106 (mouse) mapping to 1 A3.

SOURCE

RPESP (D-20) is an affinity purified rabbit polyclonal antibody raised against a peptide mapping near the C-terminus of RPESP of human origin.

PRODUCT

Each vial contains 100 µg IgG in 1.0 ml of PBS with < 0.1% sodium azide and 0.1% gelatin.

Blocking peptide available for competition studies, sc-87409 P, (100 µg peptide in 0.5 ml PBS containing < 0.1% sodium azide and 0.2% BSA).

STORAGE

Store at 4° C, ****DO NOT FREEZE****. Stable for one year from the date of shipment. Non-hazardous. No MSDS required.

APPLICATIONS

RPESP (D-20) is recommended for detection of RPESP of mouse, rat and human origin by Western Blotting (starting dilution 1:200, dilution range 1:100-1:1000), immunoprecipitation [1-2 µg per 100-500 µg of total protein (1 ml of cell lysate)], immunofluorescence (starting dilution 1:50, dilution range 1:50-1:500), immunohistochemistry (including paraffin-embedded sections) (starting dilution 1:50, dilution range 1:50-1:500) and solid phase ELISA (starting dilution 1:30, dilution range 1:30-1:3000).

RPESP (D-20) is also recommended for detection of RPESP in additional species, including canine, bovine and porcine.

Suitable for use as control antibody for RPESP siRNA (h): sc-77491, RPESP siRNA (m): sc-145466, RPESP shRNA Plasmid (h): sc-77491-SH, RPESP shRNA Plasmid (m): sc-145466-SH, RPESP shRNA (h) Lentiviral Particles: sc-77491-V and RPESP shRNA (m) Lentiviral Particles: sc-145466-V.

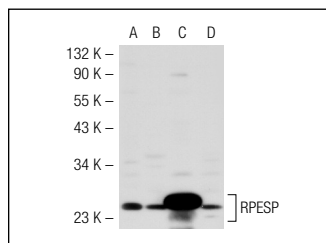
Molecular Weight of ARPE-19: 30 kDa.

Positive Controls: RPE-J cell lysate: sc-24771, Y79 cell lysate: sc-2240 or ARPE-19 whole cell lysate.

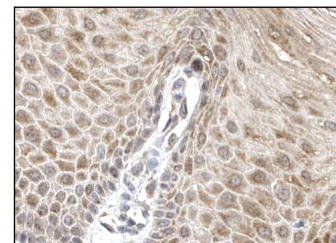
RECOMMENDED SECONDARY REAGENTS

To ensure optimal results, the following support (secondary) reagents are recommended: 1) Western Blotting: use goat anti-rabbit IgG-HRP: sc-2004 (dilution range: 1:2000-1:100,000) or Cruz Marker™ compatible goat anti-rabbit IgG-HRP: sc-2030 (dilution range: 1:2000-1:5000), Cruz Marker™ Molecular Weight Standards: sc-2035, TBS Blotto A Blocking Reagent: sc-2333 and Western Blotting Luminol Reagent: sc-2048. 2) Immunoprecipitation: use Protein A/G PLUS-Agarose: sc-2003 (0.5 ml agarose/2.0 ml). 3) Immunofluorescence: use goat anti-rabbit IgG-FITC: sc-2012 (dilution range: 1:100-1:400) or goat anti-rabbit IgG-TR: sc-2780 (dilution range: 1:100-1:400) with UltraCruz™ Mounting Medium: sc-24941. 4) Immunohistochemistry: use ImmunoCruz™: sc-2051 or ABC: sc-2018 rabbit IgG Staining Systems.

DATA



RPESP (D-20): sc-87409. Western blot analysis of RPESP expression in RPE-J (A), Y79 (B) and ARPE-19 (C) whole cell lysates and rat eye tissue extract (D).



RPESP (D-20): sc-87409. Immunoperoxidase staining of formalin fixed, paraffin-embedded human cervix and uterine tissue showing nuclear and cytoplasmic staining of squamous epithelial cells at high magnification. Kindly provided by The Swedish Human Protein Atlas (HPA) program.

RESEARCH USE

For research use only, not for use in diagnostic procedures.