

HAT1 (C-20): sc-8752

BACKGROUND

In the intact cell, DNA closely associates with histones and other nuclear proteins to form chromatin. The remodeling of chromatin is believed to be a critical component of transcriptional regulation and a major source of this remodeling is brought about by the acetylation of nucleosomal histones. Acetylation of lysine residues in the amino terminal tail domain of histone results in an allosteric change in the nucleosomal conformation and an increased accessibility to transcription factors by DNA. Conversely, the deacetylation of histones is associated with transcriptional silencing. Several mammalian proteins have been identified as nuclear histone acetylases, including GCN5, PCAF (p300/CBP associated factor), p300/CBP, HAT1, and the TFIID subunit TAF II p250. Mammalian HDAC1 (also designated HD1), HDAC2 (also designated RPD3) and HDAC3-6, have been identified as histone deacetylases.

CHROMOSOMAL LOCATION

Genetic locus: HAT1 (human) mapping to 2q31.1.

SOURCE

HAT1 (C-20) is an affinity purified goat polyclonal antibody raised against a peptide mapping at the C-terminus of HAT1 of human origin.

PRODUCT

Each vial contains 200 µg IgG in 1.0 ml of PBS with < 0.1% sodium azide and 0.1% gelatin.

Blocking peptide available for competition studies, sc-8752 P, (100 µg peptide in 0.5 ml PBS containing < 0.1% sodium azide and 0.2% BSA).

STORAGE

Store at 4° C, ****DO NOT FREEZE****. Stable for one year from the date of shipment. Non-hazardous. No MSDS required.

APPLICATIONS

HAT1 (C-20) is recommended for detection of HAT1 of human origin by Western Blotting (starting dilution 1:200, dilution range 1:100-1:1000), immunoprecipitation [1-2 µg per 100-500 µg of total protein (1 ml of cell lysate)], immunofluorescence (starting dilution 1:50, dilution range 1:50-1:500), immunohistochemistry (including paraffin-embedded sections) (starting dilution 1:50, dilution range 1:50-1:500) and solid phase ELISA (starting dilution 1:30, dilution range 1:30-1:3000).

HAT1 (C-20) is also recommended for detection of HAT1 in additional species, including equine, canine, bovine and porcine.

Suitable for use as control antibody for HAT1 siRNA (h): sc-37948, HAT1 shRNA Plasmid (h): sc-37948-SH and HAT1 shRNA (h) Lentiviral Particles: sc-37948-V.

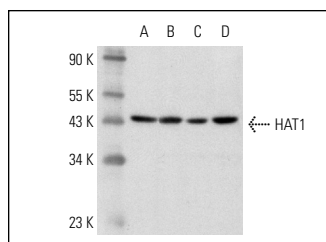
Molecular Weight of HAT1: 42 kDa.

Positive Controls: HeLa nuclear extract: sc-2120, HeLa whole cell lysate: sc-2200 or BT-20 cell lysate: sc-2223.

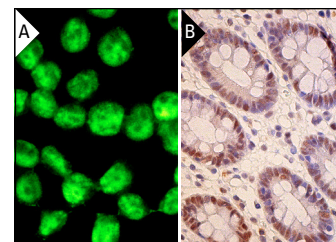
RECOMMENDED SECONDARY REAGENTS

To ensure optimal results, the following support (secondary) reagents are recommended: 1) Western Blotting: use donkey anti-goat IgG-HRP: sc-2020 (dilution range: 1:2000-1:100,000) or Cruz Marker™ compatible donkey anti-goat IgG-HRP: sc-2033 (dilution range: 1:2000-1:5000), Cruz Marker™ Molecular Weight Standards: sc-2035, TBS Blotto A Blocking Reagent: sc-2333 and Western Blotting Luminol Reagent: sc-2048. 2) Immunoprecipitation: use Protein A/G PLUS-Agarose: sc-2003 (0.5 ml agarose/2.0 ml). 3) Immunofluorescence: use donkey anti-goat IgG-FITC: sc-2024 (dilution range: 1:100-1:400) or donkey anti-goat IgG-TR: sc-2783 (dilution range: 1:100-1:400) with UltraCruz™ Mounting Medium: sc-24941. 4) Immunohistochemistry: use ImmunoCruz™: sc-2053 or ABC: sc-2023 goat IgG Staining Systems.

DATA



HAT1 (C-20): sc-8752. Western blot analysis of HAT1 expression in HeLa (A) and BT-20 (B) whole cell lysates and A-431 (C) and HeLa (D) nuclear extracts.



HAT1 (C-20): sc-8752. Immunofluorescence staining of methanol-fixed HeLa cells showing nuclear localization (A). Immunoperoxidase staining of formalin fixed, paraffin-embedded human colon tissue showing nuclear staining of glandular cells (B).

SELECT PRODUCT CITATIONS

- Miyamoto, N., et al. 2008. TIP60 is regulated by circadian transcription factor clock and is involved in cisplatin resistance. *J. Biol. Chem.* 283: 18218-18226.
- Lebel, E.A., et al. 2010. Irradiation with heavy-ion particles changes the cellular distribution of human histone acetyltransferase HAT1. *Mol. Cell. Biochem.* 339: 271-284.

RESEARCH USE

For research use only, not for use in diagnostic procedures.

PROTOCOLS

See our web site at www.scbt.com or our catalog for detailed protocols and support products.



Try **HAT1 (H-7): sc-390562** or **HAT1 (B-10): sc-376268**, our highly recommended monoclonal alternatives to HAT1 (C-20).