

# TTF-1 (N-19): sc-8761

## BACKGROUND

TTF-1 (Thyroid transcription factor-1, BCH, BHC, NK-2, Nkx2.1, Nkx2A, TEBP, TTF1) is a member of the Nkx2 family of homeodomain-containing transcription factors and regulates the transcriptional activity of thyroid-specific genes. TTF-1 is a protein that influences organogenesis and the maintenance of the differentiated phenotypes of various tissues including thyroid, lung and brain. TTF-1, which is present in the epithelium of the lung, regulates transcription of the surfactant proteins (SP) A, B and C and is essential for lung morphogenesis. In the thyroid, TTF-1 elevates the expression of thyroid specific markers, Thyroglobulin, Thyroperoxidase and thyrotropin receptors. TTF-1 interacts with SRC-1 and CBP *in vitro*.

## REFERENCES

- Guazzi, S., et al. 1990. Thyroid nuclear factor 1 (TTF-1) contains a homeodomain and displays a novel DNA binding specificity. *EMBO J.* 9: 3631-3639.
- Lazzaro, D., et al. 1991. The transcription factor TTF-1 is expressed at the onset of thyroid and lung morphogenesis and in restricted regions of the foetal brain. *Development* 113: 1093-1104.
- Lints, T.J., et al. 1993. Nkx-2.5: a novel murine homeobox gene expressed in early heart progenitor cells and their myogenic descendants. *Development* 119: 419-431.
- Bohinski, R.J., et al. 1994. The lung-specific surfactant protein B gene promoter is a target for thyroid transcription factor 1 and hepatocyte nuclear factor 3, indicating common factors for organ-specific gene expression along the foregut axis. *Mol. Cell. Biol.* 14: 5671-5681.
- Saiardi, A., et al. 1995. Cloning and sequence analysis of human thyroid transcription factor 1. *Biochim. Biophys. Acta* 1261: 307-310.
- Ikeda, K., et al. 1995. Gene structure and expression of human thyroid transcription factor-1 in respiratory epithelial cells. *J. Biol. Chem.* 270: 8108-8114.
- Bingle, C.D. 1997. Thyroid transcription factor-1. *Int. J. Biochem. Cell Biol.* 29: 1471-1473.

## CHROMOSOMAL LOCATION

Genetic locus: NKX2-1/NKX2-4 (human) mapping to 14q13.3; Nkx2-4 (mouse) mapping to 2 G2, Nkx2-1 (mouse) mapping to 12 C1.

## SOURCE

TTF-1 (N-19) is an affinity purified goat polyclonal antibody raised against a peptide mapping at the N-terminus of TTF-1 of human origin.

## PRODUCT

Each vial contains 200 µg IgG in 1.0 ml of PBS with < 0.1% sodium azide and 0.1% gelatin.

Blocking peptide available for competition studies, sc-8761 P, (100 µg peptide in 0.5 ml PBS containing < 0.1% sodium azide and 0.2% BSA).

Available as TransCruz reagent for Gel Supershift and ChIP applications, sc-8761 X, 200 µg/0.1 ml.

## APPLICATIONS

TTF-1 (N-19) is recommended for detection of TTF-1 and NKX2-4 human and mouse origin and TTF-1 of rat origin by Western Blotting (starting dilution 1:200, dilution range 1:100-1:1000), immunofluorescence (starting dilution 1:50, dilution range 1:50-1:500) and solid phase ELISA (starting dilution 1:30, dilution range 1:30-1:3000).

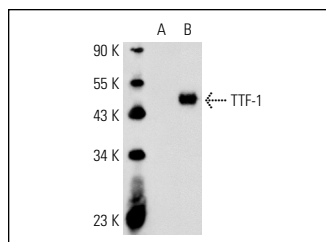
TTF-1 (N-19) is also recommended for detection of TTF-1 in additional species, including canine, bovine, porcine and avian.

TTF-1 (N-19) X TransCruz antibody is recommended for Gel Supershift and ChIP applications.

Molecular Weight of TTF-1: 38 kDa.

Positive Controls: A549 cell lysate: sc-2413 or TTF-1 (h2): 293T Lysate: sc-159187.

## DATA



TTF-1 (N-19): sc-8761. Western blot analysis of TTF-1 expression in non-transfected: sc-117752 (A) and human TTF-1 transfected: sc-159187 (B) 293T whole cell lysates.

## STORAGE

Store at 4° C, \*\*DO NOT FREEZE\*\*. Stable for one year from the date of shipment. Non-hazardous. No MSDS required.

## RESEARCH USE

For research use only, not for use in diagnostic procedures.

## PROTOCOLS

See our web site at [www.scbt.com](http://www.scbt.com) or our catalog for detailed protocols and support products.

**MONOS**  
Satisfaction  
Guaranteed

Try **TTF-1 (8G7G3/1): sc-53136** or **TTF-1 (F-12): sc-25331**, our highly recommended monoclonal alternatives to TTF-1 (N-19). Also, for AC, HRP, FITC, PE, Alexa Fluor<sup>®</sup> 488 and Alexa Fluor<sup>®</sup> 647 conjugates, see **TTF-1 (8G7G3/1): sc-53136**.