

COLEC10 (C-15): sc-87643

BACKGROUND

COLEC10 (collectin-34 or collectin liver protein 1) is a member of the C-lectin COLEC10/COLEC11 family. The COLEC10 protein, which has a C-type lectin domain and a collagen-like domain, is a secreted and cytoplasmic protein that binds to a number of sugars. COLEC10 is a serum circulating mannose-binding lectin which likely functions as part of the innate immune system. COLEC10 is expressed at varying levels depending on the tissue. COLEC10 is highly expressed in liver, placenta and adrenal gland, while moderately to weakly expressed in small intestine, lung, stomach, prostate, trachea and spleen.

REFERENCES

- Ohtani, K., et al. 1999. Molecular cloning of a novel human collectin from liver (CL-L1). *J. Biol. Chem.* 274: 13681-13689.
- Kawai, T., et al. 2002. Molecular cloning of mouse collectin liver 1. *Biosci. Biotechnol. Biochem.* 66: 2134-2145.
- Clark, H.F., et al. 2003. The secreted protein discovery initiative (SPDI), a large-scale effort to identify novel human secreted and transmembrane proteins: a bioinformatics assessment. *Genome Res.* 13: 2265-2270.
- Wakamiya, N., et al. 2004. Collectin family as a host defense lectin. *Hokkaido Igaku Zasshi* 79: 3-7.
- Donders, G.G., et al. 2008. Mannose-binding lectin gene polymorphism and resistance to therapy in women with recurrent vulvovaginal candidiasis. *BJOG* 115: 1225-1231.
- Dumestre-Perard, C., et al. 2008. *Aspergillus conidia* activate the complement by the mannan-binding lectin C2 bypass mechanism. *J. Immunol.* 181: 7100-7105.
- Held, K., et al. 2008. Increased susceptibility of complement factor B/C2 double knockout mice and mannan-binding lectin knockout mice to systemic infection with *Candida albicans*. *Mol. Immunol.* 45: 3934-3941.

CHROMOSOMAL LOCATION

Genetic locus: COLEC10 (human) mapping to 8q24.12; Colec10 (mouse) mapping to 15 D1.

SOURCE

COLEC10 (C-15) is an affinity purified goat polyclonal antibody raised against a peptide mapping near the C-terminus of COLEC10 of human origin.

PRODUCT

Each vial contains 200 µg IgG in 1.0 ml of PBS with < 0.1% sodium azide and 0.1% gelatin.

Blocking peptide available for competition studies, sc-87643 P, (100 µg peptide in 0.5 ml PBS containing < 0.1% sodium azide and 0.2% BSA).

STORAGE

Store at 4° C, ****DO NOT FREEZE****. Stable for one year from the date of shipment. Non-hazardous. No MSDS required.

APPLICATIONS

COLEC10 (C-15) is recommended for detection of COLEC10 of mouse, rat and human origin by Western Blotting (starting dilution 1:200, dilution range 1:100-1:1000), immunoprecipitation [1-2 µg per 100-500 µg of total protein (1 ml of cell lysate)], immunofluorescence (starting dilution 1:50, dilution range 1:50-1:500) and solid phase ELISA (starting dilution 1:30, dilution range 1:30-1:3000).

COLEC10 (C-15) is also recommended for detection of COLEC10 in additional species, including equine, canine, bovine and porcine.

Suitable for use as control antibody for COLEC10 siRNA (h): sc-77579, COLEC10 siRNA (m): sc-142478, COLEC10 shRNA Plasmid (h): sc-77579-SH, COLEC10 shRNA Plasmid (m): sc-142478-SH, COLEC10 shRNA (h) Lentiviral Particles: sc-77579-V and COLEC10 shRNA (m) Lentiviral Particles: sc-142478-V.

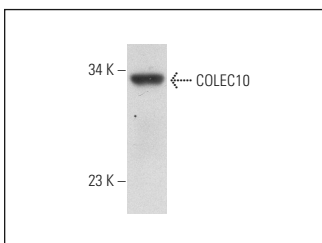
Molecular Weight of COLEC10: 31 kDa.

Positive Controls: PC-12 cell lysate: sc-2250.

RECOMMENDED SECONDARY REAGENTS

To ensure optimal results, the following support (secondary) reagents are recommended: 1) Western Blotting: use donkey anti-goat IgG-HRP: sc-2020 (dilution range: 1:2000-1:100,000) or Cruz Marker™ compatible donkey anti-goat IgG-HRP: sc-2033 (dilution range: 1:2000-1:5000), Cruz Marker™ Molecular Weight Standards: sc-2035, TBS Blotto A Blocking Reagent: sc-2333 and Western Blotting Luminol Reagent: sc-2048. 2) Immunoprecipitation: use Protein A/G PLUS-Agarose: sc-2003 (0.5 ml agarose/2.0 ml). 3) Immunofluorescence: use donkey anti-goat IgG-FITC: sc-2024 (dilution range: 1:100-1:400) or donkey anti-goat IgG-TR: sc-2783 (dilution range: 1:100-1:400) with UltraCruz™ Mounting Medium: sc-24941.

DATA



COLEC10 (C-15): sc-87643. Western blot analysis of COLEC10 expression in PC-12 whole cell lysate.

RESEARCH USE

For research use only, not for use in diagnostic procedures.

PROTOCOLS

See our web site at www.scbt.com or our catalog for detailed protocols and support products.