

CYHR1 (G-14): sc-87664

BACKGROUND

CYHR1 (cysteine/histidine-rich 1), also known as CHRP, is a 362 amino acid protein belonging to the CYHR1 family. CYHR1 exhibits prominent perinuclear and cytoplasmic localization and contains one RING-type zinc finger and a TRAF-type zinc finger. Existing as four alternatively spliced isoforms, CYHR1 is encoded by a gene that maps to human chromosome 8q24.3. Consisting of nearly 146 million base pairs, chromosome 8 encodes over 800 genes and is associated with a variety of diseases and malignancies. Schizophrenia, bipolar disorder, trisomy 8, Pfeiffer syndrome, congenital hypothyroidism, Waardenburg syndrome and some leukemias and lymphomas are thought to occur as a result of defects in specific genes that map to chromosome 8.

REFERENCES

- Menon, R.P., Strom, M. and Hughes, R.C. 2000. Interaction of a novel cysteine and histidine-rich cytoplasmic protein with galectin-3 in a carbohydrate-independent manner. *FEBS Lett.* 470: 227-231.
- Kashino, G., Kodama, S., Suzuki, K., Oshimura, M. and Watanabe, M. 2001. Preferential expression of an intact WRN gene in Werner syndrome cell lines in which a normal chromosome 8 has been introduced. *Biochem. Biophys. Res. Commun.* 289: 111-115.
- Selicorni, A., Gueneri, S., Ratti, A. and Pizzuti, A. 2002. Cytogenetic mapping of a novel locus for type II Waardenburg syndrome. *Hum. Genet.* 110: 64-67.
- McQueen, M.B., Devlin, B., Faraone, S.V., Nimgaonkar, V.L., Sklar, P., Smoller, J.W., Abou Jamra, R., Albus, M., Bacanu, S.A., Baron, M., Barrett, T.B., Berrettini, W., Blacker, D., Byerley, W., Cichon, S., Coryell, W., et al. 2005. Combined analysis from eleven linkage studies of bipolar disorder provides strong evidence of susceptibility loci on chromosomes 6q and 8q. *Am. J. Hum. Genet.* 77: 582-595.
- Mossafa, H., Damotte, D., Jenabian, A., Delarue, R., Vincenneau, A., Amouroux, I., Jeandel, R., Khoury, E., Martelli, J.M., Samson, T., Tapia, S., Flandrin, G. and Troussard, X. 2006. Non-Hodgkin's lymphomas with Burkitt-like cells are associated with c-Myc amplification and poor prognosis. *Leuk. Lymphoma* 47: 1885-1893.

CHROMOSOMAL LOCATION

Genetic locus: CYHR1 (human) mapping to 8q24.3; Cyhr1 (mouse) mapping to 15 D3.

SOURCE

CYHR1 (G-14) is an affinity purified goat polyclonal antibody raised against a peptide mapping within an internal region of CYHR1 of human origin.

PRODUCT

Each vial contains 200 µg IgG in 1.0 ml of PBS with < 0.1% sodium azide and 0.1% gelatin.

Blocking peptide available for competition studies, sc-87664 P, (100 µg peptide in 0.5 ml PBS containing < 0.1% sodium azide and 0.2% BSA).

APPLICATIONS

CYHR1 (G-14) is recommended for detection of CYHR1 of mouse, rat and human origin by Western Blotting (starting dilution 1:200, dilution range 1:100-1:1000), immunoprecipitation [1-2 µg per 100-500 µg of total protein (1 ml of cell lysate)], immunofluorescence (starting dilution 1:50, dilution range 1:50-1:500) and solid phase ELISA (starting dilution 1:30, dilution range 1:30-1:3000).

CYHR1 (G-14) is also recommended for detection of CYHR1 in additional species, including bovine.

Suitable for use as control antibody for CYHR1 siRNA (h): sc-77842, CYHR1 siRNA (m): sc-142662, CYHR1 shRNA Plasmid (h): sc-77842-SH, CYHR1 shRNA Plasmid (m): sc-142662-SH, CYHR1 shRNA (h) Lentiviral Particles: sc-77842-V and CYHR1 shRNA (m) Lentiviral Particles: sc-142662-V.

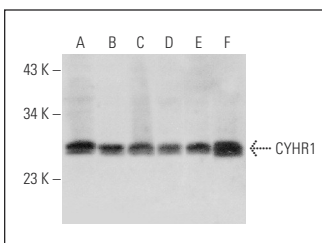
Molecular Weight of CYHR1: 40 kDa.

Positive Controls: HL-60 whole cell lysate: sc-2209, HeLa whole cell lysate: sc-2200 or Jurkat whole cell lysate: sc-2204.

RECOMMENDED SECONDARY REAGENTS

To ensure optimal results, the following support (secondary) reagents are recommended: 1) Western Blotting: use donkey anti-goat IgG-HRP: sc-2020 (dilution range: 1:2000-1:100,000) or Cruz Marker™ compatible donkey anti-goat IgG-HRP: sc-2033 (dilution range: 1:2000-1:5000), Cruz Marker™ Molecular Weight Standards: sc-2035, TBS Blotto A Blocking Reagent: sc-2333 and Western Blotting Luminol Reagent: sc-2048. 2) Immunoprecipitation: use Protein A/G PLUS-Agarose: sc-2003 (0.5 ml agarose/2.0 ml). 3) Immunofluorescence: use donkey anti-goat IgG-FITC: sc-2024 (dilution range: 1:100-1:400) or donkey anti-goat IgG-TR: sc-2783 (dilution range: 1:100-1:400) with UltraCruz™ Mounting Medium: sc-24941.

DATA



CYHR1 (G-14): sc-87664. Western blot analysis of CYHR1 expression in HL-60 (A), U-937 (B), MDA-MB-435S (C), HEK293 (D), HeLa (E) and Jurkat (F) whole cell lysates.

STORAGE

Store at 4° C, **DO NOT FREEZE**. Stable for one year from the date of shipment. Non-hazardous. No MSDS required.

RESEARCH USE

For research use only, not for use in diagnostic procedures.