

DEPTOR (N-14): sc-87692

BACKGROUND

DEPTOR (DEP domain containing MTOR-interacting protein), also known as DEP6 or DEPDC6 (DEP domain-containing protein 6), is a 409 amino acid protein that negatively regulates mTORC1 and mTORC2 pathways. DEPTOR interacts with FRAP via its PDZ domain, and undergoes post-translational phosphorylation. Containing two DEP domains and one PDZ (DHR) domain, DEPTOR is encoded by a gene that maps to human chromosome 8q24.12. Chromosome 8 consists of nearly 146 million base pairs, encodes over 800 genes and is associated with a variety of diseases and malignancies. Schizophrenia, bipolar disorder, Trisomy 8, Pfeiffer syndrome, congenital hypothyroidism, Waardenburg syndrome and some leukemias and lymphomas are thought to occur as a result of defects in specific genes that map to chromosome 8.

CHROMOSOMAL LOCATION

Genetic locus: DEPTOR (human) mapping to 8q24.12; Deptor (mouse) mapping to 15 D1.

SOURCE

DEPTOR (N-14) is an affinity purified goat polyclonal antibody raised against a peptide mapping near the N-terminus of DEPTOR of human origin.

PRODUCT

Each vial contains 200 µg IgG in 1.0 ml of PBS with < 0.1% sodium azide and 0.1% gelatin.

Blocking peptide available for competition studies, sc-87692 P, (100 µg peptide in 0.5 ml PBS containing < 0.1% sodium azide and 0.2% BSA).

STORAGE

Store at 4° C, ****DO NOT FREEZE****. Stable for one year from the date of shipment. Non-hazardous. No MSDS required.

APPLICATIONS

DEPTOR (N-14) is recommended for detection of DEPTOR of mouse, rat and human origin by Western Blotting (starting dilution 1:200, dilution range 1:100-1:1000), immunoprecipitation [1-2 µg per 100-500 µg of total protein (1 ml of cell lysate)], immunofluorescence (starting dilution 1:50, dilution range 1:50-1:500), immunohistochemistry (including paraffin-embedded sections) (starting dilution 1:50, dilution range 1:50-1:500) and solid phase ELISA (starting dilution 1:30, dilution range 1:30-1:3000); non cross-reactive with DEPDC5.

Suitable for use as control antibody for DEPTOR siRNA (h): sc-77660, DEPTOR siRNA (m): sc-143009, DEPTOR shRNA Plasmid (h): sc-77660-SH, DEPTOR shRNA Plasmid (m): sc-143009-SH, DEPTOR shRNA (h) Lentiviral Particles: sc-77660-V and DEPTOR shRNA (m) Lentiviral Particles: sc-143009-V.

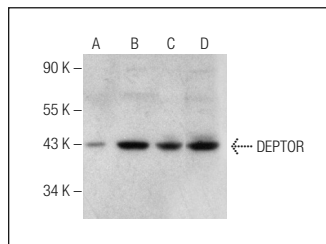
Molecular Weight of DEPTOR: 48 kDa.

Positive Controls: DEPTOR (m2): 293T Lysate: sc-178518, U266 whole cell lysate: sc-364800 or Ramos cell lysate: sc-2216.

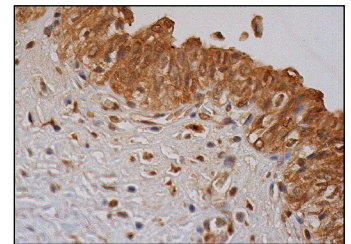
RECOMMENDED SECONDARY REAGENTS

To ensure optimal results, the following support (secondary) reagents are recommended: 1) Western Blotting: use donkey anti-goat IgG-HRP: sc-2020 (dilution range: 1:2000-1:100,000) or Cruz Marker™ compatible donkey anti-goat IgG-HRP: sc-2033 (dilution range: 1:2000-1:5000), Cruz Marker™ Molecular Weight Standards: sc-2035, TBS Blotto A Blocking Reagent: sc-2333 and Western Blotting Luminol Reagent: sc-2048. 2) Immunoprecipitation: use Protein A/G PLUS-Agarose: sc-2003 (0.5 ml agarose/2.0 ml). 3) Immunofluorescence: use donkey anti-goat IgG-FITC: sc-2024 (dilution range: 1:100-1:400) or donkey anti-goat IgG-TR: sc-2783 (dilution range: 1:100-1:400) with UltraCruz™ Mounting Medium: sc-24941. 4) Immunohistochemistry: use ImmunoCruz™: sc-2053 or ABC: sc-2023 goat IgG Staining Systems.

DATA



DEPTOR (N-14): sc-87692. Western blot analysis of DEPTOR expression in non-transfected 293T: sc-117752 (A), mouse DEPTOR transfected 293T: sc-178518 (B), Ramos (C) and U266 (D) whole cell lysates.



DEPTOR (N-14): sc-87692. Immunoperoxidase staining of formalin fixed, paraffin-embedded human urinary bladder tissue showing cytoplasmic and nuclear staining of urothelial cells.

RESEARCH USE

For research use only, not for use in diagnostic procedures.

PROTOCOLS

See our web site at www.scbt.com or our catalog for detailed protocols and support products.

MONOS
Satisfaction
Guaranteed

Try **DEPTOR (A-3): sc-398169** or **DEPTOR (E-2): sc-514608**, our highly recommended monoclonal alternatives to DEPTOR (N-14).