

DSCD75 (A-12): sc-87700

BACKGROUND

Mesenchymal stem cell protein DSCD75, also known as UPF0670 protein C8orf55, is a 208 amino acid secreted protein that belongs to the UPF0670 family. The gene encoding DSCD75 maps to human chromosome 8, which consists of nearly 146 million base pairs, encodes over 800 genes and is associated with a variety of diseases and malignancies. Schizophrenia, bipolar disorder, Trisomy 8, Pfeiffer syndrome, congenital hypothyroidism, Waardenburg syndrome and some leukemias and lymphomas are thought to occur as a result of defects in specific genes that map to chromosome 8.

REFERENCES

1. Kashino, G., Kodama, S., Suzuki, K., Oshimura, M. and Watanabe, M. 2001. Preferential expression of an intact WRN gene in Werner syndrome cell lines in which a normal chromosome 8 has been introduced. *Biochem. Biophys. Res. Commun.* 289: 111-115.
2. Selicorni, A., Gueneri, S., Ratti, A. and Pizzuti, A. 2002. Cytogenetic mapping of a novel locus for type II Waardenburg syndrome. *Hum. Genet.* 110: 64-67.
3. McQueen, M.B., Devlin, B., Faraone, S.V., Nimgaonkar, V.L., Sklar, P., Smoller, J.W., Abou Jamra, R., Albus, M., Bacanu, S.A., Baron, M., Barrett, T.B., Berrettini, W., Blacker, D., Byerley, W., Cichon, S., et al. 2005. Combined analysis from eleven linkage studies of bipolar disorder provides strong evidence of susceptibility loci on chromosomes 6q and 8q. *Am. J. Hum. Genet.* 77: 582-595.
4. Agrelo, R., Cheng, W.H., Setien, F., Roper, S., Espada, J., Fraga, M.F., Herranz, M., Paz, M.F., Sanchez-Cespedes, M., Artiga, M.J., Guerrero, D., Castells, A., von Kobbe, C., Bohr, V.A. and Esteller, M. 2006. Epigenetic inactivation of the premature aging Werner syndrome gene in human cancer. *Proc. Natl. Acad. Sci. USA* 103: 8822-8827.
5. Mossafa, H., Damotte, D., Jenabian, A., Delarue, R., Vincenneau, A., Amouroux, I., Jeandel, R., Khoury, E., Martelli, J.M., Samson, T., Tapia, S., Flandrin, G. and Troussard, X. 2006. Non-Hodgkin's lymphomas with Burkitt-like cells are associated with c-Myc amplification and poor prognosis. *Leuk. Lymphoma* 47: 1885-1893.
6. Burkard, T.R., Planyavsky, M., Kaupe, I., Breitwieser, F.P., Bürckstümmer, T., Bennett, K.L., Superti-Furga, G. and Colinge, J. 2011. Initial characterization of the human central proteome. *BMC Syst. Biol.* 5: 17.

CHROMOSOMAL LOCATION

Genetic locus: THEM6 (human) mapping to 8q24.3; Them6 (mouse) mapping to 15 D3.

SOURCE

DSCD75 (A-12) is an affinity purified rabbit polyclonal antibody raised against a peptide mapping within an internal region of DSCD75 of human origin.

STORAGE

Store at 4° C, **DO NOT FREEZE**. Stable for one year from the date of shipment. Non-hazardous. No MSDS required.

PRODUCT

Each vial contains 100 µg IgG in 1.0 ml of PBS with < 0.1% sodium azide and 0.1% gelatin.

Blocking peptide available for competition studies, sc-87700 P, (100 µg peptide in 0.5 ml PBS containing < 0.1% sodium azide and 0.2% BSA).

APPLICATIONS

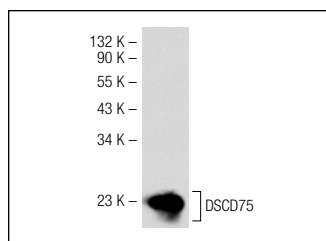
DSCD75 (A-12) is recommended for detection of DSCD75 of mouse, rat and human origin by Western Blotting (starting dilution 1:200, dilution range 1:100-1:1000), immunoprecipitation [1-2 µg per 100-500 µg of total protein (1 ml of cell lysate)], immunofluorescence (starting dilution 1:50, dilution range 1:50-1:500) and solid phase ELISA (starting dilution 1:30, dilution range 1:30-1:3000).

Suitable for use as control antibody for DSCD75 siRNA (h): sc-77625, DSCD75 siRNA (m): sc-143174, DSCD75 shRNA Plasmid (h): sc-77625-SH, DSCD75 shRNA Plasmid (m): sc-143174-SH, DSCD75 shRNA (h) Lentiviral Particles: sc-77625-V and DSCD75 shRNA (m) Lentiviral Particles: sc-143174-V.

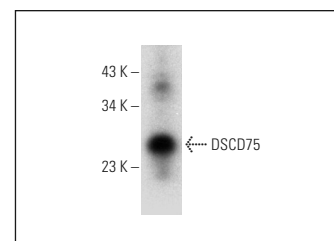
Molecular Weight of DSCD75: 24 kDa.

Positive Controls: mouse brain extract: sc-2253, human cerebellum tissue extract or rat small intestine extract: sc-364811.

DATA



DSCD75 (A-12): sc-87700. Western blot analysis of DSCD75 expression in rat small intestine tissue extract.



DSCD75 (A-12): sc-87700. Western blot analysis of DSCD75 expression in human cerebellum tissue extract.

RESEARCH USE

For research use only, not for use in diagnostic procedures.

PROTOCOLS

See our web site at www.scbt.com or our catalog for detailed protocols and support products.