

## FBXO25 (C-19): sc-87736

### BACKGROUND

FBXO25 (F-box only protein 25), also known as FBX25, is a 367 amino acid protein that contains one C-terminal F-box domain and belongs to the FBX class of the F-box family of proteins. F-box proteins are critical components of the SCF (Skp1-CUL-1-F-box protein) type E3 ubiquitin ligase complex and are involved in substrate recognition and recruitment for ubiquitination. They are members of a larger family of proteins that are involved in the regulation of a wide variety of cellular processes (including the cell cycle, immune response, signaling cascades and developmental processes) through the targeting of proteins, such as cyclins, cyclin-dependent kinase inhibitors,  $\kappa$ B- $\alpha$  and  $\beta$ -catenin, for degradation by the proteasome after ubiquitination. Expressed at high levels in brain, FBXO25 localizes predominantly to the nucleus and directly interacts with Skp1 p19 and CUL-1. Disruption of the gene encoding FBXO25 can lead to X-linked mental retardation.

### CHROMOSOMAL LOCATION

Genetic locus: FBXO25 (human) mapping to 8p23.3; Fbxo25 (mouse) mapping to 8 A1.1.

### SOURCE

FBXO25 (C-19) is an affinity purified rabbit polyclonal antibody raised against a peptide mapping near the C-terminus of FBXO25 of human origin.

### PRODUCT

Each vial contains 100  $\mu$ g IgG in 1.0 ml of PBS with < 0.1% sodium azide and 0.1% gelatin.

Blocking peptide available for competition studies, sc-87736 P, (100  $\mu$ g peptide in 0.5 ml PBS containing < 0.1% sodium azide and 0.2% BSA).

### RESEARCH USE

For research use only, not for use in diagnostic procedures.

### APPLICATIONS

FBXO25 (C-19) is recommended for detection of FBXO25 of mouse, rat and human origin by Western Blotting (starting dilution 1:200, dilution range 1:100-1:1000), immunoprecipitation [1-2  $\mu$ g per 100-500  $\mu$ g of total protein (1 ml of cell lysate)], immunofluorescence (starting dilution 1:50, dilution range 1:50-1:500) and solid phase ELISA (starting dilution 1:30, dilution range 1:30-1:3000); non cross-reactive with other FBXO family members.

FBXO25 (C-19) is also recommended for detection of FBXO25 in additional species, including equine, canine and bovine.

Suitable for use as control antibody for FBXO25 siRNA (h): sc-77570, FBXO25 siRNA (m): sc-145112, FBXO25 shRNA Plasmid (h): sc-77570-SH, FBXO25 shRNA Plasmid (m): sc-145112-SH, FBXO25 shRNA (h) Lentiviral Particles: sc-77570-V and FBXO25 shRNA (m) Lentiviral Particles: sc-145112-V.

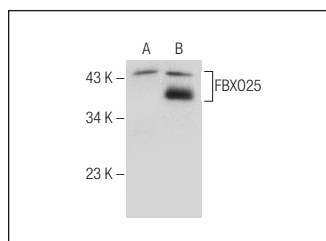
Molecular Weight of FBXO25: 42 kDa.

Positive Controls: FBXO25 (h): 293T Lysate: sc-116139 or COLO 320 HSR whole cell lysate.

### RECOMMENDED SECONDARY REAGENTS

To ensure optimal results, the following support (secondary) reagents are recommended: 1) Western Blotting: use goat anti-rabbit IgG-HRP: sc-2004 (dilution range: 1:2000-1:100,000) or Cruz Marker<sup>™</sup> compatible goat anti-rabbit IgG-HRP: sc-2030 (dilution range: 1:2000-1:5000), Cruz Marker<sup>™</sup> Molecular Weight Standards: sc-2035, TBS Blotto A Blocking Reagent: sc-2333 and Western Blotting Luminol Reagent: sc-2048. 2) Immunoprecipitation: use Protein A/G PLUS-Agarose: sc-2003 (0.5 ml agarose/2.0 ml). 3) Immunofluorescence: use goat anti-rabbit IgG-FITC: sc-2012 (dilution range: 1:100-1:400) or goat anti-rabbit IgG-TR: sc-2780 (dilution range: 1:100-1:400) with UltraCruz<sup>™</sup> Mounting Medium: sc-24941.

### DATA



FBXO25 (C-19): sc-87736. Western blot analysis of FBXO25 expression in non-transfected: sc-117752 (A) and human FBXO25 transfected: sc-116139 (B) 293T whole cell lysates.

### STORAGE

Store at 4° C, **\*\*DO NOT FREEZE\*\***. Stable for one year from the date of shipment. Non-hazardous. No MSDS required.

### PROTOCOLS

See our web site at [www.scbt.com](http://www.scbt.com) or our catalog for detailed protocols and support products.

**MONOS**  
Satisfaction  
Guaranteed

Try **FBXO25 (G-5): sc-390219** or **FBXO25 (F9-3): sc-100735**, our highly recommended monoclonal alternatives to FBXO25 (C-19).