

KIAA1429 (N-14): sc-87794

BACKGROUND

KIAA1429, also known as MSTP054 or fSAP121, is a 1,812 amino acid protein that is located in the nucleus and is a member of the vir family. Post-translationally phosphorylated at multiple serine and threonine residues, as well as acetylated at alanine 2, KIAA1429 is thought to be involved in the regulation of mRNA splicing events. Existing as four alternatively spliced isoforms, the gene encoding KIAA1429 maps to human chromosome 8. Chromosome 8 consists of nearly 146 million base pairs, encodes over 800 genes and is associated with a variety of diseases and malignancies. Schizophrenia, bipolar disorder, Trisomy 8, Pfeiffer syndrome, congenital hypothyroidism, Waardenburg syndrome and some leukemias and lymphomas are thought to occur as a result of defects in specific genes that map to chromosome 8.

REFERENCES

- Nagase, T., Kikuno, R., Ishikawa, K.I., Hirosawa, M. and Ohara, O. 2000. Prediction of the coding sequences of unidentified human genes. XVI. The complete sequences of 150 new cDNA clones from brain which code for large proteins *in vitro*. *DNA Res.* 7: 65-73.
- Kashino, G., Kodama, S., Suzuki, K., Oshimura, M. and Watanabe, M. 2001. Preferential expression of an intact WRN gene in Werner syndrome cell lines in which a normal chromosome 8 has been introduced. *Biochem. Biophys. Res. Commun.* 289: 111-115.
- Niessen, M., Schneiter, R. and Nothiger, R. 2001. Molecular identification of virilizer, a gene required for the expression of the sex-determining gene Sex-lethal in *Drosophila melanogaster*. *Genetics* 157: 679-688.
- Selicorni, A., Gueneri, S., Ratti, A. and Pizzuti, A. 2002. Cytogenetic mapping of a novel locus for type II Waardenburg syndrome. *Hum. Genet.* 110: 64-67.
- Beausoleil, S.A., Jedrychowski, M., Schwartz, D., Elias, J.E., Villén, J., Li, J., Cohn, M.A., Cantley, L.C. and Gygi, S.P. 2004. Large-scale characterization of HeLa cell nuclear phosphoproteins. *Proc. Natl. Acad. Sci. USA* 101: 12130-12135.

CHROMOSOMAL LOCATION

Genetic locus: KIAA1429 (human) mapping to 8q22.1; 1110037F02Rik (mouse) mapping to 4 A1.

SOURCE

KIAA1429 (N-14) is an affinity purified rabbit polyclonal antibody raised against a peptide mapping at the N-terminus of KIAA1429 of human origin.

PRODUCT

Each vial contains 100 µg IgG in 1.0 ml of PBS with < 0.1% sodium azide and 0.1% gelatin.

Blocking peptide available for competition studies, sc-87794 P, (100 µg peptide in 0.5 ml PBS containing < 0.1% sodium azide and 0.2% BSA).

RESEARCH USE

For research use only, not for use in diagnostic procedures.

APPLICATIONS

KIAA1429 (N-14) is recommended for detection of KIAA1429 of human origin, 1110037F02Rik of mouse origin and the corresponding rat homolog by Western Blotting (starting dilution 1:200, dilution range 1:100-1:1000), immunoprecipitation [1-2 µg per 100-500 µg of total protein (1 ml of cell lysate)], immunofluorescence (starting dilution 1:50, dilution range 1:50-1:500) and solid phase ELISA (starting dilution 1:30, dilution range 1:30-1:3000).

KIAA1429 (N-14) is also recommended for detection of KIAA1429 in additional species, including equine and bovine.

Suitable for use as control antibody for KIAA1429 siRNA (h): sc-77700, 1110037F02Rik siRNA (m): sc-108181, KIAA1429 shRNA Plasmid (h): sc-77700-SH, 1110037F02Rik shRNA Plasmid (m): sc-108181-SH, KIAA1429 shRNA (h) Lentiviral Particles: sc-77700-V and 1110037F02Rik shRNA (m) Lentiviral Particles: sc-108181-V.

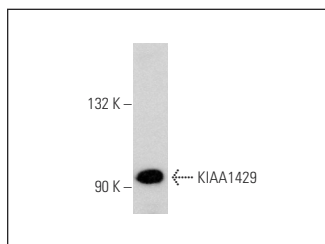
Molecular Weight of KIAA1429 isoforms: 129/154/201/202 kDa.

Positive Controls: HeLa nuclear extract: sc-2120.

RECOMMENDED SECONDARY REAGENTS

To ensure optimal results, the following support (secondary) reagents are recommended: 1) Western Blotting: use goat anti-rabbit IgG-HRP: sc-2004 (dilution range: 1:2000-1:100,000) or Cruz Marker™ compatible goat anti-rabbit IgG-HRP: sc-2030 (dilution range: 1:2000-1:5000), Cruz Marker™ Molecular Weight Standards: sc-2035, TBS Blotto A Blocking Reagent: sc-2333 and Western Blotting Luminol Reagent: sc-2048. 2) Immunoprecipitation: use Protein A/G PLUS-Agarose: sc-2003 (0.5 ml agarose/2.0 ml). 3) Immunofluorescence: use goat anti-rabbit IgG-FITC: sc-2012 (dilution range: 1:100-1:400) or goat anti-rabbit IgG-TR: sc-2780 (dilution range: 1:100-1:400) with UltraCruz™ Mounting Medium: sc-24941.

DATA



KIAA1429 (N-14): sc-87794. Western blot analysis of KIAA1429 expression in HeLa nuclear extract.

STORAGE

Store at 4° C, **DO NOT FREEZE**. Stable for one year from the date of shipment. Non-hazardous. No MSDS required.

PROTOCOLS

See our web site at www.scbt.com or our catalog for detailed protocols and support products.