

LOC643514 (N-17): sc-87848

BACKGROUND

Made up of nearly 146 million bases, chromosome 8 encodes about 800 genes. Translocation of portions of chromosome 8 with amplifications of the c-Myc gene are found in some leukemias and lymphomas, and typically associated with a poor prognosis. Portions of chromosome 8 have been linked to schizophrenia and bipolar disorder. Trisomy 8, also known as Warkany syndrome 2, most often results in early miscarriage but is occasionally seen in a mosaic form in surviving patients who suffer to a varying degree from a number of symptoms including retarded mental and motor development, and certain facial and developmental defects. WRN is a DNA helicase encoded by chromosome 8 and shown defective in those with the early aging disorder Werner syndrome. Chromosome 8 is also associated with Pfeiffer syndrome, congenital hypothyroidism and Waardenburg syndrome. The LOC643514 gene product has been provisionally designated LOC643514 pending further characterization.

REFERENCES

- Wildenauer, D.B. and Schwab, S.G. 1999. Chromosomes 8 and 10 workshop. *Am. J. Med. Genet.* 88: 239-243.
- Kashino, G., Kodama, S., Suzuki, K., Oshimura, M. and Watanabe, M. 2001. Preferential expression of an intact WRN gene in Werner syndrome cell lines in which a normal chromosome 8 has been introduced. *Biochem. Biophys. Res. Commun.* 289: 111-115.
- Selicorni, A., Gueneri, S., Ratti, A. and Pizzuti, A. 2002. Cytogenetic mapping of a novel locus for type II Waardenburg syndrome. *Hum. Genet.* 110: 64-67.
- McQueen, M.B., Devlin, B., Faraone, S.V., Nimgaonkar, V.L., Sklar, P., Smoller, J.W., Abou Jamra, R., Albus, M., Bacanu, S.A., Baron, M., Barrett, T.B., Berrettini, W., Blacker, D., Byerley, W., Cichon, S., et al. 2005. Combined analysis from eleven linkage studies of bipolar disorder provides strong evidence of susceptibility loci on chromosomes 6q and 8q. *Am. J. Hum. Genet.* 77: 582-595.
- Agrelo, R., Cheng, W.H., Setien, F., Roper, S., Espada, J., Fraga, M.F., Herranz, M., Paz, M.F., Sanchez-Cespedes, M., Artiga, M.J., Guerrero, D., Castells, A., von Kobbe, C., Bohr, V.A. and Esteller, M. 2006. Epigenetic inactivation of the premature aging Werner syndrome gene in human cancer. *Proc. Natl. Acad. Sci USA* 103: 8822-8827.
- Mossafa, H., Damotte, D., Jenabian, A., Delarue, R., Vincenneau, A., Amouroux, I., Jeandel, R., Khoury, E., Martelli, J.M., Samson, T., Tapia, S., Flandrin, G. and Troussard, X. 2006. Non-Hodgkin's lymphomas with Burkitt-like cells are associated with c-Myc amplification and poor prognosis. *Leuk. Lymphoma* 47: 1885-1893.
- Nusbaum, C., Mikkelsen, T.S., Zody, M.C., Asakawa, S., Taudien, S., Garber, M., Kodira, C.D., Schueler, M.G., Shimizu, A., Whittaker, C.A., Chang, J.L., et al. 2006. DNA sequence and analysis of human chromosome 8. *Nature* 439: 331-335.

STORAGE

Store at 4° C, ****DO NOT FREEZE****. Stable for one year from the date of shipment. Non-hazardous. No MSDS required.

SOURCE

LOC643514 (N-17) is an affinity purified rabbit polyclonal antibody raised against a peptide mapping near the N-terminus of LOC643514 of human origin.

PRODUCT

Each vial contains 100 µg IgG in 1.0 ml of PBS with < 0.1% sodium azide and 0.1% gelatin.

Blocking peptide available for competition studies, sc-87848 P, (100 µg peptide in 0.5 ml PBS containing < 0.1% sodium azide and 0.2% BSA).

APPLICATIONS

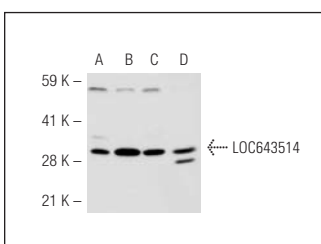
LOC643514 (N-17) is recommended for detection of LOC643514 of human origin by Western Blotting (starting dilution 1:200, dilution range 1:100-1:1000), immunoprecipitation [1-2 µg per 100-500 µg of total protein (1 ml of cell lysate)], immunofluorescence (starting dilution 1:50, dilution range 1:50-1:500) and solid phase ELISA (starting dilution 1:30, dilution range 1:30-1:3000).

Positive Controls: HEK293 whole cell lysate: sc-45136, HeLa whole cell lysate: sc-2200 or HL-60 whole cell lysate: sc-2209.

RECOMMENDED SECONDARY REAGENTS

To ensure optimal results, the following support (secondary) reagents are recommended: 1) Western Blotting: use goat anti-rabbit IgG-HRP: sc-2004 (dilution range: 1:2000-1:100,000) or Cruz Marker™ compatible goat anti-rabbit IgG-HRP: sc-2030 (dilution range: 1:2000-1:5000), Cruz Marker™ Molecular Weight Standards: sc-2035, TBS Blotto A Blocking Reagent: sc-2333 and Western Blotting Luminol Reagent: sc-2048. 2) Immunoprecipitation: use Protein A/G PLUS-Agarose: sc-2003 (0.5 ml agarose/2.0 ml). 3) Immunofluorescence: use goat anti-rabbit IgG-FITC: sc-2012 (dilution range: 1:100-1:400) or goat anti-rabbit IgG-TR: sc-2780 (dilution range: 1:100-1:400) with UltraCruz™ Mounting Medium: sc-24941.

DATA



LOC643514 (N-17): sc-87848. Western blot analysis of LOC643514 expression in HeLa (A), Caki-1 (B), JEG-3 (C) and MIA PaCa-2 (D) whole cell lysates.

RESEARCH USE

For research use only, not for use in diagnostic procedures.