

LOC728587 (P-12): sc-87897

BACKGROUND

Made up of nearly 146 million bases, chromosome 8 encodes about 800 genes. Translocation of portions of chromosome 8 with amplifications of the c-Myc gene are found in some leukemias and lymphomas, and typically associated with a poor prognosis. Portions of chromosome 8 have been linked to schizophrenia and bipolar disorder. Trisomy 8, also known as Warkany syndrome 2, most often results in early miscarriage but is occasionally seen in a mosaic form in surviving patients who suffer to a varying degree from a number of symptoms including retarded mental and motor development, and certain facial and developmental defects. WRN is a DNA helicase encoded by chromosome 8 and shown defective in those with the early aging disorder Werner syndrome. Chromosome 8 is also associated with Pfeiffer syndrome, congenital hypothyroidism and Waardenburg syndrome. The LOC728587 gene product has been provisionally designated LOC728587 pending further characterization.

REFERENCES

- Wildenauer, D.B. and Schwab, S.G. 1999. Chromosomes 8 and 10 workshop. *Am. J. Med. Genet.* 88: 239-243.
- Kashino, G., Kodama, S., Suzuki, K., Oshimura, M. and Watanabe, M. 2001. Preferential expression of an intact WRN gene in Werner syndrome cell lines in which a normal chromosome 8 has been introduced. *Biochem. Biophys. Res. Commun.* 289: 111-115.
- Selicorni, A., Gueneri, S., Ratti, A. and Pizzuti, A. 2002. Cytogenetic mapping of a novel locus for type II Waardenburg syndrome. *Hum. Genet.* 110: 64-67.
- McQueen, M.B., Devlin, B., Faraone, S.V., Nimgaonkar, V.L., Sklar, P., Smoller, J.W., Abou Jamra, R., Albus, M., Bacanu, S.A., Baron, M., Barrett, T.B., Berrettini, W., Blacker, D., Byerley, W., Cichon, S., et al. 2005. Combined analysis from eleven linkage studies of bipolar disorder provides strong evidence of susceptibility loci on chromosomes 6q and 8q. *Am. J. Hum. Genet.* 77: 582-595.
- Agrelo, R., Cheng, W.H., Setien, F., Roper, S., Espada, J., Fraga, M.F., Herranz, M., Paz, M.F., Sanchez-Cespedes, M., Artiga, M.J., Guerrero, D., Castells, A., von Kobbe, C., Bohr, V.A. and Esteller, M. 2006. Epigenetic inactivation of the premature aging Werner syndrome gene in human cancer. *Proc. Natl. Acad. Sci USA* 103: 8822-8827.
- Mossafa, H., Damotte, D., Jenabian, A., Delarue, R., Vincenneau, A., Amouroux, I., Jeandel, R., Khoury, E., Martelli, J.M., Samson, T., Tapia, S., Flandrin, G. and Troussard, X. 2006. Non-Hodgkin's lymphomas with Burkitt-like cells are associated with c-Myc amplification and poor prognosis. *Leuk. Lymphoma* 47: 1885-1893.
- Nusbaum, C., Mikkelsen, T.S., Zody, M.C., Asakawa, S., Taudien, S., Garber, M., Kodira, C.D., Schueler, M.G., Shimizu, A., Whittaker, C.A., Chang, J.L., et al. 2006. DNA sequence and analysis of human chromosome 8. *Nature* 439: 331-335.

STORAGE

Store at 4° C, ****DO NOT FREEZE****. Stable for one year from the date of shipment. Non-hazardous. No MSDS required.

CHROMOSOMAL LOCATION

Genetic locus: LOC728587 (human) mapping to 8q11.1.

SOURCE

LOC728587 (P-12) is an affinity purified rabbit polyclonal antibody raised against a peptide mapping near the N-terminus of LOC728587 of human origin.

PRODUCT

Each vial contains 100 µg IgG in 1.0 ml of PBS with < 0.1% sodium azide and 0.1% gelatin.

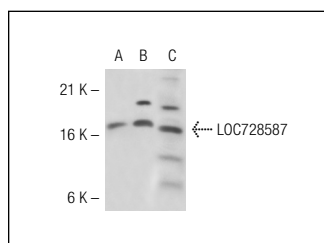
Blocking peptide available for competition studies, sc-87897 P, (100 µg peptide in 0.5 ml PBS containing < 0.1% sodium azide and 0.2% BSA).

APPLICATIONS

LOC728587 (P-12) is recommended for detection of LOC728587 of human origin by Western Blotting (starting dilution 1:200, dilution range 1:100-1:1000), immunoprecipitation [1-2 µg per 100-500 µg of total protein (1 ml of cell lysate)], immunofluorescence (starting dilution 1:50, dilution range 1:50-1:500) and solid phase ELISA (starting dilution 1:30, dilution range 1:30-1:3000).

Positive Controls: HEK293 whole cell lysate: sc-45136, HeLa whole cell lysate: sc-2200 or MIA PaCa-2 cell lysate: sc-2285.

DATA



LOC728587 (P-12): sc-87897. Western blot analysis of LOC728587 expression in HEK293 (A), HeLa (B) and MIA PaCa-2 (C) whole cell lysates.

RESEARCH USE

For research use only, not for use in diagnostic procedures.

PROTOCOLS

See our web site at www.scbt.com or our catalog for detailed protocols and support products.