

RAMP1 (C-20): sc-8851

BACKGROUND

Receptor activity-modifying proteins (RAMPs) are transmembrane accessory proteins that influence the pharmacological profiles of the calcitonin receptor-like receptors (CRLR). RAMPs associate with CRLR in the endoplasmic reticulum and facilitate the glycosylation and transport of CRLR to the cell surface, where the mature protein then operates as a receptor for two structurally related vasodilatory peptides, calcitonin-gene-related peptide (CGRP) or adrenomedullin (ADM). RAMP1 associating with CRLR confers a CGRP receptor, while RAMP2 and RAMP3 preferentially induce a responsiveness to ADM. RAMP proteins, including RAMP1, RAMP2 and RAMP3, are structurally similar as they are type I receptors, which have a single extracellular N-terminus and a cytoplasmic C-terminus, and they share approximately 55% sequence similarity. RAMP1 expression is highest in the uterus, brain and gastrointestinal tract, whereas RAMP2 and RAMP3 are highest in lung, breast and fetal tissues.

REFERENCES

1. McLatchie, L.M., et al. 1998. RAMPs regulate the transport and ligand specificity of the calcitonin-receptor-like receptor. *Nature* 393: 333-339.
2. Sams, A., et al. 1998. Expression of calcitonin receptor-like receptor and receptor-activity-modifying proteins in human cranial arteries. *Neurosci. Lett.* 258: 41-44.
3. Fraser, N.J., et al. 1999. The amino terminus of receptor activity modifying proteins is a critical determinant of glycosylation state and ligand binding of calcitonin receptor-like receptor. *Mol. Pharmacol.* 55: 1054-1059.
4. Foord, S.M., et al. 1999. RAMPs: accessory proteins for seven transmembrane domain receptors. *Trends Pharmacol. Sci.* 20: 184-187.

CHROMOSOMAL LOCATIONS

Genetic locus: RAMP1 (human) mapping to 2q37.3; Ramp1 (mouse) mapping to 1 D.

SOURCE

RAMP1 (C-20) is an affinity purified goat polyclonal antibody raised against a peptide mapping near the C-terminus of RAMP1 of human origin.

PRODUCT

Each vial contains 200 µg IgG in 1.0 ml of PBS with < 0.1% sodium azide and 0.1% gelatin.

Blocking peptide available for competition studies, sc-8851 P, (100 µg peptide in 0.5 ml PBS containing < 0.1% sodium azide and 0.2% BSA).

STORAGE

Store at 4° C, ****DO NOT FREEZE****. Stable for one year from the date of shipment. Non-hazardous. No MSDS required.

PROTOCOLS

See our web site at www.scbt.com or our catalog for detailed protocols and support products.

APPLICATIONS

RAMP1 (C-20) is recommended for detection of RAMP1 of human and, to a lesser extent, mouse and rat origin by Western Blotting (starting dilution 1:200, dilution range 1:100-1:1000), immunoprecipitation [1-2 µg per 100-500 µg of total protein (1 ml of cell lysate)], immunofluorescence (starting dilution 1:50, dilution range 1:50-1:500) and solid phase ELISA (starting dilution 1:30, dilution range 1:30-1:3000).

RAMP1 (C-20) is also recommended for detection of RAMP1 in additional species, including canine.

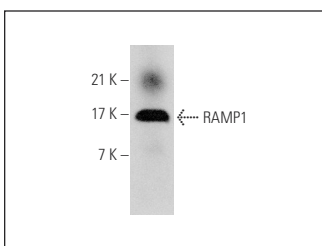
Suitable for use as control antibody for RAMP1 siRNA (h): sc-40894, RAMP1 siRNA (m): sc-40895, RAMP1 shRNA Plasmid (h): sc-40894-SH, RAMP1 shRNA Plasmid (m): sc-40895-SH, RAMP1 shRNA (h) Lentiviral Particles: sc-40894-V and RAMP1 shRNA (m) Lentiviral Particles: sc-40895-V.

Positive Controls: human heart extract: sc-363763.

RECOMMENDED SECONDARY REAGENTS

To ensure optimal results, the following support (secondary) reagents are recommended: 1) Western Blotting: use donkey anti-goat IgG-HRP: sc-2020 (dilution range: 1:2000-1:100,000) or Cruz Marker™ compatible donkey anti-goat IgG-HRP: sc-2033 (dilution range: 1:2000-1:5000), Cruz Marker™ Molecular Weight Standards: sc-2035, TBS Blotto A Blocking Reagent: sc-2333 and Western Blotting Luminol Reagent: sc-2048. 2) Immunoprecipitation: use Protein A/G PLUS-Agarose: sc-2003 (0.5 ml agarose/2.0 ml). 3) Immunofluorescence: use donkey anti-goat IgG-FITC: sc-2024 (dilution range: 1:100-1:400) or donkey anti-goat IgG-TR: sc-2783 (dilution range: 1:100-1:400) with UltraCruz™ Mounting Medium: sc-24941.

DATA



RAMP1 (C-20): sc-8851. Western blot analysis of RAMP1 expression in human heart tissue extract.

RESEARCH USE

For research use only, not for use in diagnostic procedures.



Try **RAMP1 (3B9): sc-293438**, our highly recommended monoclonal alternative to RAMP1 (C-20).