

WISP-1 (V-19): sc-8866

BACKGROUND

Wnt-induced secreted protein (WISP)-1 and WISP-2 and WISP-3 are members of the CCN family of growth factors, which include connective tissue growth factor (CTGF) and Cyr61. WISP-1, WISP-2 and WISP-3 share significant sequence similarity, including four conserved cysteine-rich domains, and they are believed to function as dimers in their active forms. WISP-1 expression is observed in various tissues including adult heart, kidney and spleen, while WISP-2 expression predominates in skeletal muscle, colon and ovary. Both WISP-1 and WISP-2 are upregulated in cells transformed with the proto-oncogene Wnt-1, and they are also more highly expressed in human colon tumors, suggesting that these proteins may participate in tumor development. WISP-3 is involved in normal post-natal skeletal growth, and it is also implicated in the development of the autosomal recessive skeletal disorder progressive pseudorheumatoid dysplasia, which affects cartilage homeostasis by disrupting the growth of chondrocyte and normal cell columnar organization.

REFERENCES

1. Shimizu, H., et al. 1997. Transformation by Wnt family proteins correlates with regulation of β -catenin. *Cell Growth Differ.* 8: 1349-1358.
2. el-Shanti, H.E., et al. 1997. Progressive pseudorheumatoid dysplasia: report of a family and review. *J. Med. Genet.* 34: 559-563.
3. Pennica, D., et al. 1998. WISP genes are members of the connective tissue growth factor family that are up-regulated in Wnt-1-transformed cells and aberrantly expressed in human colon tumors. *Proc. Natl. Acad. Sci. USA* 95: 14717-14722.
4. Hurvitz, J.R., et al. 1999. Mutations in the CCN gene family member WISP3 cause progressive pseudorheumatoid dysplasia. *Nat. Genet.* 23: 94-98.
5. Babic, A.M., et al. 1999. Fisp12/mouse connective tissue growth factor mediates endothelial cell adhesion and migration through integrin $\alpha v \beta 3$, promotes endothelial cell survival, and induces angiogenesis *in vivo*. *Mol. Cell. Biol.* 19: 2958-2966.

CHROMOSOMAL LOCATION

Genetic locus: *Wisp1* (mouse) mapping to 15 D2.

SOURCE

WISP-1 (V-19) is an affinity purified goat polyclonal antibody raised against a peptide mapping near the N-terminus of WISP-1 of mouse origin.

PRODUCT

Each vial contains 200 μ g IgG in 1.0 ml of PBS with < 0.1% sodium azide and 0.1% gelatin.

Blocking peptide available for competition studies, sc-8866 P, (100 μ g peptide in 0.5 ml PBS containing < 0.1% sodium azide and 0.2% BSA).

STORAGE

Store at 4° C, ****DO NOT FREEZE****. Stable for one year from the date of shipment. Non-hazardous. No MSDS required.

APPLICATIONS

WISP-1 (V-19) is recommended for detection of WISP-1 of mouse and rat origin by Western Blotting (starting dilution 1:200, dilution range 1:100-1:1000), immunoprecipitation [1-2 μ g per 100-500 μ g of total protein (1 ml of cell lysate)], immunofluorescence (starting dilution 1:50, dilution range 1:50-1:500) and solid phase ELISA (starting dilution 1:30, dilution range 1:30-1:3000).

Suitable for use as control antibody for WISP-1 siRNA (m): sc-39336, WISP-1 shRNA Plasmid (m): sc-39336-SH and WISP-1 shRNA (m) Lentiviral Particles: sc-39336-V.

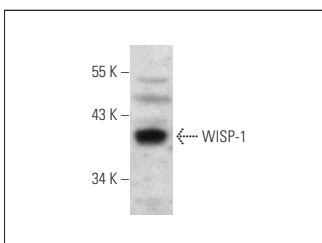
Molecular Weight of WISP-1: 34 kDa.

Positive Controls: rat heart extract: sc-2393 or rat liver extract: sc-2395.

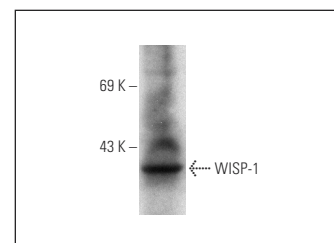
RECOMMENDED SECONDARY REAGENTS

To ensure optimal results, the following support (secondary) reagents are recommended: 1) Western Blotting: use donkey anti-goat IgG-HRP: sc-2020 (dilution range: 1:2000-1:100,000) or Cruz Marker™ compatible donkey anti-goat IgG-HRP: sc-2033 (dilution range: 1:2000-1:5000), Cruz Marker™ Molecular Weight Standards: sc-2035, TBS Blotto A Blocking Reagent: sc-2333 and Western Blotting Luminol Reagent: sc-2048. 2) Immunoprecipitation: use Protein A/G PLUS-Agarose: sc-2003 (0.5 ml agarose/2.0 ml). 3) Immunofluorescence: use donkey anti-goat IgG-FITC: sc-2024 (dilution range: 1:100-1:400) or donkey anti-goat IgG-TR: sc-2783 (dilution range: 1:100-1:400) with UltraCruz™ Mounting Medium: sc-24941.

DATA



WISP-1 (V-19): sc-8866. Western blot analysis of WISP-1 expression in rat liver tissue extract.



WISP-1 (V-19): sc-8866. Western blot analysis of WISP-1 expression in rat heart tissue extract.

RESEARCH USE

For research use only, not for use in diagnostic procedures.

PROTOCOLS

See our web site at www.scbt.com or our catalog for detailed protocols and support products.