

Mel-18 (C-20): sc-8905

BACKGROUND

In *Drosophila*, polycomb (PcG) gene family encodes chromatin proteins that are required for the repression of homeotic loci in embryonic development. Mel-18 and Bmi-1 are mammalian homologs of *Drosophila* PcG group proteins, as they are similarly expressed during development and implicated in the regulation of gene expression, axial skeleton development, and the control of proliferation and survival of haematopoietic cells. Mel-18 directly binds to DNA through a RING-finger motif and preferentially associates with juxtaposed enhancer elements on various genes, including Bcl-2, c-Myc and Hox. Mel-18 is an immediate early response gene within the c-Myc/Cdc25 signaling cascade that exhibits tumor suppressor activity and negatively regulates cell cycle progression by blocking S phase entry. Alternatively, Bmi-1 has been identified as a potent oncogene as it contributes to the transcriptional activation of genes implicated in early lymphoid development. Proviral activation of Bmi-1 expression corresponds to enhanced gene-specific activation of other proto-oncogenes, including c-Myc and pim, subsequently resulting in the progression of lymphomagenesis.

CHROMOSOMAL LOCATION

Genetic locus: PCGF2 (human) mapping to 17q12; Pcgf2 (mouse) mapping to 11 D.

SOURCE

Mel-18 (C-20) is an affinity purified goat polyclonal antibody raised against a peptide mapping at the C-terminus of Mel-18 of human origin.

PRODUCT

Each vial contains 200 µg IgG in 1.0 ml of PBS with < 0.1% sodium azide and 0.1% gelatin. Also available as TransCruz reagent for Gel Supershift and ChIP applications, sc-8905 X, 200 µg/0.1 ml.

Blocking peptide available for competition studies, sc-8905 P, (100 µg peptide in 0.5 ml PBS containing < 0.1% sodium azide and 0.2% BSA).

APPLICATIONS

Mel-18 (C-20) is recommended for detection of Mel-18 of mouse, rat and human origin by Western Blotting (starting dilution 1:200, dilution range 1:100-1:1000), immunoprecipitation [1-2 µg per 100-500 µg of total protein (1 ml of cell lysate)], immunofluorescence (starting dilution 1:50, dilution range 1:50-1:500) and solid phase ELISA (starting dilution 1:30, dilution range 1:30-1:3000). Mel-18 (C-20) is also recommended for detection of Mel-18 in additional species, including equine, canine, bovine and porcine.

Suitable for use as control antibody for Mel-18 siRNA (h): sc-38191, Mel-18 siRNA (m): sc-38192, Mel-18 shRNA Plasmid (h): sc-38191-SH, Mel-18 shRNA Plasmid (m): sc-38192-SH, Mel-18 shRNA (h) Lentiviral Particles: sc-38191-V and Mel-18 shRNA (m) Lentiviral Particles: sc-38192-V.

Mel-18 (C-20) X TransCruz antibody is recommended for Gel Supershift and ChIP applications.

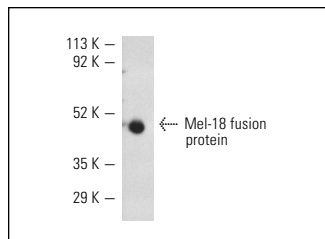
Molecular Weight of Mel-18 monomer: 38 kDa.

Molecular Weight of Mel-18 dimer: 70-90 kDa.

STORAGE

Store at 4° C, ****DO NOT FREEZE****. Stable for one year from the date of shipment. Non-hazardous. No MSDS required.

DATA



Mel-18 (C-20): sc-8905. Western blot analysis of human recombinant Mel-18 fusion protein.

SELECT PRODUCT CITATIONS

- Alonso, S.R., et al. 2004. Progression in cutaneous malignant melanoma is associated with distinct expression profiles: a tissue microarray-based study. *Am. J. Pathol.* 164: 193-203.
- Sánchez-Beato, M., et al. 2006. Variability in the expression of polycomb proteins in different normal and tumoral tissues. A pilot study using tissue microarrays. *Mod. Pathol.* 19: 684-694.
- Jacob, E., et al. 2008. Unconventional association of the polycomb group proteins with cytokine genes in differentiated T helper cells. *J. Biol. Chem.* 283: 13471-13481.
- Vékony, H., et al. 2008. Deregulated expression of p16INK4a and p53 pathway members in benign and malignant myoepithelial tumours of the salivary glands. *Histopathology* 53: 658-666.
- Jacob, E., et al. 2011. Dual function of polycomb group proteins in differentiated murine T helper (CD4⁺) cells. *J. Mol. Signal.* 6: 5.
- Hod-Dvorai, R., et al. 2011. The binding activity of Mel-18 at the Il17a promoter is regulated by the integrated signals of the TCR and polarizing cytokines. *Eur. J. Immunol.* 41: 2424-2435.

RESEARCH USE

For research use only, not for use in diagnostic procedures.

PROTOCOLS

See our web site at www.scbt.com or our catalog for detailed protocols and support products.



MONOS
Satisfation
Guaranteed

Try **Mel-18 (H-1): sc-515329** or **Mel-18 (B-8): sc-390868**, our highly recommended monoclonal alternatives to Mel-18 (C-20).