

PCDHA4 (M-18): sc-8919

BACKGROUND

Members of the cadherin-related neuronal receptor (CNR) family, including PCDHA4 (also known as CNR1) and PCDHA6 (also known as CNR2), comprise a novel subfamily within the cadherin superfamily of adhesion molecules. The cadherin-related neuronal receptor proteins form a complex with Fyn, a protein tyrosine kinase that is involved in building brain networks and determining patterns of behavior. Cadherin-related neuronal receptor 1 and 2 were discovered during a search for receptor molecules to the Fyn signaling pathway in the mammalian brain. Members of the cadherin superfamily are Ca²⁺-dependent adhesion molecules that function to mediate cell-cell binding critical to the maintenance of tissue structure and morphogenesis. The PCDHA4 and PCDHA6 extracellular domains contain six cadherin repeats that mediate Ca²⁺-dependent cell adhesion, while the cytoplasmic domains are not homologous with other cadherins.

REFERENCES

- Koch, P.J. and Franke, W.W. 1994. Desmosomal cadherins: another growing multigene family of adhesion molecules. *Curr. Opin. Cell Biol.* 6: 682-687.
- Ranscht, B. 1994. Cadherins and catenins: interactions and functions in embryonic development. *Curr. Opin. Cell Biol.* 6: 740-746.
- Ayalon, O., Sabanai, H., Lampugnani, M.G., Dejana, E. and Geiger, B. 1994. Spatial and temporal relationships between cadherins and PECAM-1 in cell-cell junctions of human endothelial cells. *J. Cell Biol.* 126: 247-258.
- Takeichi, M. 1995. Morphogenetic roles of classic cadherins. *Curr. Opin. Cell Biol.* 7: 619-627.
- Kai, N., Mishina, M. and Yagi, T. 1997. Molecular cloning of Fyn-associated molecules in the mouse central nervous system. *J. Neurosci. Res.* 48: 407-424.
- Kohmura, N., Senzaki, K., Hamada, S., Kai, N., Yasuda, R., Watanabe, M., Ishii, H., Yasuda, M., Mishina, M. and Yagi, T. 1998. Diversity revealed by a novel family of cadherins expressed in neurons at a synaptic complex. *Neuron* 20: 1137-1151.
- Resh, M.D. 1998. Fyn, a Src family tyrosine kinase. *Int. J. Biochem. Cell Biol.* 30: 1159-1162.

SOURCE

PCDHA4 (M-18) is an affinity purified goat polyclonal antibody raised against a peptide mapping near the C-terminus of PCDHA4 of mouse origin.

PRODUCT

Each vial contains 200 µg IgG in 1.0 ml of PBS with < 0.1% sodium azide and 0.1% gelatin.

Blocking peptide available for competition studies, sc-8919 P, (100 µg peptide in 0.5 ml PBS containing < 0.1% sodium azide and 0.2% BSA).

STORAGE

Store at 4° C, ****DO NOT FREEZE****. Stable for one year from the date of shipment. Non-hazardous. No MSDS required.

APPLICATIONS

PCDHA4 (M-18) is recommended for detection of a broad range of CNR/PCDHA family members of mouse, rat and human origin by Western Blotting (starting dilution 1:200, dilution range 1:100-1:1000), immunofluorescence (starting dilution 1:50, dilution range 1:50-1:500), immunohistochemistry (including paraffin-embedded sections) (starting dilution 1:50, dilution range 1:50-1:500) and solid phase ELISA (starting dilution 1:30, dilution range 1:30-1:3000).

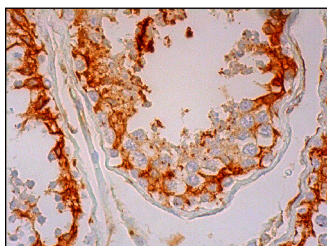
PCDHA4 (M-18) is also recommended for detection of a broad range of CNR/PCDHA family members in additional species, including equine, canine, bovine, porcine and avian.

Molecular Weight of PCDHA4: 102 kDa.

RECOMMENDED SECONDARY REAGENTS

To ensure optimal results, the following support (secondary) reagents are recommended: 1) Western Blotting: use donkey anti-goat IgG-HRP: sc-2020 (dilution range: 1:2000-1:100,000) or Cruz Marker™ compatible donkey anti-goat IgG-HRP: sc-2033 (dilution range: 1:2000-1:5000), Cruz Marker™ Molecular Weight Standards: sc-2035, TBS Blotto A Blocking Reagent: sc-2333 and Western Blotting Luminol Reagent: sc-2048. 2) Immunofluorescence: use donkey anti-goat IgG-FITC: sc-2024 (dilution range: 1:100-1:400) or donkey anti-goat IgG-TR: sc-2783 (dilution range: 1:100-1:400) with UltraCruz™ Mounting Medium: sc-24941. 3) Immunohistochemistry: use ImmunoCruz™: sc-2053 or ABC: sc-2023 goat IgG Staining Systems.

DATA



PCDHA4 (M-18): sc-8919. Immunoperoxidase staining of formalin fixed, paraffin-embedded human testis tissue showing membrane and cytoplasmic staining of cells in seminiferous ducts.

RESEARCH USE

For research use only, not for use in diagnostic procedures.

PROTOCOLS

See our web site at www.scbt.com or our catalog for detailed protocols and support products.