

Cdc42 (cC-17): sc-9280

BACKGROUND

A variety of growth factor signaling molecules have been shown to regulate *C. elegans* development, including members of the EGF, FGF and TGF β super-families. These factors bind to specific receptors and transduce extracellular signals to the nucleus. Receptor tyrosine kinase/Ras pathways also play a critical role in cell signaling and are responsible for proper vulval development. SUR-5 shares sequence homology with mammalian acetyl coenzyme A synthetases. A member of the kinase suppressor of Ras family, KSR-1 shares sequence homology with the Raf family protein kinases and is capable of binding to MEK. MPK-1, also known as SUR-1, is most closely related to mammalian MAP kinases (ERKs). The *C. elegans* homolog of the p21 Ras-related CDC42 is designated CDC42ce.

REFERENCES

1. Carpenter, G. 1993. EGF: new tricks for an old growth factor. *Curr. Opin. Cell Biol.* 5: 261-264.
2. Chen, W., Lim, H.H. and Lim, L. 1993. The CDC42 homologue from *Caenorhabditis elegans*. Complementation of yeast mutation. *J. Biol. Chem.* 268: 13280-13285.
3. Wu, Y. and Han, M. 1994. Suppression of activated LET-60 RAS protein defines a role of *Caenorhabditis elegans* SUR-1 MAP kinase in vulval differentiation. *Genes Dev.* 8: 147-159.
4. Sternberg, P.W., Lesa, G., Lee, J., Katz, W.S., Yoon, C., Clandinin, T.R., Huang, L.S., Chamberlin, H.M. and Jongeward, G. 1995. LET-23-mediated signal transduction during *Caenorhabditis elegans* development. *Mol. Reprod. Dev.* 42: 523-528.
5. Kayne, P.S. and Sternberg, P.W. 1995. Ras pathways in *Caenorhabditis elegans*. *Curr. Opin. Genet. Dev.* 5: 38-43.
6. Gu, T., Orita, S. and Han, M. 1998. *Caenorhabditis elegans* SUR-5, a novel but conserved protein, negatively regulates LET-60 RAS activity during vulval induction. *Mol. Cell. Biol.* 18: 4556-4564.
7. Stewart, S., Sundaram, M., Zhang, Y., Lee, J., Han, M. and Guan, K.L. 1999. Kinase suppressor of Ras forms a multiprotein signaling complex and modulates MEK localization. *Mol. Cell. Biol.* 19: 5523-5534.

SOURCE

Cdc42 (cC-17) is an affinity purified goat polyclonal antibody raised against a peptide mapping near the C-terminus of Cdc42 of *C. elegans* origin.

PRODUCT

Each vial contains 200 μ g IgG in 1.0 ml of PBS with < 0.1% sodium azide and 0.1% gelatin.

Blocking peptide available for competition studies, sc-9280 P, (100 μ g peptide in 0.5 ml PBS containing < 0.1% sodium azide and 0.2% BSA).

STORAGE

Store at 4° C, **DO NOT FREEZE**. Stable for one year from the date of shipment. Non-hazardous. No MSDS required.

APPLICATIONS

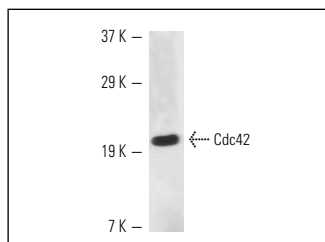
Cdc42 (cC-17) is recommended for detection of Cdc42 of *Caenorhabditis elegans* origin by Western Blotting (starting dilution 1:200, dilution range 1:100-1:1000), immunoprecipitation [1-2 μ g per 100-500 μ g of total protein (1 ml of cell lysate)], immunofluorescence (starting dilution 1:50, dilution range 1:50-1:500) and solid phase ELISA (starting dilution 1:30, dilution range 1:30-1:3000).

Molecular Weight of Cdc42: 25 kDa.

RECOMMENDED SECONDARY REAGENTS

To ensure optimal results, the following support (secondary) reagents are recommended: 1) Western Blotting: use donkey anti-goat IgG-HRP: sc-2020 (dilution range: 1:2000-1:100,000) or Cruz Marker™ compatible donkey anti-goat IgG-HRP: sc-2033 (dilution range: 1:2000-1:5000), Cruz Marker™ Molecular Weight Standards: sc-2035, TBS Blotto A Blocking Reagent: sc-2333 and Western Blotting Luminol Reagent: sc-2048. 2) Immunoprecipitation: use Protein A/G PLUS-Agarose: sc-2003 (0.5 ml agarose/2.0 ml). 3) Immunofluorescence: use donkey anti-goat IgG-FITC: sc-2024 (dilution range: 1:100-1:400) or donkey anti-goat IgG-TR: sc-2783 (dilution range: 1:100-1:400) with UltraCruz™ Mounting Medium: sc-24941.

DATA



Cdc42 (cC-17): sc-9280. Western blot analysis of Cdc42 expression in *C. elegans* extract.

RESEARCH USE

For research use only, not for use in diagnostic procedures.

PROTOCOLS

See our web site at www.scbt.com or our catalog for detailed protocols and support products.

MONOS
Satisfaction
Guaranteed

Try **Cdc42 (B-9): sc-390210**, our highly recommended monoclonal alternative to Cdc42 (cC-17).