

# Annexin XI (L-19): sc-9322

## BACKGROUND

The Annexin family of calcium-binding proteins is composed of at least ten mammalian genes. It is characterized by a conserved core domain, which binds to phospholipids in a  $\text{Ca}^{2+}$ -dependent manner, and a unique amino terminal region, which may confer their respective binding specificities. The Annexin family has been implicated as regulators of such diverse processes as ion flux, endocytosis and exocytosis and cellular adhesion. Two forms of Annexin XI, designated A and B, have been identified. Transfection of COS-7 cells with Annexin XI-A, but not Annexin XI-B, causes formation of Annexin XI-associated vesicles.

## CHROMOSOMAL LOCATION

Genetic locus: ANXA11 (human) mapping to 10q22.3; Anxa11 (mouse) mapping to 14 A3.

## SOURCE

Annexin XI (L-19) is an affinity purified goat polyclonal antibody raised against a peptide mapping near the N-terminus of Annexin XI of human origin.

## PRODUCT

Each vial contains 200  $\mu\text{g}$  IgG in 1.0 ml of PBS with < 0.1% sodium azide and 0.1% gelatin.

Blocking peptide available for competition studies, sc-9322 P, (100  $\mu\text{g}$  peptide in 0.5 ml PBS containing < 0.1% sodium azide and 0.2% BSA).

## APPLICATIONS

Annexin XI (L-19) is recommended for detection of Annexin XI of mouse, rat and human origin by Western Blotting (starting dilution 1:200, dilution range 1:100-1:1000), immunoprecipitation [1-2  $\mu\text{g}$  per 100-500  $\mu\text{g}$  of total protein (1 ml of cell lysate)], immunofluorescence (starting dilution 1:50, dilution range 1:50-1:500), immunohistochemistry (including paraffin-embedded sections) (starting dilution 1:50, dilution range 1:50-1:500) and solid phase ELISA (starting dilution 1:30, dilution range 1:30-1:3000).

Annexin XI (L-19) is also recommended for detection of Annexin XI in additional species, including equine, canine, bovine, porcine and avian.

Suitable for use as control antibody for Annexin XI siRNA (h): sc-29694, Annexin XI siRNA (m): sc-29695, Annexin XI shRNA Plasmid (h): sc-29694-SH, Annexin XI shRNA Plasmid (m): sc-29695-SH, Annexin XI shRNA (h) Lentiviral Particles: sc-29694-V and Annexin XI shRNA (m) Lentiviral Particles: sc-29695-V.

Molecular Weight of Annexin XI: 50-56 kDa.

Positive Controls: Annexin XI (h): 293T Lysate: sc-170010, Annexin XI (m): 293T Lysate: sc-118437 or NIH/3T3 nuclear extract: sc-2138.

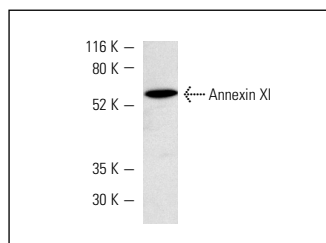
## STORAGE

Store at 4° C, \*\*DO NOT FREEZE\*\*. Stable for one year from the date of shipment. Non-hazardous. No MSDS required.

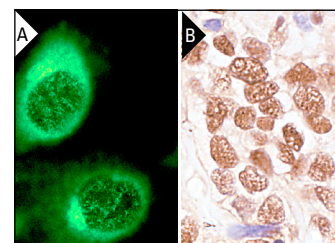
## RESEARCH USE

For research use only, not for use in diagnostic procedures.

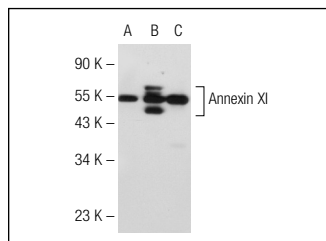
## DATA



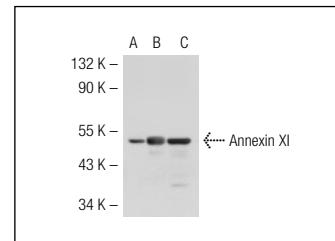
Annexin XI (L-19): sc-9322. Western blot analysis of Annexin XI expression in 3611-RF nuclear extract.



Annexin XI (L-19): sc-9322. Immunofluorescence staining of methanol-fixed 3611-RF cells showing cytoplasmic staining (A). Immunoperoxidase staining of formalin-fixed, paraffin-embedded human lung tumor showing nuclear staining (B).



Annexin XI (L-19): sc-9322. Western blot analysis of Annexin XI expression in non-transfected 293T: sc-117752 (A), human Annexin XI transfected 293T: sc-170010 (B) and WI 38 (C) whole cell lysates.



Annexin XI (L-19): sc-9322. Western blot analysis of Annexin XI expression in non-transfected 293T: sc-117752 (A), mouse Annexin XI transfected 293T: sc-118437 (B) and A-431 (C) whole cell lysates.

## SELECT PRODUCT CITATIONS

1. Tomas, A., et al. 2003. Calcium- and cell cycle-dependent association of Annexin 11 with the nuclear envelope. *J. Biol. Chem.* 278: 20210-20216.
2. Fernandez-Madrid, F., et al. 2004. Autoantibodies to Annexin XI-A and other autoantigens in the diagnosis of breast cancer. *Cancer Res.* 64: 5089-5096.
3. Tomas, A., et al. 2004. Annexin XI is required for midbody formation and completion of the terminal phase of cytokinesis. *J. Cell Biol.* 165: 813-822.
4. Berglund, S.R., et al. 2009. Proteomic analysis of low dose arsenic and ionizing radiation exposure on keratinocytes. *Proteomics* 9: 1925-1938.

## PROTOCOLS

See our web site at [www.scbt.com](http://www.scbt.com) or our catalog for detailed protocols and support products.

**MONOS**  
Satisfaction  
Guaranteed

Try **Annexin XI (D-12): sc-46686** or **Annexin XI (E-10): sc-271487**, our highly recommended monoclonal alternatives to Annexin XI (L-19).