

MSK1 (N-18): sc-9391

BACKGROUND

The family of ribosomal S6 kinases (Rsk), designated Rsk-1, Rsk-2 and Rsk-3, have been implicated as important signaling intermediates in response to a broad range of ligand-activated receptor tyrosine kinases. A unique feature common to the three members of the Rsk family is that each possesses two non-identical complete kinase catalytic domains. A related S6 kinase, p70 S6 kinase, functions to phosphorylate the S6 protein on ribosomal 40S subunits. p70 S6 kinase β shares high sequence homology with p70 S6 kinase, except in the carboxy terminus where it contains a proline-rich domain that may be involved in SH3 domain containing protein interactions. MSK1 (also designated RLPK) is related to Rsk and p70 S6 kinase family members and is thought to be structurally similar to Rsk family members, but it may be regulated by distinct mechanisms.

CHROMOSOMAL LOCATION

Genetic locus: RPS6KA5 (human) mapping to 14q32.11; Rps6ka5 (mouse) mapping to 12 E.

SOURCE

MSK1 (N-18) is an affinity purified goat polyclonal antibody raised against a peptide mapping near the N-terminus of MSK1 of human origin.

PRODUCT

Each vial contains 200 μ g IgG in 1.0 ml of PBS with < 0.1% sodium azide and 0.1% gelatin.

Blocking peptide available for competition studies, sc-9391 P, (100 μ g peptide in 0.5 ml PBS containing < 0.1% sodium azide and 0.2% BSA).

STORAGE

Store at 4° C, ****DO NOT FREEZE****. Stable for one year from the date of shipment. Non-hazardous. No MSDS required.

APPLICATIONS

MSK1 (N-18) is recommended for detection of MSK1 of mouse, rat and human origin by Western Blotting (starting dilution 1:200, dilution range 1:100-1:1000), immunoprecipitation [1-2 μ g per 100-500 μ g of total protein (1 ml of cell lysate)], immunofluorescence (starting dilution 1:50, dilution range 1:50-1:500), immunohistochemistry (including paraffin-embedded sections) (starting dilution 1:50, dilution range 1:50-1:500) and solid phase ELISA (starting dilution 1:30, dilution range 1:30-1:3000).

Suitable for use as control antibody for MSK1 siRNA (h): sc-35977, MSK1 siRNA (m): sc-35978, MSK1 shRNA Plasmid (h): sc-35977-SH, MSK1 shRNA Plasmid (m): sc-35978-SH, MSK1 shRNA (h) Lentiviral Particles: sc-35977-V and MSK1 shRNA (m) Lentiviral Particles: sc-35978-V.

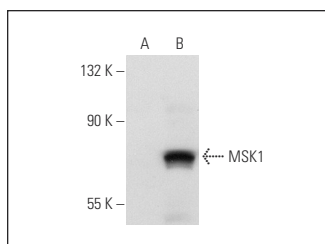
Molecular Weight of MSK1: 90 kDa.

Positive Controls: MSK1 (h): 293 Lysate: sc-158744, HeLa whole cell lysate: sc-2200 or JAR cell lysate: sc-2276.

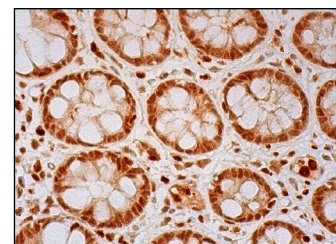
RECOMMENDED SECONDARY REAGENTS

To ensure optimal results, the following support (secondary) reagents are recommended: 1) Western Blotting: use donkey anti-goat IgG-HRP: sc-2020 (dilution range: 1:2000-1:100,000) or Cruz Marker™ compatible donkey anti-goat IgG-HRP: sc-2033 (dilution range: 1:2000-1:5000), Cruz Marker™ Molecular Weight Standards: sc-2035, TBS Blotto A Blocking Reagent: sc-2333 and Western Blotting Luminol Reagent: sc-2048. 2) Immunoprecipitation: use Protein A/G PLUS-Agarose: sc-2003 (0.5 ml agarose/2.0 ml). 3) Immunofluorescence: use donkey anti-goat IgG-FITC: sc-2024 (dilution range: 1:100-1:400) or donkey anti-goat IgG-TR: sc-2783 (dilution range: 1:100-1:400) with UltraCruz™ Mounting Medium: sc-24941. 4) Immunohistochemistry: use ImmunoCruz™: sc-2053 or ABC: sc-2023 goat IgG Staining Systems.

DATA



MSK1 (N-18): sc-9391. Western blot analysis of MSK1 expression in non-transfected: sc-110760 (A) and human MSK1 transfected: sc-158744 (B) 293 whole cell lysates.



MSK1 (N-18): sc-9391. Immunoperoxidase staining of formalin fixed, paraffin-embedded human colon tissue showing nuclear and cytoplasmic staining of glandular cells and nuclear staining of endothelial cells.

RESEARCH USE

For research use only, not for use in diagnostic procedures.

PROTOCOLS

See our web site at www.scbt.com or our catalog for detailed protocols and support products.

MONOS
Satisfaction
Guaranteed

Try **MSK1 (D-77): sc-130431**, our highly recommended monoclonal alternative to MSK1 (N-18).