

Hhip (R-20): sc-9408

BACKGROUND

Hedgehog (Hh) signaling proteins are critical for growth and tissue patterning during development. Patched (Ptc), a putative 12 transmembrane receptor, binds to Sonic hedgehog and is suspected to be a negative regulator of Hh signaling. A family member of patched, designated patched 2, has been found to be co-expressed with Sonic hedgehog. Smoothed (Smo), a seven transmembrane receptor, is complexed with patched in many tissues and is believed to be an essential component in the Hh signaling pathway. Hhip (hedgehog-interacting protein) is able to bind to and may be a transcriptional target of all Hh proteins. Binding of Hhip to Hh proteins attenuates Hedgehog signaling.

CHROMOSOMAL LOCATION

Genetic locus: HHIP (human) mapping to 4q31.21; Hhip (mouse) mapping to 8 C2.

SOURCE

Hhip (R-20) is an affinity purified goat polyclonal antibody raised against a peptide mapping at the C-terminus of Hhip of mouse origin.

PRODUCT

Each vial contains 200 µg IgG in 1.0 ml of PBS with < 0.1% sodium azide and 0.1% gelatin.

Blocking peptide available for competition studies, sc-9408 P, (100 µg peptide in 0.5 ml PBS containing < 0.1% sodium azide and 0.2% BSA).

STORAGE

Store at 4° C, **DO NOT FREEZE**. Stable for one year from the date of shipment. Non-hazardous. No MSDS required.

APPLICATIONS

Hhip (R-20) is recommended for detection of Hhip of mouse, rat and human origin by Western Blotting (starting dilution 1:200, dilution range 1:100-1:1000), immunoprecipitation [1-2 µg per 100-500 µg of total protein (1 ml of cell lysate)], immunofluorescence (starting dilution 1:50, dilution range 1:50-1:500), immunohistochemistry (including paraffin-embedded sections) (starting dilution 1:50, dilution range 1:50-1:500) and solid phase ELISA (starting dilution 1:30, dilution range 1:30-1:3000).

Hhip (R-20) is also recommended for detection of Hhip in additional species, including equine, canine, bovine and avian.

Suitable for use as control antibody for Hhip siRNA (h): sc-43835, Hhip siRNA (m): sc-40164, Hhip shRNA Plasmid (h): sc-43835-SH, Hhip shRNA Plasmid (m): sc-40164-SH, Hhip shRNA (h) Lentiviral Particles: sc-43835-V and Hhip shRNA (m) Lentiviral Particles: sc-40164-V.

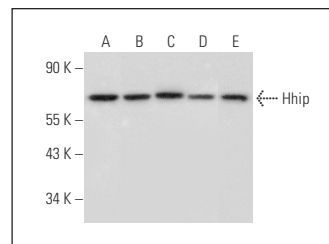
Molecular Weight of Hhip: 68 kDa.

Positive Controls: HeLa whole cell lysate: sc-2200, MCF7 whole cell lysate: sc-2206 or A549 cell lysate: sc-2413.

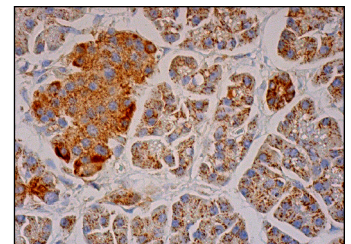
RECOMMENDED SECONDARY REAGENTS

To ensure optimal results, the following support (secondary) reagents are recommended: 1) Western Blotting: use donkey anti-goat IgG-HRP: sc-2020 (dilution range: 1:2000-1:100,000) or Cruz Marker™ compatible donkey anti-goat IgG-HRP: sc-2033 (dilution range: 1:2000-1:5000), Cruz Marker™ Molecular Weight Standards: sc-2035, TBS Blotto A Blocking Reagent: sc-2333 and Western Blotting Luminol Reagent: sc-2048. 2) Immunoprecipitation: use Protein A/G PLUS-Agarose: sc-2003 (0.5 ml agarose/2.0 ml). 3) Immunofluorescence: use donkey anti-goat IgG-FITC: sc-2024 (dilution range: 1:100-1:400) or donkey anti-goat IgG-TR: sc-2783 (dilution range: 1:100-1:400) with UltraCruz™ Mounting Medium: sc-24941. 4) Immunohistochemistry: use ImmunoCruz™: sc-2053 or ABC: sc-2023 goat IgG Staining Systems.

DATA



Hhip (R-20): sc-9408. Western blot analysis of Hhip expression in HeLa (A), NTERA-2 cl.D1 (B), MCF7 (C), HEK293 (D) and A549 (E) whole cell lysates.



Hhip (R-20): sc-9408. Immunoperoxidase staining of formalin fixed, paraffin-embedded human pancreas tissue showing cytoplasmic staining of exocrine glandular cells and Islets of Langerhans.

RESEARCH USE

For research use only, not for use in diagnostic procedures.

PROTOCOLS

See our web site at www.scbt.com or our catalog for detailed protocols and support products.

MONOS
Satisfaction
Guaranteed

Try **Hhip (5D11): sc-293265**, our highly recommended monoclonal alternative to Hhip (R-20).