

Bob 1 (C-20): sc-955

BACKGROUND

POU domain proteins contain a bipartite DNA-binding domain divided by a flexible linker that enables them to adopt various monomer configurations on DNA. The versatility of POU protein operation is additionally conferred at the dimerization level. The POU dimer from the Oct-1 gene formed on the palindromic Oct factor recognition element, or PORE (ATTGAAATGCAAAT), could recruit the transcriptional coactivator OBF1. Studies of tissue-specific expression of immunoglobulin promoters demonstrate the importance of an octamer, ATTTGCAT, and the proteins that bind to it. This is a regulatory element important for tissue- and cell-specific transcription as well as for transcription of a number of housekeeping genes. Oct-1 encodes one protein, NF-A1, which is found in nuclear extracts from all cell types and thus is not specific to lymphoid cells as is the protein NF-A2, which is encoded by Oct-2. A novel protein designated Bob 1 (B cell Oct binding protein 1), alternatively called OBF-1, specifically interacts with Oct-1 and Oct-2, enhancing their transcriptional efficacy. Bob 1 is expressed at highest levels in spleen and peripheral blood leukocytes and represents an Oct co-factor capable of conferring cell-specific activation of Oct-1 and Oct-2. Although having no intrinsic capacity for DNA binding, Bob 1 associates tightly with the octamer motif in the presence of Oct-1 and/or Oct-2. The gene which encodes Bob 1 maps to human chromosome 11q23.1.

CHROMOSOMAL LOCATION

Genetic locus: POU2AF1 (human) mapping to 11q23.1; Pou2af1 (mouse) mapping to 9 A5.3.

SOURCE

Bob 1 (C-20) is an affinity purified rabbit polyclonal antibody raised against a peptide mapping at the C-terminus of Bob 1 of human origin.

PRODUCT

Each vial contains 200 µg IgG in 1.0 ml of PBS with < 0.1% sodium azide and 0.1% gelatin.

Blocking peptide available for competition studies, sc-955 P, (100 µg peptide in 0.5 ml PBS containing < 0.1% sodium azide and 0.2% BSA).

Available as TransCruz reagent for Gel Supershift and ChIP applications, sc-955 X, 200 µg/0.1 ml.

APPLICATIONS

Bob 1 (C-21) is recommended for detection of Bob 1 of mouse, rat and human origin by Western Blotting (starting dilution 1:100, dilution range 1:50-1:500), immunoprecipitation [1-2 µg per 100-500 µg of total protein (1 ml of cell lysate)], immunofluorescence (starting dilution 1:25, dilution range 1:25-1:250), immunohistochemistry (including paraffin-embedded sections) (starting dilution 1:25, dilution range 1:25-1:250) and solid phase ELISA (starting dilution 1:30, dilution range 1:30-1:3000). Bob 1 (C-20) is also recommended for detection of Bob 1 in additional species, including equine, canine, bovine and porcine.

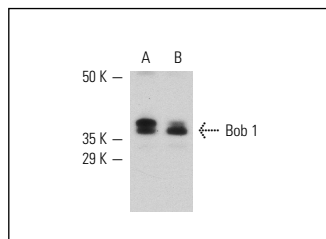
Molecular Weight of Bob 1: 35 kDa.

Positive Controls: MM-142 nuclear extract: sc-2139.

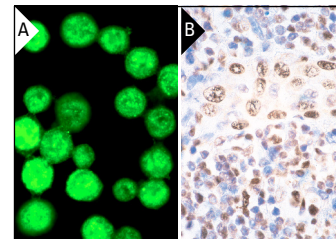
STORAGE

Store at 4° C, ****DO NOT FREEZE****. Stable for one year from the date of shipment. Non-hazardous. No MSDS required.

DATA



Bob 1 (C-20): sc-955. Western blot analysis of Bob 1 expression in MM-142 (A) and MM-142 phorbol ester-induced (B) nuclear extracts.



Bob 1 (C-20): sc-955. Immunofluorescence staining of methanol-fixed MM-142 cells showing nuclear localization (A). Immunoperoxidase staining of formalin-fixed, paraffin-embedded normal human tonsil showing nuclear staining (B).

SELECT PRODUCT CITATIONS

- Quin, X.Y., et al. 1998. OCA-B integrates B cell antigen receptor-, CD40L- and IL 4-mediated signals for the germinal center pathway of B cell development. *EMBO J.* 17: 5066-5075.
- Nam-Cha, S.H., et al. 2009. Lymphocyte-rich classical Hodgkin's lymphoma: distinctive tumor and microenvironment markers. *Mod. Pathol.* 22: 1006-1015.
- Minami, J., et al. 2010. Two cases of mediastinal gray zone lymphoma. *J. Clin. Exp. Hematop.* 50: 143-149.
- Bermúdez-López, M., et al. 2010. The Smc5/6 complex is required for dissolution of DNA-mediated sister chromatid linkages. *Nucleic Acids Res.* 38: 6502-6512.
- Toman, I., et al. 2011. Expression and prognostic significance of Oct2 and Bob1 in multiple myeloma: implications for targeted therapeutics. *Leuk. Lymphoma* 52: 659-667.
- Herbeck, R., et al. 2011. B-cell transcription factors Pax-5, Oct-2, BOB1, Bcl-6, and MUM1 are useful markers for the diagnosis of nodular lymphocyte predominant Hodgkin lymphoma. *Rom. J. Morphol. Embryol.* 52: 69-74.

RESEARCH USE

For research use only, not for use in diagnostic procedures.



Try **Bob 1 (6F10): sc-23932** or **Bob 1 (F-9): sc-365595**, our highly recommended monoclonal alternatives to Bob 1 (C-20).