

Gas1 (M-18): sc-9586

BACKGROUND

Growth arrest specific proteins, including Gas1 and Gas6, are activated in quiescent cells (1-4). Gas 1-induced growth arrest is mediated by p53, and Gas1 appears to be able to suppress tumor cell growth. Gas6, a ligand for the tyrosine kinase receptor Axl, was initially identified as a member of the vitamin K-dependent protein family and exhibits a high degree of amino acid sequence homology to protein S, a negative co-regulator in the coagulation pathway.

REFERENCES

1. Schneider, C., et al. 1988. Genes specifically expressed at growth arrest of mammalian cells. *Cell* 54: 787-793.
2. Del Sal, G., et al. 1992. The growth arrest-specific gene, gas1, is involved in growth suppression. *Cell* 70: 595-607.
3. Manfioletti, G., et al. 1993. The protein encoded by a growth arrest-specific gene (gas6) is a new member of the vitamin K-dependent proteins related to protein S, a negative coregulator in the blood coagulation cascade. *Mol. Cell. Biol.* 13: 4976-4985.
4. Del Sal, G., et al. 1994. Structure, function, and chromosome mapping of the growth-suppressing human homologue of the murine gas1 gene. *Proc. Natl. Acad. Sci. USA* 91: 1848-1852.
5. Del Sal, G., et al. 1995. Gas1-induced growth suppression requires a transactivation-independent p53 function. *Mol. Cell. Biol.* 15: 7152-7160.
6. Stitt, T.N., et al. 1995. The anticoagulation factor Protein S and its relative, Gas6, are ligands for the Tyro 3/Axl family of receptor tyrosine kinases. *Cell* 80: 661-670.

CHROMOSOMAL LOCATION

Genetic locus: Gas1 (mouse) mapping to 13 B2.

SOURCE

Gas1 (M-18) is an affinity purified goat polyclonal antibody raised against a peptide mapping at the N-terminus of Gas1 of mouse origin.

PRODUCT

Each vial contains 200 µg IgG in 1.0 ml of PBS with < 0.1% sodium azide and 0.1% gelatin.

Blocking peptide available for competition studies, sc-9586 P, (100 µg peptide in 0.5 ml PBS containing < 0.1% sodium azide and 0.2% BSA).

STORAGE

Store at 4° C, ****DO NOT FREEZE****. Stable for one year from the date of shipment. Non-hazardous. No MSDS required.

PROTOCOLS

See our web site at www.scbt.com or our catalog for detailed protocols and support products.

APPLICATIONS

Gas1 (M-18) is recommended for detection of Gas1 of mouse and rat origin by Western Blotting (starting dilution 1:200, dilution range 1:100-1:1000), immunofluorescence (starting dilution 1:50, dilution range 1:50-1:500) and solid phase ELISA (starting dilution 1:30, dilution range 1:30-1:3000).

Suitable for use as control antibody for Gas1 siRNA (m): sc-37436, Gas1 shRNA Plasmid (m): sc-37436-SH and Gas1 shRNA (m) Lentiviral Particles: sc-37436-V.

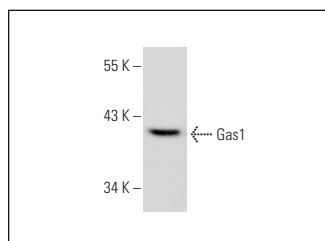
Molecular Weight of Gas1: 45 kDa.

Positive Controls: NIH/3T3 whole cell lysate: sc-2210.

RECOMMENDED SECONDARY REAGENTS

To ensure optimal results, the following support (secondary) reagents are recommended: 1) Western Blotting: use donkey anti-goat IgG-HRP: sc-2020 (dilution range: 1:2000-1:100,000) or Cruz Marker™ compatible donkey anti-goat IgG-HRP: sc-2033 (dilution range: 1:2000-1:5000), Cruz Marker™ Molecular Weight Standards: sc-2035, TBS Blotto A Blocking Reagent: sc-2333 and Western Blotting Luminol Reagent: sc-2048. 2) Immunofluorescence: use donkey anti-goat IgG-FITC: sc-2024 (dilution range: 1:100-1:400) or donkey anti-goat IgG-TR: sc-2783 (dilution range: 1:100-1:400) with UltraCruz™ Mounting Medium: sc-24941.

DATA



Gas1 (M-18): sc-9586. Western blot analysis of Gas1 expression in NIH/3T3 whole cell lysate.

RESEARCH USE

For research use only, not for use in diagnostic procedures.