

GIPC (C-20): sc-9650

BACKGROUND

GIPC, for GAIP interacting protein at the C terminus (also designated SEM-CAP-1 or synectin), is a PDZ domain containing protein that interacts with RGS-GAIP, a GTPase-activating protein (GAP) for Gai subunits. GIPC was also identified as TIP-2, a protein that interacts with the viral oncoprotein Tax, which transactivates viral and cellular promoters through interactions with various transcription factors. PDZ domain containing proteins are primarily localized to cell-cell junctions in epithelial cells and neurons where they coordinate the assembly of multiprotein complexes. GIPC specifically localizes to clusters of vesicles near the plasma membrane and participates in G protein-coupled signaling pathway involved in regulating clathrin-coated vesicular trafficking. GIPC also associates with membrane bound semaphorin F (M-SemF), which is involved in neuronal axon growth, and it appears to regulate the subcellular distribution of M-SemF in the brain.

CHROMOSOMAL LOCATION

Genetic locus: GIPC1 (human) mapping to 19p13.12; Gipc1 (mouse) mapping to 8 C2.

SOURCE

GIPC (C-20) is an affinity purified goat polyclonal antibody raised against a peptide mapping at the C-terminus of GIPC of human origin.

PRODUCT

Each vial contains 200 µg IgG in 1.0 ml of PBS with < 0.1% sodium azide and 0.1% gelatin.

Blocking peptide available for competition studies, sc-9650 P, (100 µg peptide in 0.5 ml PBS containing < 0.1% sodium azide and 0.2% BSA).

STORAGE

Store at 4° C, ****DO NOT FREEZE****. Stable for one year from the date of shipment. Non-hazardous. No MSDS required.

APPLICATIONS

GIPC (C-20) is recommended for detection of GIPC of mouse, rat and human origin by Western Blotting (starting dilution 1:200, dilution range 1:100-1:1000), immunoprecipitation [1-2 µg per 100-500 µg of total protein (1 ml of cell lysate)], immunofluorescence (starting dilution 1:50, dilution range 1:50-1:500) and solid phase ELISA (starting dilution 1:30, dilution range 1:30-1:3000).

GIPC (C-20) is also recommended for detection of GIPC in additional species, including equine, canine, bovine, porcine and avian.

Suitable for use as control antibody for GIPC siRNA (h): sc-35475, GIPC siRNA (m): sc-35476, GIPC shRNA Plasmid (h): sc-35475-SH, GIPC shRNA Plasmid (m): sc-35476-SH, GIPC shRNA (h) Lentiviral Particles: sc-35475-V and GIPC shRNA (m) Lentiviral Particles: sc-35476-V.

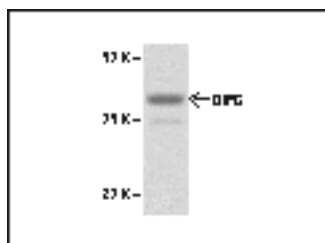
Molecular Weight of GIPC: 40 kDa.

Positive Controls: A-673 cell lysate: sc-2414 or Caki-1 cell lysate: sc-2224.

RECOMMENDED SECONDARY REAGENTS

To ensure optimal results, the following support (secondary) reagents are recommended: 1) Western Blotting: use donkey anti-goat IgG-HRP: sc-2020 (dilution range: 1:2000-1:100,000) or Cruz Marker™ compatible donkey anti-goat IgG-HRP: sc-2033 (dilution range: 1:2000-1:5000), Cruz Marker™ Molecular Weight Standards: sc-2035, TBS Blotto A Blocking Reagent: sc-2333 and Western Blotting Luminol Reagent: sc-2048. 2) Immunoprecipitation: use Protein A/G PLUS-Agarose: sc-2003 (0.5 ml agarose/2.0 ml). 3) Immunofluorescence: use donkey anti-goat IgG-FITC: sc-2024 (dilution range: 1:100-1:400) or donkey anti-goat IgG-TR: sc-2783 (dilution range: 1:100-1:400) with UltraCruz™ Mounting Medium: sc-24941.

DATA



GIPC (C-20) sc-9650. Western blot analysis of GIPC expression in G412 cells of HepG2.

SELECT PRODUCT CITATIONS

- Garzon, J., et al. 2004. RGSZ1 and GAIP regulate μ - but not δ -opioid receptors in mouse CNS: role in tachyphylaxis and acute tolerance. *Neuropsychopharmacology* 29: 1091-1104.

RESEARCH USE

For research use only, not for use in diagnostic procedures.

PROTOCOLS

See our web site at www.scbt.com or our catalog for detailed protocols and support products.

MONOS
Satisfaction
Guaranteed

Try **GIPC (B-12): sc-271822** or **GIPC (B-6): sc-376697**, our highly recommended monoclonal alternatives to GIPC (C-20).