

G2A (K-18): sc-9693

BACKGROUND

G2A (for G2 accumulation) is a seven transmembrane G protein-coupled receptor that is up-regulated in response to DNA damage and stress. G2A is predominantly expressed in hematopoietic tissues and in hematopoietic stem cells, and it is more highly detected in pro-B cells, while lower expression is observed in immature B cells and pre-B cells. G2A is expressed throughout T cell maturation, and it is further increased in response to T cell activation. Ectopic expression of a G2A fusion protein in NIH/3T3 fibroblasts induces a cell cycle arrest that is consistent with a block at the G₂/M transition. G2A is also able to attenuate the proliferative effects of Bcr-Abl, a chimeric tyrosine kinase oncogene, suggesting that G2A possesses anti-oncogenic properties. The amino acid sequence of G2A contains a destruction box motif that is consistently observed in cyclins, where it is required for ubiquitination and proteolytic degradation.

REFERENCES

1. Bedi, A., Barber, J.P., Bedi, G.C., el-Deiry, W.S., Sidransky, D., Vala, M.S., Akhtar, A.J., Hilton, J. and Jones, R.J. 1995. BCR-ABL-mediated inhibition of apoptosis with delay of G₂/M transition after DNA damage: a mechanism of resistance to multiple anticancer agents. *Blood* 86:1148-1158.
2. Hochstrasser, M. 1996. Ubiquitin-dependent protein degradation. *Annu. Rev. Genet.* 30: 405-439.
3. Allday, M.J., Inman, G.J., Crawford, D.H. and Farrell, P.J. 1995. DNA damage in human B cells can induce apoptosis, proceeding from G₁/S when p53 is transactivation competent and G₂/M when it is transactivation defective. *EMBO J.* 14: 4994-5005.
4. Weng, Z., Fluckiger, A.C., Nisitani, S., Wahl, M.I., Le, L.Q., Hunter, C.A., Fernal, A.A., Le Beau, M.M. and Witte, O.N. 1998. A DNA damage and stress inducible G protein-coupled receptor blocks cells in G₂/M. *Proc. Natl. Acad. Sci. USA* 95: 12334-12339.
5. Shimizu, A., Nishida, J., Ueoka, Y., Kato, K., Hachiya, T., Kuriaki, Y. and Wake, N. 1998. CyclinG contributes to G₂/M arrest of cells in response to DNA damage. *Biochem. Biophys. Res. Commun.* 242: 529-533.
6. Aguda, B.D. 1999. A quantitative analysis of the kinetics of the G₂ DNA damage checkpoint system. *Proc. Natl. Acad. Sci. USA* 96: 11352-11357.

SOURCE

G2A (K-18) is an affinity purified goat polyclonal antibody raised against a peptide mapping near the C-terminus of G2A of mouse origin.

PRODUCT

Each vial contains 200 µg IgG in 1.0 ml of PBS with < 0.1% sodium azide and 0.1% gelatin.

Blocking peptide available for competition studies, sc-9693 P, (100 µg peptide in 0.5 ml PBS containing < 0.1% sodium azide and 0.2% BSA).

STORAGE

Store at 4° C, **DO NOT FREEZE**. Stable for one year from the date of shipment. Non-hazardous. No MSDS required.

APPLICATIONS

G2A (K-18) is recommended for detection of G2A of mouse and rat origin by Western Blotting (starting dilution 1:200, dilution range 1:100-1:1000), immunoprecipitation [1-2 µg per 100-500 µg of total protein (1 ml of cell lysate)], immunofluorescence (starting dilution 1:50, dilution range 1:50-1:500) and solid phase ELISA (starting dilution 1:30, dilution range 1:30-1:3000).

Suitable for use as control antibody for G2A siRNA (m): sc-44371, G2A shRNA Plasmid (m): sc-44371-SH and G2A shRNA (m) Lentiviral Particles: sc-44371-V.

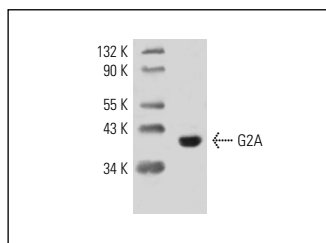
Molecular Weight of G2A: 42-46 kDa.

Positive Controls: WEHI-231 whole cell lysate: sc-2213 or rat skeletal muscle tissue extract: sc-364810.

RECOMMENDED SECONDARY REAGENTS

To ensure optimal results, the following support (secondary) reagents are recommended: 1) Western Blotting: use donkey anti-goat IgG-HRP: sc-2020 (dilution range: 1:2000-1:100,000) or Cruz Marker™ compatible donkey anti-goat IgG-HRP: sc-2033 (dilution range: 1:2000-1:5000), Cruz Marker™ Molecular Weight Standards: sc-2035, TBS Blotto A Blocking Reagent: sc-2333 and Western Blotting Luminol Reagent: sc-2048. 2) Immunoprecipitation: use Protein A/G PLUS-Agarose: sc-2003 (0.5 ml agarose/2.0 ml). 3) Immunofluorescence: use donkey anti-goat IgG-FITC: sc-2024 (dilution range: 1:100-1:400) or donkey anti-goat IgG-TR: sc-2783 (dilution range: 1:100-1:400) with UltraCruz™ Mounting Medium: sc-24941.

DATA



G2A (K-18): sc-9693. Western blot analysis of G2A expression in rat skeletal muscle tissue extract.

RESEARCH USE

For research use only, not for use in diagnostic procedures.

MONOS
Satisfaction
Guaranteed

Try **G2A (G-5): sc-137112**, our highly recommended monoclonal alternative to G2A (K-18).