

RGS11 (A-20): sc-9723

BACKGROUND

Heterotrimeric G proteins function to relay information from cell surface receptors to various intracellular effectors. G proteins comprise α , β and γ subunits, and following activation the α subunit binds GTP and dissociates from the $\beta\gamma$ complex. A large group of proteins have been identified as GTPase-activating proteins (GAPs), including the RGS (regulator of G protein signaling) family, which serve to deactivate specific G_{α} isoforms by increasing the rate at which they convert GTP to GDP. A subfamily of RGS proteins expressed in the central nervous system contain, in addition to the highly conserved RGS domain, a characteristic GGL domain, or G protein γ subunit-like domain, which mediates binding to $G_{\beta 5}$ subunits. This subfamily, which includes RGS6, RGS7, RGS9 and RGS11, associates with $G_{\beta 5}$ to form active GAP complexes that are predominantly localized to the cytosol. RGS/ $\beta 5$ complexes preferentially target $G_{\alpha o}$ subunit for hydrolysis and inhibit $G_{\beta 1\gamma 2}$ -mediated activation of phospholipase C.

REFERENCES

- Conklin, B.R. and Bourne, H.R. 1993. Structural elements of G alpha subunits that interact with G beta gamma, receptors, and effectors. *Cell* 73: 631-641.
- Snow, B.E., Krumins, A.M., Brothers, G.M., Lee, S.F., Wall, M.A., Chung, S., Mangion, J., Arya, S., Gilman, A.G., and Siderovski, D.P. 1998. A G protein gamma subunit-like domain shared between RGS11 and other RGS proteins specifies binding to Gbeta5 subunits. *Proc. Natl. Acad. Sci. USA* 95: 13307-13312.
- Thomas, E.A., Danielson, P.E., and Sutcliffe, J.G. 1998. RGS9: a regulator of G-protein signalling with specific expression in rat and mouse striatum. *J. Neurosci. Res.* 52: 118-124.
- Guan, K.L. and Han, M. 1999. A G-protein signaling network mediated by an RGS protein. *Genes Dev.* 13: 1763-1767.
- Hepler, J.R. 1999. Emerging roles for RGS proteins in cell signalling. *Trends Pharmacol. Sci.* 20: 376-382.
- Posner, B.A., et al. 1999. Regulators of G protein signaling 6 and 7. Purification of complexes with Gbeta5 and assessment of their effects on G protein-mediated signalin pathways. *J. Biol. Chem.* 274: 31087-31093.
- Snow, B.E., Betts, J.L., Mangion, J., Sondek, J., and Siderovski, D.P. 1999. Fidelity of G protein beta-subunit association by the G protein gamma-subunit-like domains of RGS6, RGS7, and RGS11. *Proc. Natl. Acad. Sci. USA* 96: 6489-6494.

SOURCE

RGS11 (A-20) is an affinity purified goat polyclonal antibody raised against a peptide mapping near the C-terminus of RGS11 of human origin.

PRODUCT

Each vial contains 200 μ g IgG in 1.0 ml of PBS with < 0.1% sodium azide and 0.1% gelatin.

Blocking peptide available for competition studies, sc-9723 P, (100 μ g peptide in 0.5 ml PBS containing < 0.1% sodium azide and 0.2% BSA).

APPLICATIONS

RGS11 (A-20) is recommended for detection of RGS11 of human and, to a lesser extent, m and r origin by Western Blotting (starting dilution 1:200, dilution range 1:100-1:1000), immunoprecipitation [1-2 μ g per 100-500 μ g of total protein (1 ml of cell lysate)], immunofluorescence (starting dilution 1:50, dilution range 1:50-1:500) and solid phase ELISA (starting dilution 1:30, dilution range 1:30-1:3000).

Suitable for use as control antibody for RGS11 siRNA (h): sc-40669.

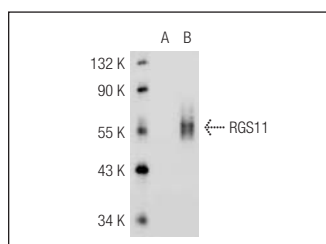
Molecular Weight of RGS11: 50 kDa.

Positive Controls: mouse brain extract: sc-2253, SK-N-SH cell lysate: sc-2410 or IMR-32 cell lysate: sc-2409.

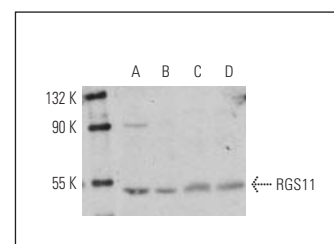
RECOMMENDED SECONDARY REAGENTS

To ensure optimal results, the following support (secondary) reagents are recommended: 1) Western Blotting: use donkey anti-goat IgG-HRP: sc-2020 (dilution range: 1:2000-1:100,000) or Cruz Marker™ compatible donkey anti-goat IgG-HRP: sc-2033 (dilution range: 1:2000-1:5000), Cruz Marker™ Molecular Weight Standards: sc-2035, TBS Blotto A Blocking Reagent: sc-2333 and Western Blotting Luminol Reagent: sc-2048. 2) Immunoprecipitation: use Protein A/G PLUS-Agarose: sc-2003 (0.5 ml agarose/ 2.0 ml). 3) Immunofluorescence: use donkey anti-goat IgG-FITC: sc-2024 (dilution range: 1:100-1:400) or donkey anti-goat IgG-TR: sc-2783 (dilution range: 1:100-1:400) with UltraCruz™ Mounting Medium: sc-24941.

DATA



RGS11 (A-20): sc-9723. Western blot analysis of RGS11 expression in non-transfected: sc-117752 (A) and mouse RGS11 transfected: sc-123098 (B) 293T whole cell lysates.



RGS11 (A-20): sc-9723. Western blot analysis of RGS11 expression in SK-N-SH (A) and IMR-32 (B) whole cell lysates and rat (C) and mouse brain (D) tissue extracts.

STORAGE

Store at 4° C, **DO NOT FREEZE**. Stable for one year from the date of shipment. Non-hazardous. No MSDS required.

RESEARCH USE

For research use only, not for use in diagnostic procedures.

PROTOCOLS

See our web site at www.scbt.com or our catalog for detailed protocols and support products.