

# Med30 (A-19): sc-98002

## BACKGROUND

Med30 is a subunit of the RNA polymerase II (Pol II) transcriptional mediator complex. The mediator complex is a coactivator involved in the regulated transcription of Pol II-dependent genes. The mediator complex functions as a bridge to convey information from gene-specific regulatory proteins to the basal Pol II transcription machinery, and is recruited to promoter regions by directly interacting with regulatory proteins. The mediator complex also serves as a scaffold for the assembly of a functional pre-initiation complex with Pol II and other general transcription factors. Found in the nucleus, Med30 is expressed in brain, heart, kidney, liver, lung, pancreas, placenta and skeletal muscle.

## CHROMOSOMAL LOCATION

Genetic locus: MED30 (human) mapping to 8q24.11; Med30 (mouse) mapping to 15 C.

## SOURCE

Med30 (A-19) is an affinity purified goat polyclonal antibody raised against a peptide mapping within an internal region of Med30 of human origin.

## PRODUCT

Each vial contains 200 µg IgG in 1.0 ml of PBS with < 0.1% sodium azide and 0.1% gelatin.

Blocking peptide available for competition studies, sc-98002 P, (100 µg peptide in 0.5 ml PBS containing < 0.1% sodium azide and 0.2% BSA).

## STORAGE

Store at 4° C, \*\*DO NOT FREEZE\*\*. Stable for one year from the date of shipment. Non-hazardous. No MSDS required.

## APPLICATIONS

Med30 (A-19) is recommended for detection of Med30 of mouse, rat and human origin by Western Blotting (starting dilution 1:200, dilution range 1:100-1:1000), immunoprecipitation [1-2 µg per 100-500 µg of total protein (1 ml of cell lysate)], immunofluorescence (starting dilution 1:50, dilution range 1:50-1:500) and solid phase ELISA (starting dilution 1:30, dilution range 1:30-1:3000); non cross-reactive with other Med family members.

Med30 (A-19) is also recommended for detection of Med30 in additional species, including equine, canine, bovine and porcine.

Suitable for use as control antibody for Med30 siRNA (h): sc-77529, Med30 siRNA (m): sc-149355, Med30 shRNA Plasmid (h): sc-77529-SH, Med30 shRNA Plasmid (m): sc-149355-SH, Med30 shRNA (h) Lentiviral Particles: sc-77529-V and Med30 shRNA (m) Lentiviral Particles: sc-149355-V.

Molecular Weight (predicted) of Med30: 20 kDa.

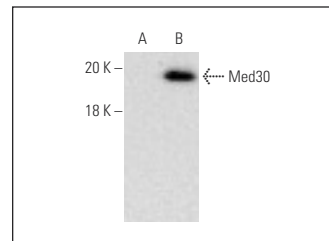
Molecular Weight (observed) of Med30: 24-30 kDa.

Positive Controls: Med30 (h2): 293T Lysate: sc-174753 or K-562 nuclear extract: sc-2130.

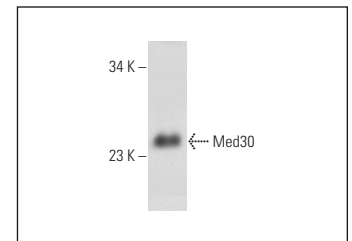
## RECOMMENDED SECONDARY REAGENTS

To ensure optimal results, the following support (secondary) reagents are recommended: 1) Western Blotting: use donkey anti-goat IgG-HRP: sc-2020 (dilution range: 1:2000-1:100,000) or Cruz Marker™ compatible donkey anti-goat IgG-HRP: sc-2033 (dilution range: 1:2000-1:5000), Cruz Marker™ Molecular Weight Standards: sc-2035, TBS Blotto A Blocking Reagent: sc-2333 and Western Blotting Luminol Reagent: sc-2048. 2) Immunoprecipitation: use Protein A/G PLUS-Agarose: sc-2003 (0.5 ml agarose/2.0 ml). 3) Immunofluorescence: use donkey anti-goat IgG-FITC: sc-2024 (dilution range: 1:100-1:400) or donkey anti-goat IgG-TR: sc-2783 (dilution range: 1:100-1:400) with UltraCruz™ Mounting Medium: sc-24941.

## DATA



Med30 (A-19): sc-98002. Western blot analysis of Med30 expression in non-transfected: sc-117752 (A) and human Med30 transfected: sc-174753 (B) 293T whole cell lysates.



Med30 (A-19): sc-98002. Western blot analysis of Med30 expression in K-562 nuclear extract.

## RESEARCH USE

For research use only, not for use in diagnostic procedures.

## PROTOCOLS

See our web site at [www.scbt.com](http://www.scbt.com) or our catalog for detailed protocols and support products.



Try **Med30 (C-6): sc-393289** or **Med30 (A-11): sc-374480**, our highly recommended monoclonal alternatives to Med30 (A-19).