

Speriolin (N-20): sc-98147

BACKGROUND

Speriolin, also known as SPATC1 (spermatogenesis and centriole associated 1) or SPATA15 (spermatogenesis-associated protein 15), is a 591 amino acid cytoplasmic protein expressed in testis that is part of a complex that includes p55 CDC, Cdc27 and γ Tubulin. The gene encoding Speriolin is located on human chromosome 8, which consists of nearly 146 million base pairs, houses more than 800 genes and is associated with a variety of diseases and malignancies. Schizophrenia, bipolar disorder, Trisomy 8, Pfeiffer syndrome, congenital hypothyroidism, Waardenburg syndrome and some leukemias and lymphomas are thought to occur as a result of defects in specific genes that map to chromosome 8.

REFERENCES

- Wildenauer, D.B., et al. 1999. Chromosomes 8 and 10 workshop. *Am. J. Med. Genet.* 88: 239-243.
- Kashino, G., et al. 2001. Preferential expression of an intact WRN gene in Werner syndrome cell lines in which a normal chromosome 8 has been introduced. *Biochem. Biophys. Res. Commun.* 289: 111-115.
- Goto, M., et al. 2004. Speriolin is a novel spermatogenic cell-specific centrosomal protein associated with the seventh WD motif of Cdc20. *J. Biol. Chem.* 279: 42128-42138.
- McQueen, M.B., et al. 2005. Combined analysis from eleven linkage studies of bipolar disorder provides strong evidence of susceptibility loci on chromosomes 6q and 8q. *Am. J. Hum. Genet.* 77: 582-595.
- Nusbaum, C., et al. 2006. DNA sequence and analysis of human chromosome 8. *Nature* 439: 331-335.
- Online Mendelian Inheritance in Man, OMIM™. 2007. Johns Hopkins University, Baltimore, MD. MIM Number: 610874. World Wide Web URL: <http://www.ncbi.nlm.nih.gov/omim/>
- Redon, E., et al. 2010. Stage-specific gene expression during spermatogenesis in the dogfish (*Scyliorhinus canicula*). *Reproduction* E-Published.

CHROMOSOMAL LOCATION

Genetic locus: SPATC1 (human) mapping to 8q24.3.

SOURCE

Speriolin (N-20) is an affinity purified goat polyclonal antibody raised against a peptide mapping near the N-terminus of Speriolin of human origin.

PRODUCT

Each vial contains 200 μ g IgG in 1.0 ml of PBS with < 0.1% sodium azide and 0.1% gelatin.

Blocking peptide available for competition studies, sc-98147 P, (100 μ g peptide in 0.5 ml PBS containing < 0.1% sodium azide and 0.2% BSA).

STORAGE

Store at 4° C, **DO NOT FREEZE**. Stable for one year from the date of shipment. Non-hazardous. No MSDS required.

APPLICATIONS

Speriolin (N-20) is recommended for detection of Speriolin of human origin by Western Blotting (starting dilution 1:200, dilution range 1:100-1:1000), immunoprecipitation [1-2 μ g per 100-500 μ g of total protein (1 ml of cell lysate)], immunofluorescence (starting dilution 1:50, dilution range 1:50-1:500) and solid phase ELISA (starting dilution 1:30, dilution range 1:30-1:3000).

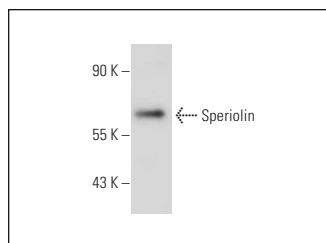
Suitable for use as control antibody for Speriolin siRNA (h): sc-77474, Speriolin shRNA Plasmid (h): sc-77474-SH and Speriolin shRNA (h) Lentiviral Particles: sc-77474-V.

Molecular Weight of Speriolin: 62 kDa.

RECOMMENDED SECONDARY REAGENTS

To ensure optimal results, the following support (secondary) reagents are recommended: 1) Western Blotting: use donkey anti-goat IgG-HRP: sc-2020 (dilution range: 1:2000-1:100,000) or Cruz Marker™ compatible donkey anti-goat IgG-HRP: sc-2033 (dilution range: 1:2000-1:5000), Cruz Marker™ Molecular Weight Standards: sc-2035, TBS Blotto A Blocking Reagent: sc-2333 and Western Blotting Luminol Reagent: sc-2048. 2) Immunoprecipitation: use Protein A/G PLUS-Agarose: sc-2003 (0.5 ml agarose/2.0 ml). 3) Immunofluorescence: use donkey anti-goat IgG-FITC: sc-2024 (dilution range: 1:100-1:400) or donkey anti-goat IgG-TR: sc-2783 (dilution range: 1:100-1:400) with UltraCruz™ Mounting Medium: sc-24941.

DATA



Speriolin (N-20): sc-98147. Western blot analysis of Speriolin expression in mouse heart tissue extract.

RESEARCH USE

For research use only, not for use in diagnostic procedures.

PROTOCOLS

See our web site at www.scbt.com or our catalog for detailed protocols and support products.