

Matrilin-3 (H-70): sc-98248

BACKGROUND

The matrilin family of secreted extracellular matrix proteins is comprised of Matrilin-1 through Matrilin-4. Matrilin-1 is a homotrimer that binds to collagen and is a component of the extracellular matrix of nonarticular cartilage. It is secreted primarily by chondrocytes in a characteristic spatial, temporal and developmental stage-specific pattern during skeletogenesis. Matrilin-2 is a secreted protein involved in matrix assembly. Matrilin-3 is a secreted protein expressed solely in cartilaginous tissues. It is important in the extracellular matrix of cartilage and in the formation of extracellular filamentous networks. Matrilin-4, expressed in embryonic kidney, lung and placenta, is a secreted protein important to the extracellular matrix of cartilage.

REFERENCES

- Deak, F., et al. 1999. The matrilins: a novel family of oligomeric extracellular matrix proteins. *Matrix Biol.* 18: 55-64.
- Segat, D., et al. 2000. Expression of Matrilin-1, -2 and -3 in developing mouse limbs and heart. *Matrix Biol.* 19: 649-655.
- Strusberg, I., et al. 2002. Association analysis of genotypic frequencies of Matrilin-1 gene in patients with osteoarthritis. *Clin. Exp. Rheumatol.* 20: 543-545.
- Wiberg, C., et al. 2003. Complexes of Matrilin-1 and biglycan or decorin connect collagen VI microfibrils to both collagen II and aggrecan. *J. Biol. Chem.* 278: 37698-37704.
- Ohno, S., et al. 2003. Immunohistochemical study of Matrilin-1 in arthritic articular cartilage of the mandibular condyle. *J. Oral Pathol. Med.* 32: 237-242.
- Mann H.H., et al. 2004. Interactions between the cartilage oligomeric matrix protein and matrilins. Implications for matrix assembly and the pathogenesis of chondrodysplasias. *J. Biol. Chem.* 279: 25294-25298.
- Karcagi, I., et al. 2004. Functional analysis of the regulatory regions of the Matrilin-1 gene in transgenic mice reveals modular arrangement of tissue-specific control elements. *Matrix Biol.* 22: 605-618.
- Hansson, A.S., et al. 2004. Critical role of the major histocompatibility complex and IL-10 in matrilin-1-induced relapsing polychondritis in mice. *Arthritis Res. Ther.* 6: 484-491.
- Hansson, A.S., et al. 2004. Relapsing polychondritis, induced in mice with Matrilin-1, is an antibody- and complement-dependent disease. *Am. J. Pathol.* 164: 959-966.

CHROMOSOMAL LOCATION

Genetic locus: MATN3 (human) mapping to 2p24.1; Matn3 (mouse) mapping to 12 A1.1.

SOURCE

Matrilin-3 (H-70) is a rabbit polyclonal antibody raised against amino acids 241-310 mapping within an internal region of Matrilin-3 of human origin.

PRODUCT

Each vial contains 200 µg IgG in 1.0 ml of PBS with < 0.1% sodium azide and 0.1% gelatin.

APPLICATIONS

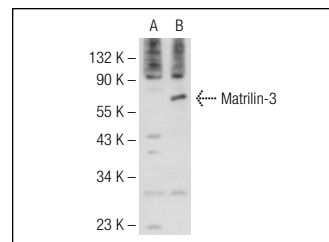
Matrilin-3 (H-70) is recommended for detection of Matrilin-3 of mouse, rat and human origin by Western Blotting (starting dilution 1:200, dilution range 1:100-1:1000), immunoprecipitation [1-2 µg per 100-500 µg of total protein (1 ml of cell lysate)], immunofluorescence (starting dilution 1:50, dilution range 1:50-1:500) and solid phase ELISA (starting dilution 1:30, dilution range 1:30-1:3000).

Matrilin-3 (H-70) is also recommended for detection of Matrilin-3 in additional species, including equine, canine, bovine and porcine.

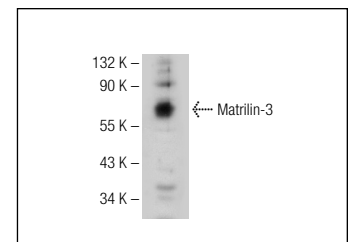
Suitable for use as control antibody for Matrilin-3 siRNA (h): sc-106205, Matrilin-3 siRNA (m): sc-149297, Matrilin-3 shRNA Plasmid (h): sc-106205-SH, Matrilin-3 shRNA Plasmid (m): sc-149297-SH, Matrilin-3 shRNA (h) Lentiviral Particles: sc-106205-V and Matrilin-3 shRNA (m) Lentiviral Particles: sc-149297-V.

Positive Controls: Matrilin-3 (m): 293T Lysate: sc-121531 or HeLa whole cell lysate: sc-2200.

DATA



Matrilin-3 (H-70): sc-98248. Western blot analysis of Matrilin-3 expression in non-transfected: sc-117752 (A) and mouse Matrilin-3 transfected: sc-121531 (B) 293T whole cell lysates.



Matrilin-3 (H-70): sc-98248. Western blot analysis of Matrilin-3 expression in HeLa whole cell lysate.

STORAGE

Store at 4° C, ****DO NOT FREEZE****. Stable for one year from the date of shipment. Non-hazardous. No MSDS required.

RESEARCH USE

For research use only, not for use in diagnostic procedures.

PROTOCOLS

See our web site at www.scbt.com or our catalog for detailed protocols and support products.