

synphilin-1 (H-300): sc-98296

BACKGROUND

Synphilin-1 (α -synuclein interacting protein, SNCAIP) is a 919-amino acid protein that associates with α -synuclein and promotes the formation of cytosolic inclusions in neuronal cells. The synuclein family members, including α -synuclein and β -synuclein, are predominantly expressed in the brain where they influence synaptic regulation and neuronal plasticity. Synphilin-1 contains modular protein domains, such as ankyrin-like repeats and a coiled-coil domain. While both α -synuclein and synphilin-1 are coexpressed in Lewy bodies of patients with Parkinson's disease (PD), only mutations in the gene for α -synuclein have been determined to confer pathogenicity.

REFERENCES

1. Ueda, K., Fukushima, H., Masliah, E., Xia, Y., Iwai, A., Yoshimoto, M., Otero, D.A., Kondo, J., Ihara, Y. and Saitoh, T. 1993. Molecular cloning of cDNA encoding an unrecognized component of amyloid in Alzheimer disease. *Proc. Natl. Acad. Sci. USA* 90: 11282-11286.
2. Jakes, R., Spillantini, M. and Goedert, M. 1994. Identification of two distinct synucleins from human brain. *FEBS Lett.* 345: 27-32.
3. Engelender, S., Kaminsky, Z., Guo, X., Sharp, A.H., Amaravi, R.K., Kleiderlein, J.J., Margolis, R.L., Troncoso, J.C., Lanahan, A.A., Worley, P.F., Dawson, V.L., Dawson, T.M. and Ross, C.A. 1999. Synphilin-1 associates with α -synuclein and promotes the formation of cytosolic inclusions. *Nat. Genet.* 22: 110-114.
4. Wakabayashi, K., Engelender, S., Yoshimoto, M., Tsuji, S., Ross, C.A. and Takahashi, H. 2000. Synphilin-1 is present in Lewy bodies in Parkinson's disease. *Ann. Neurol.* 47: 521-553.
5. Online Mendelian Inheritance in Man, OMIM™. 2000. Johns Hopkins University, Baltimore, MD. MIM Number: 603779. World Wide Web URL: <http://www.ncbi.nlm.nih.gov/omim/>
6. Kawamata, H., McLean, P.J., Sharma, N. and Hyman, B. T. 2001. Interaction of α -synuclein and synphilin-1: effect of Parkinson's disease-associated mutations. *J. Neurochem.* 77: 929-934.
7. Farrer, M., Destee, A., Levecque, C., Singleton, A., Engelender, S., Becquet, E., Mouroux, V., Richard, F., Defebvre, L., Crook, R., Hernandez, D., Ross, C.A., Hardy, J., Amouyel, P. and Chartier-Harlin, M.C. 2001. Genetic analysis of synphilin-1 in familial Parkinson's disease. *Neurobiol. Dis.* 8: 317-323.

CHROMOSOMAL LOCATION

Genetic locus: SNCAIP (human) mapping to 5q23.2; Sncaip (mouse) mapping to 18 D1.

SOURCE

synphilin-1 (H-300) is a rabbit polyclonal antibody raised against amino acids 1-300 mapping at the N-terminus of synphilin-1 of human origin.

PRODUCT

Each vial contains 200 μ g IgG in 1.0 ml of PBS with < 0.1% sodium azide and 0.1% gelatin.

APPLICATIONS

synphilin-1 (H-300) is recommended for detection of synphilin-1 of mouse, rat and human origin by Western Blotting (starting dilution 1:200, dilution range 1:100-1:1000), immunoprecipitation [1-2 μ g per 100-500 μ g of total protein (1 ml of cell lysate)], immunofluorescence (starting dilution 1:50, dilution range 1:50-1:500) and solid phase ELISA (starting dilution 1:30, dilution range 1:30-1:3000).

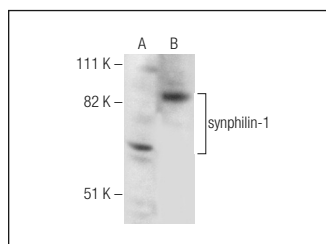
synphilin-1 (H-300) is also recommended for detection of synphilin-1 in additional species, including equine, canine and porcine.

Suitable for use as control antibody for synphilin-1 siRNA (h): sc-43434, synphilin-1 siRNA (m): sc-45293, synphilin-1 shRNA Plasmid (h): sc-43434-SH, synphilin-1 shRNA Plasmid (m): sc-45293-SH, synphilin-1 shRNA (h) Lentiviral Particles: sc-43434-V and synphilin-1 shRNA (m) Lentiviral Particles: sc-45293-V.

Molecular Weight of synphilin-1: 100 kDa.

Positive Controls: IMR-32 cell lysate: sc-2409 or mouse brain extract: sc-2253.

DATA



synphilin-1 (H-300): sc-98296. Western blot analysis of synphilin-1 expression in IMR-32 whole cell lysate (A) and mouse brain tissue extract (B).

STORAGE

Store at 4° C, **DO NOT FREEZE** Stable for one year from the date of shipment. Non-hazardous. No MSDS required.

RESEARCH USE

For research use only, not for use in diagnostic procedures.

PROTOCOLS

See our web site at www.scbt.com or our catalog for detailed protocols and support products.

MONOS
Satisfaction
Guaranteed

Try **synphilin-1 (F-9): sc-365741**, our highly recommended monoclonal alternative to synphilin-1 (H-300).