

# BMAL2 (H-166): sc-98300

## BACKGROUND

BMAL2, also known as ARNTL2 (aryl hydrocarbon receptor nuclear translocator-like 2), MOP9, CLIF or PASD9, is a 636 amino acid protein that localizes to the nucleus and contains one bHLH (basic helix-loop-helix) domain, one PAC (PAS-associated C-terminal) domain and 2 PAS (PER-ARNT-SIM) domains. Expressed at high levels in placenta and brain and at lower levels in liver, thymus, heart, lung and kidney, BMAL2 functions as a component of the circadian core oscillator, which includes a variety of proteins that work in tandem to activate the transcription of target genes. More specifically, BMAL2, when functioning as a component of the core oscillator, binds to the E-box element (3'-CACGTG-5') of target DNA, thus inducing transcription. Multiple isoforms of BMAL2 exist due to alternative splicing events.

## REFERENCES

- Ikeda, M., et al. 2000. cDNA cloning of a novel bHLH-PAS transcription factor superfamily gene, BMAL2: its mRNA expression, subcellular distribution, and chromosomal localization. *Biochem. Biophys. Res. Commun.* 275: 493-502.
- Maemura, K., et al. 2000. CLIF, a novel cycle-like factor, regulates the circadian oscillation of plasminogen activator inhibitor-1 gene expression. *J. Biol. Chem.* 275: 36847-36851.
- Hogenesch, J.B., et al. 2000. The basic helix-loop-helix-PAS protein MOP9 is a brain-specific heterodimeric partner of circadian and hypoxia factors. *J. Neurosci.* 20: RC83.
- Okano, T., et al. 2001. Chicken pineal clock genes: implication of BMAL2 as a bidirectional regulator in circadian clock oscillation. *Genes Cells* 6: 825-836.
- Schoenhard, J.A., et al. 2002. Alternative splicing yields novel BMAL2 variants: tissue distribution and functional characterization. *Am. J. Physiol., Cell Physiol.* 283: C103-C114.
- Dardente, H. and Cermakian, N. 2007. Molecular circadian rhythms in central and peripheral clocks in mammals. *Chronobiol. Int.* 24: 195-213.
- Shi, J., et al. 2008. Clock genes may influence bipolar disorder susceptibility and dysfunctional circadian rhythm. *Am. J. Med. Genet. B Neuropsychiatr. Genet.* 147B: 1047-1055.
- Ciarleglio, C.M., et al. 2008. Genetic differences in human circadian clock genes among worldwide populations. *J. Biol. Rhythms* 23: 330-340.
- Onishi, Y., et al. 2008. Rhythmic SAF-A binding underlies circadian transcription of the BMAL1 gene. *Mol. Cell. Biol.* 28: 3477-3488.

## CHROMOSOMAL LOCATION

Genetic locus: ARNTL2 (human) mapping to 12p11.23.

## SOURCE

BMAL2 (H-166) is a rabbit polyclonal antibody raised against amino acids 471-636 mapping at the C-terminus of BMAL2 of human origin.

## PRODUCT

Each vial contains 200 µg IgG in 1.0 ml of PBS with < 0.1% sodium azide and 0.1% gelatin. Also available as TransCruz reagent for Gel Supershift and ChIP applications, sc-98300 X, 200 µg/0.1 ml.

## APPLICATIONS

BMAL2 (H-166) is recommended for detection of BMAL2 of human origin by Western Blotting (starting dilution 1:200, dilution range 1:100-1:1000), immunoprecipitation [1-2 µg per 100-500 µg of total protein (1 ml of cell lysate)], immunofluorescence (starting dilution 1:50, dilution range 1:50-1:500) and solid phase ELISA (starting dilution 1:30, dilution range 1:30-1:3000).

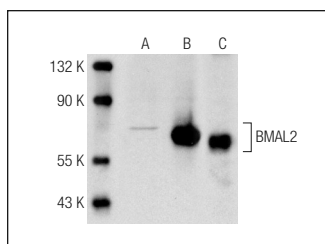
Suitable for use as control antibody for BMAL2 siRNA (h): sc-95746, BMAL2 shRNA Plasmid (h): sc-95746-SH and BMAL2 shRNA (h) Lentiviral Particles: sc-95746-V.

BMAL2 (H-166) X TransCruz antibody is recommended for Gel Supershift and ChIP applications.

Molecular Weight of BMAL2: 71 kDa.

Positive Controls: BMAL2 (h): 293 Lysate: sc-110662, MCF7 whole cell lysate: sc-2206 or Hep G2 nuclear extract: sc-364819.

## DATA



BMAL2 (H-166): sc-98300. Western blot analysis of BMAL2 expression in non-transfected: sc-110760 (A) and human BMAL2 transfected: sc-110662 (B) 293 whole cell lysates and Hep G2 nuclear extract (C).

## STORAGE

Store at 4° C, **\*\*DO NOT FREEZE\*\***. Stable for one year from the date of shipment. Non-hazardous. No MSDS required.

## RESEARCH USE

For research use only, not for use in diagnostic procedures.

**MONOS**  
Satisfaction  
Guaranteed

Try **BMAL2 (C-7): sc-376287** or **BMAL2 (C-11): sc-365469**, our highly recommended monoclonal alternatives to BMAL2 (H-166).