

COMMD5 (FL-224): sc-98314

BACKGROUND

COMMD family members are a group of evolutionary conserved proteins that share a common COMM domain at the extreme C-terminus, which provides an interface for protein-protein interactions. Most, if not all, COMMD proteins have been found to play a role in the regulation of NF κ B and, despite their similarities, seem to function in unique and non-redundant pathways. COMMD proteins may also play a role in the function of epithelial sodium channels, cell proliferation, copper homeostasis and in the regulation of the ubiquitin pathway. As a member of the COMMD family, COMMD5 (COMM domain-containing protein 5), also known as HCaRG (hypertension-related calcium-regulated gene protein), is a 224 amino acid protein that is negatively regulated by extracellular calcium concentrations. Due to lower proliferation rates observed in COMMD5-transfected HEK293 cells, it is suggested that COMMD5 may play a regulatory role in cell proliferation. COMMD5 is localized to the nucleus and is expressed in stomach, liver, kidney, heart, adrenal gland and jejunum, with higher levels of mRNA expression found in hypertensive animals.

REFERENCES

- Solban, N., et al. 2000. HCaRG, a novel calcium-regulated gene coding for a nuclear protein, is potentially involved in the regulation of cell proliferation. *J. Biol. Chem.* 275: 32234-32243.
- Solban, N., et al. 2002. Chromosomal mapping of HCaRG, a novel hypertension-related, calcium-regulated gene. *Folia Biol.* 48: 9-14.
- Devlin, A.M., et al. 2003. HCaRG is a novel regulator of renal epithelial cell growth and differentiation causing G2M arrest. *Am. J. Physiol. Renal Physiol.* 284: F753-F762.
- de Bie, P., et al. 2006. Characterization of COMMD protein-protein interactions in NF κ B signaling. *Biochem. J.* 398: 63-71.
- Maine, G.N. and Burstein, E. 2007. COMMD proteins and the control of the NF κ B pathway. *Cell Cycle* 6: 672-676.
- Maine, G.N. and Burstein, E. 2007. COMMD proteins: COMMDing to the scene. *Cell. Mol. Life Sci.* 64: 1997-2005.
- van de Sluis, B., et al. 2007. Increased activity of hypoxia-inducible factor 1 is associated with early embryonic lethality in *Comm1* null mice. *Mol. Cell Biol.* 27: 4142-4156.
- Maine, G.N., et al. 2008. COMMD1 expression is controlled by critical residues that determine XIAP binding. *Biochem. J.* 417: 601-609.

CHROMOSOMAL LOCATION

Genetic locus: COMMD5 (human) mapping to 8q24.3; *Comm5* (mouse) mapping to 15 D3.

SOURCE

COMMD5 (FL-224) is a rabbit polyclonal antibody raised against amino acids 1-224 representing full length COMMD5 of human origin.

PRODUCT

Each vial contains 200 μ g IgG in 1.0 ml of PBS with < 0.1% sodium azide and 0.1% gelatin.

APPLICATIONS

COMMD5 (FL-224) is recommended for detection of COMMD5 of mouse, rat and human origin by Western Blotting (starting dilution 1:200, dilution range 1:100-1:1000), immunoprecipitation [1-2 μ g per 100-500 μ g of total protein (1 ml of cell lysate)], immunofluorescence (starting dilution 1:50, dilution range 1:50-1:500) and solid phase ELISA (starting dilution 1:30, dilution range 1:30-1:3000).

COMMD5 (FL-224) is also recommended for detection of COMMD5 in additional species, including equine, bovine and porcine.

Suitable for use as control antibody for COMMD5 siRNA (h): sc-77657, COMMD5 siRNA (m): sc-142486, COMMD5 shRNA Plasmid (h): sc-77657-SH, COMMD5 shRNA Plasmid (m): sc-142486-SH, COMMD5 shRNA (h) Lentiviral Particles: sc-77657-V and COMMD5 shRNA (m) Lentiviral Particles: sc-142486-V.

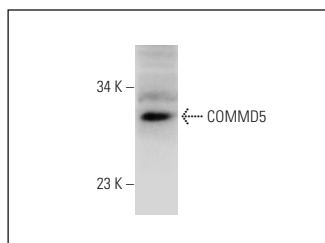
Molecular Weight of COMMD5: 27 kDa.

Positive Controls: Hep G2 cell lysate: sc-2227.

RECOMMENDED SECONDARY REAGENTS

To ensure optimal results, the following support (secondary) reagents are recommended: 1) Western Blotting: use goat anti-rabbit IgG-HRP: sc-2004 (dilution range: 1:2000-1:100,000) or Cruz Marker[™] compatible goat anti-rabbit IgG-HRP: sc-2030 (dilution range: 1:2000-1:5000), Cruz Marker[™] Molecular Weight Standards: sc-2035, TBS Blotto A Blocking Reagent: sc-2333 and Western Blotting Luminol Reagent: sc-2048. 2) Immunoprecipitation: use Protein A/G PLUS-Agarose: sc-2003 (0.5 ml agarose/2.0 ml). 3) Immunofluorescence: use goat anti-rabbit IgG-FITC: sc-2012 (dilution range: 1:100-1:400) or goat anti-rabbit IgG-TR: sc-2780 (dilution range: 1:100-1:400) with UltraCruz[™] Mounting Medium: sc-24941.

DATA



COMMD5 (FL-224): sc-98314. Western blot analysis of COMMD5 expression in Hep G2 whole cell lysate.

STORAGE

Store at 4° C, ****DO NOT FREEZE****. Stable for one year from the date of shipment. Non-hazardous. No MSDS required.

RESEARCH USE

For research use only, not for use in diagnostic procedures.