

WAPL (H-300): sc-98355

BACKGROUND

WAPL (wings apart-like), also known as WAPAL or FOE, is a 1,190 amino acid protein that contains one WAPL domain and is expressed as 2 alternatively spliced isoforms, one of which localizes to the nucleus. Expressed in an isoform-dependent manner in heart, skeletal muscle and uterine cervix tumor tissue, WAPL is involved in sister-chromatid adhesion and overall cell growth, specifically playing a role in the development and metastasis of cancerous tissue. The gene encoding WAPL maps to human chromosome 10, which houses over 1,200 genes and comprises nearly 4.5% of the human genome. Defects in some of the genes that map to chromosome 10 are associated with Charcot-Marie Tooth disease, Jackson-Weiss syndrome, Usher syndrome, nonsyndromic deafness, Wolman's syndrome, Cowden syndrome, multiple endocrine neoplasia type 2 and porphyria.

CHROMOSOMAL LOCATION

Genetic locus: WAPAL (human) mapping to 10q23.2; Wapal (mouse) mapping to 14 B.

SOURCE

WAPL (H-300) is a rabbit polyclonal antibody raised against amino acids 1-300 mapping at the N-terminus of WAPL of human origin.

PRODUCT

Each vial contains 200 µg IgG in 1.0 ml of PBS with < 0.1% sodium azide and 0.1% gelatin.

STORAGE

Store at 4° C, ****DO NOT FREEZE****. Stable for one year from the date of shipment. Non-hazardous. No MSDS required.

RESEARCH USE

For research use only, not for use in diagnostic procedures.

APPLICATIONS

WAPL (H-300) is recommended for detection of WAPL of mouse, rat and human origin by Western Blotting (starting dilution 1:200, dilution range 1:100-1:1000), immunoprecipitation [1-2 µg per 100-500 µg of total protein (1 ml of cell lysate)], immunofluorescence (starting dilution 1:50, dilution range 1:50-1:500) and solid phase ELISA (starting dilution 1:30, dilution range 1:30-1:3000).

WAPL (H-300) is also recommended for detection of WAPL in additional species, including equine, canine, bovine and porcine.

Suitable for use as control antibody for WAPL siRNA (h): sc-76910, WAPL siRNA (m): sc-76911, WAPL shRNA Plasmid (h): sc-76910-SH, WAPL shRNA Plasmid (m): sc-76911-SH, WAPL shRNA (h) Lentiviral Particles: sc-76910-V and WAPL shRNA (m) Lentiviral Particles: sc-76911-V.

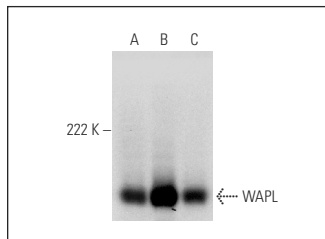
Molecular Weight of WAPL: 140 kDa.

Positive Controls: Ramos nuclear extract: sc-2153, Jurkat nuclear extract: sc-2132 or HeLa nuclear extract: sc-2120.

RECOMMENDED SECONDARY REAGENTS

To ensure optimal results, the following support (secondary) reagents are recommended: 1) Western Blotting: use goat anti-rabbit IgG-HRP: sc-2004 (dilution range: 1:2000-1:100,000) or Cruz Marker™ compatible goat anti-rabbit IgG-HRP: sc-2030 (dilution range: 1:2000-1:5000), Cruz Marker™ Molecular Weight Standards: sc-2035, TBS Blotto A Blocking Reagent: sc-2333 and Western Blotting Luminol Reagent: sc-2048. 2) Immunoprecipitation: use Protein A/G PLUS-Agarose: sc-2003 (0.5 ml agarose/2.0 ml). 3) Immunofluorescence: use goat anti-rabbit IgG-FITC: sc-2012 (dilution range: 1:100-1:400) or goat anti-rabbit IgG-TR: sc-2780 (dilution range: 1:100-1:400) with UltraCruz™ Mounting Medium: sc-24941.

DATA



WAPL (H-300): sc-98355. Western blot analysis of WAPL expression in Ramos (A), Jurkat (B) and HeLa (C) nuclear extracts.

PROTOCOLS

See our web site at www.scbt.com or our catalog for detailed protocols and support products.


 MONOS
Satisfaction
Guaranteed

Try **WAPL (A-7): sc-365189**, our highly recommended monoclonal alternative to WAPL (H-300).