

GS1 (M-234): sc-98461

BACKGROUND

The Adiponutrin family consists of Adiponutrin (ADPN), adipocyte triglyceride lipase (ATGL, also designated Desnutrin), GS1, GS2, GS2-like and PNPLA1. ADPN, ATGL and GS2 display lipase activity, which is dependent upon the presence of an activated serine residue. GS1, also designated DXF68S1E or haloacid dehalogenase-like hydrolase domain containing 1A (HDHD1A), is a 214-amino acid protein that is detected in human placenta and fibroblasts. The gene which encodes for GS1, HDHD1A, is of interest because it is an X-linked gene that escapes X-inactivation. This characteristic of the HDHD1A gene is particularly important in the understanding of human X chromosome structural organization as well as the mechanism of X-inactivation.

REFERENCES

- Salido, E.C., et al. 1992. The human enamel protein gene amelogenin is expressed from both the X and the Y chromosomes. *Am. J. Hum. Genet.* 50: 303-316.
- Yen, P.H., et al. 1993. Isolation of a new gene from the distal short arm of the human X chromosome that escapes X-inactivation. *Hum. Mol. Genet.* 1: 47-52.
- Soehnge, H., et al. 1997. Cloning and sequencing of ribosomal protein L27a and a gene similar to human GS1 in *Drosophila*. *Gene* 185: 257-263.
- Online Mendelian Inheritance in Man, OMIM™. 2002. Johns Hopkins University, Baltimore, MD. MIM Number: 306480. World Wide Web URL: <http://www.ncbi.nlm.nih.gov/omim/>
- van Noort, V., et al. 2003. Predicting gene function by conserved co-expression. *Trends Genet.* 19: 238-242.
- Wieland, I., et al. 2003. Further delineation of Wittwer syndrome and refinement of the mapping region. *Am. J. Med. Genet. A.* 116: 57-60.
- Gerhard, D.S., et al. 2004. The status, quality, and expansion of the NIH full-length cDNA project: the Mammalian Gene Collection (MGC). *Genome Res.* 14: 2121-2127.

CHROMOSOMAL LOCATION

Genetic locus: HDHD1A (human) mapping to Xp22.31; Hdhd1a (mouse) mapping to 18 C.

SOURCE

GS1 (M-234) is a rabbit polyclonal antibody raised against amino acids 1-234 representing full length GS1 of mouse origin.

STORAGE

Store at 4° C, ****DO NOT FREEZE****. Stable for one year from the date of shipment. Non-hazardous. No MSDS required.

PROTOCOLS

See our web site at www.scbt.com or our catalog for detailed protocols and support products.

PRODUCT

Each vial contains 200 µg IgG in 1.0 ml of PBS with < 0.1% sodium azide and 0.1% gelatin.

APPLICATIONS

GS1 (M-234) is recommended for detection of GS1 of mouse, rat and, to a lesser extent, human origin by Western Blotting (starting dilution 1:200, dilution range 1:100-1:1000), immunoprecipitation [1-2 µg per 100-500 µg of total protein (1 ml of cell lysate)], immunofluorescence (starting dilution 1:50, dilution range 1:50-1:500) and solid phase ELISA (starting dilution 1:30, dilution range 1:30-1:3000).

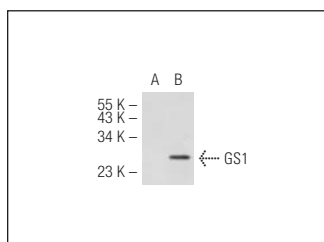
Suitable for use as control antibody for GS1 siRNA (h): sc-60768, GS1 siRNA (m): sc-60769, GS1 shRNA Plasmid (h): sc-60768-SH, GS1 shRNA Plasmid (m): sc-60769-SH, GS1 shRNA (h) Lentiviral Particles: sc-60768-V and GS1 shRNA (m) Lentiviral Particles: sc-60769-V.

Positive Controls: GS1 (h): 293T Lysate: sc-113475, SW-13 cell lysate: sc-24778 or rat testis extract: sc-2400.

RECOMMENDED SECONDARY REAGENTS

To ensure optimal results, the following support (secondary) reagents are recommended: 1) Western Blotting: use goat anti-rabbit IgG-HRP: sc-2004 (dilution range: 1:2000-1:100,000) or Cruz Marker™ compatible goat anti-rabbit IgG-HRP: sc-2030 (dilution range: 1:2000-1:5000), Cruz Marker™ Molecular Weight Standards: sc-2035, TBS Blotto A Blocking Reagent: sc-2333 and Western Blotting Luminol Reagent: sc-2048. 2) Immunoprecipitation: use Protein A/G PLUS-Agarose: sc-2003 (0.5 ml agarose/2.0 ml). 3) Immunofluorescence: use goat anti-rabbit IgG-FITC: sc-2012 (dilution range: 1:100-1:400) or goat anti-rabbit IgG-TR: sc-2780 (dilution range: 1:100-1:400) with UltraCruz™ Mounting Medium: sc-24941.

DATA



GS1 (M-234): sc-98461. Western blot analysis of GS1 expression in non-transfected: sc-117752 (A) and human GS1 transfected: sc-113475 (B) 293T whole cell lysates.

RESEARCH USE

For research use only, not for use in diagnostic procedures.